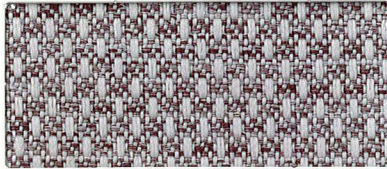
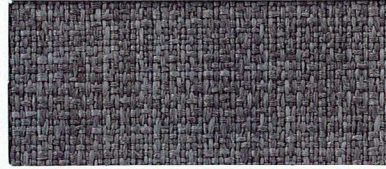


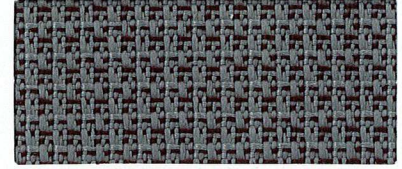
SPECTRUM COLLECTION



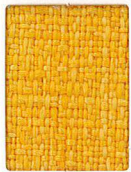
VARIANT
425-026 Aluminum



CONTINUUM
422-036 Iron



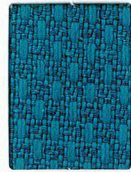
OPTIC
424-016 Coal



CONTINUUM
422-002 Saffron



CONTINUUM
422-001 Lipstick



VARIANT
425-014 Prussian



CONTINUUM
422-034 Turquoise



VARIANT
425-007 Biscuit



OPTIC
424-007 Mushroom



CONTINUUM
422-026 Dove



OPTIC
424-019 Tangerine



OPTIC
424-001 Red



CONTINUUM
422-024 Caribbean



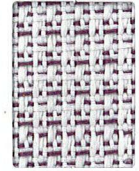
CONTINUUM
422-044 Ocean



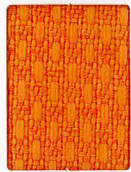
VARIANT
425-002 Mustard



CONTINUUM
422-027 Stone



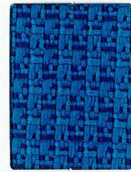
OPTIC
424-026 Elephant



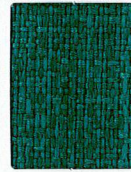
VARIANT
425-019 Orange Peel



VARIANT
425-001 Barn Red



OPTIC
424-024 Ocean



CONTINUUM
422-033 Pine



CONTINUUM
422-023 Citrine



CONTINUUM
422-007 Cafe Au Lait



VARIANT
425-016 Flint



CONTINUUM
422-009 Mandarin



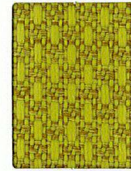
CONTINUUM
422-008 Beet



CONTINUUM
422-014 Electric



OPTIC
424-033 Myrtle



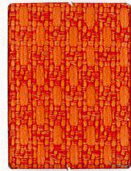
VARIANT
425-003 Palm



VARIANT
425-010 Cocoa



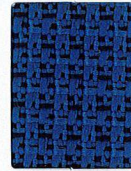
CONTINUUM
422-016 Charcoal



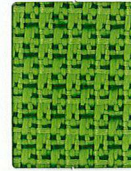
VARIANT
425-009 Persimmon



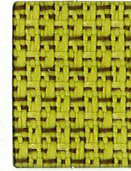
OPTIC
424-005 Mulberry



OPTIC
424-004 Yale



OPTIC
424-023 Springtime



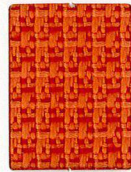
OPTIC
424-013 Green Apple



VARIANT
425-000 Chocolate



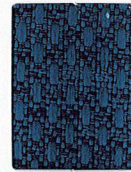
OPTIC
424-006 Ash



OPTIC
424-009 Sunrise



CONTINUUM
422-005 Magenta



VARIANT
425-004 Ink



CONTINUUM
422-013 Emerald



CONTINUUM
422-003 Spring



OPTIC
424-000 Brown Bear



VARIANT
425-006 Carbon



CONTINUUM
422-019 Brick



VARIANT
425-005 Aubergine



CONTINUUM
422-004 Indigo



CONTINUUM
422-043 Bottle



VARIANT
425-013 Jungle



CONTINUUM
422-000 Espresso



CONTINUUM
422-006 Onyx

TECHNICAL INFORMATION

Spectrum Collection

Pattern 54"	Content and Backing	Certifications	Weight/ Linear Yd.	Pattern Repeat	Finish	Abrasion Wyzenbeek	Light- Fastness	Flammability	Cleaning Code
CONTINUUM <i>Directional</i>	100% Post-Consumer Recycled Polyester Backing: Latex	GREENGUARD Gold	15 oz.	0.50" H, 0.59" V	Stain Repellent	130,000^ Double Rubs	40 hours	Cal. 117-2013 NFPA 260/UFAC Class 1 ASTM E84 (Unadhered) Class 1 or A	WS
OPTIC <i>Directional</i>	83% Post-Consumer Recycled Polyester 17% Polyester Backing: Latex	GREENGUARD Gold	16.5 oz.	0.33" H, 0.20" V	Stain Repellent	185,000^ Double Rubs	40 hours	Cal. 117-2013 NFPA 260/UFAC Class 1 ASTM E84 (Unadhered) Class 1 or A	WS
VARIANT <i>Directional</i>	75% Post-Consumer Recycled Polyester 25% Polyester Backing: Latex	GREENGUARD Gold	14.5 oz.	0.17" H, 0.20" V	Stain Repellent	140,000^ Double Rubs	40 hours	Cal. 117-2013 NFPA 260/UFAC Class 1 ASTM E84 (Unadhered) Class 1 or A	WS

REDUCED ENVIRONMENTAL IMPACT

These products are GREENGUARD Gold Certified for low chemical and particle emissions to UL standard UL 2818 and may contribute to LEED certification. For complete information visit mayerfabrics.com and UL.com/gg.

Continuum



CARE AND CLEANING INFORMATION

WS: Water/Solvent Cleaner

ADDITIONAL INFORMATION

CAL TB 133: All patterns may comply with California Technical Bulletin 133 when combined with appropriate components.

^Abrasion: Multiple factors affect fabric durability and appearance retention, including end-user application and proper maintenance. Wyzenbeek results above 100,000 double rubs have not been shown to be a reliable indicator of increased fabric lifespan.

Custom Capabilities: All patterns can be custom colored. Minimum yardage applies.

Specifications: Specifications are correct at the time of printing. Additional specifications are available on our website.



These fabrics meet or exceed these ACT performance guidelines.
Certification Marks owned by ACT



Water and Stain
Repellent Finish



This 100% polyester fabric is included in the Underwriter's Laboratory Fabric Recognition Program. Additional testing of this U.L. recognized component is not required on approved panels from participating manufacturers.

April 1, 2022



14815 Radburn Avenue
Santa Fe Springs, CA 90670

(562) 802-0464

customerservice@ocseating.com
ocseating.com

Pattern	Grade
Continuum	4
Optic	4
Variant	4



MAYERFABRICS

GSA Contract #GS-28F-0022P

SPECTRUMC1PCD 50317

† 317.267.2626 or 800.428.4415 # 317.267.2629 or 877.7SAMPLE

www.mayerfabrics.com
© 2017 Mayer-Paetz, Inc.