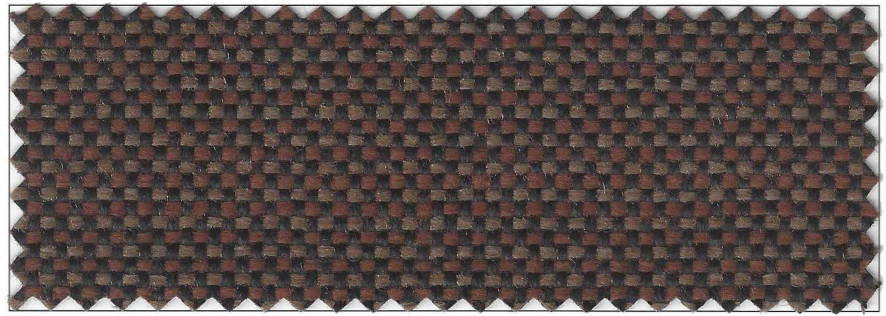
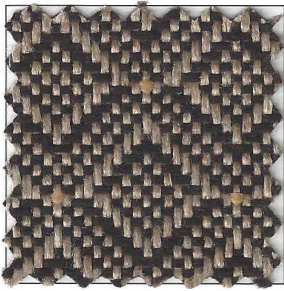


Alliance & Legacy



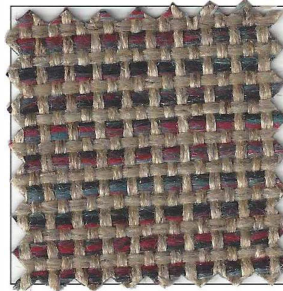
Alliance Earth



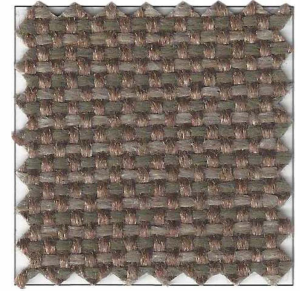
Legacy Alloy



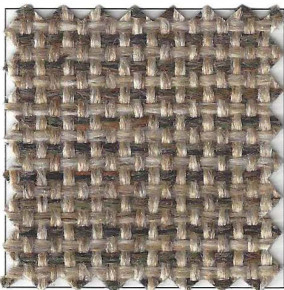
Legacy Ebony



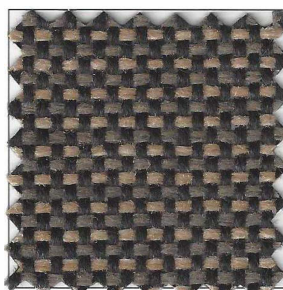
Alliance Stone



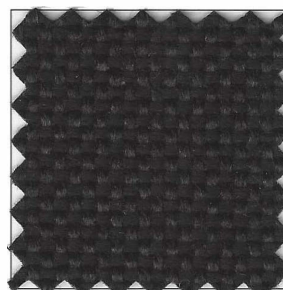
Alliance Smoke



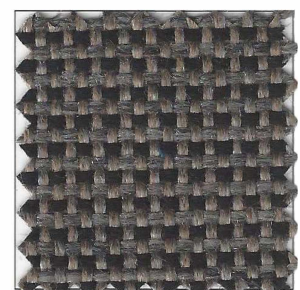
Alliance Thunder



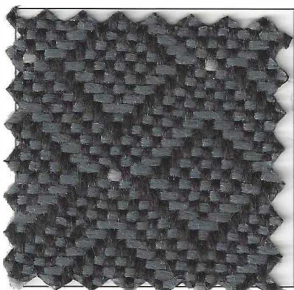
Alliance Flint



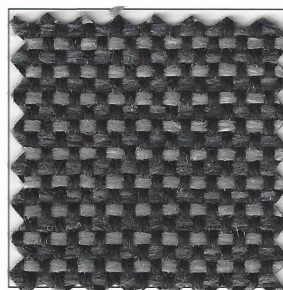
Alliance Black



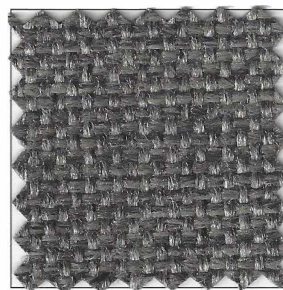
Alliance Charcoal



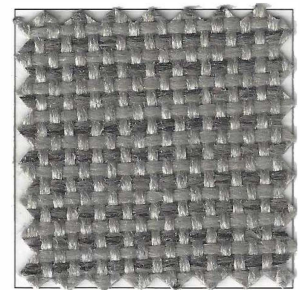
Legacy Steel



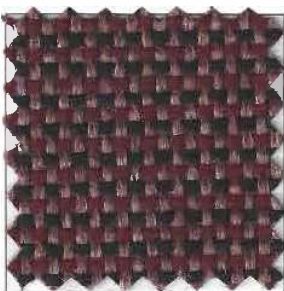
Alliance Eclipse



Alliance Pewter



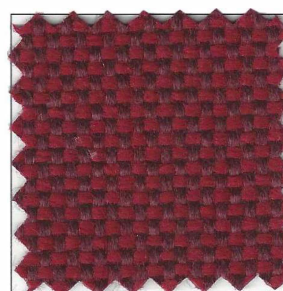
Alliance Titanium



Alliance Cherry



Alliance Ruby



Alliance Crimson



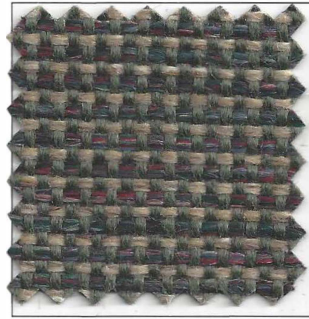
Alliance Cardinal



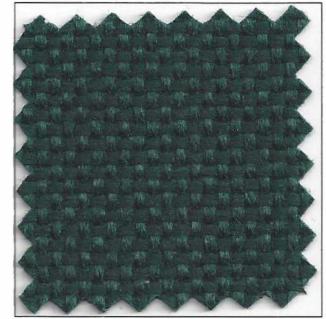
Legacy Amethyst



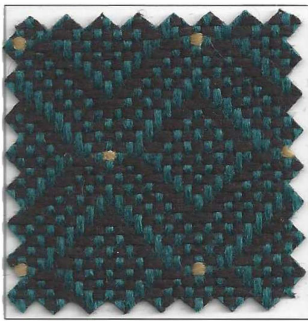
Alliance Current



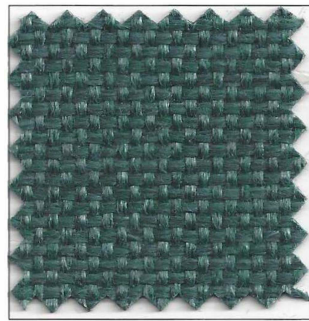
Alliance Oasis



Alliance Billiard



Legacy Peacock



Alliance Pine



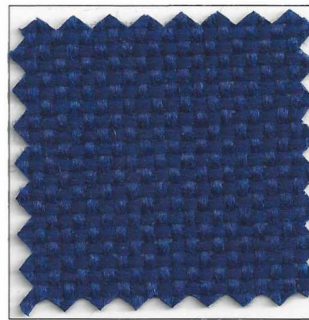
Alliance River



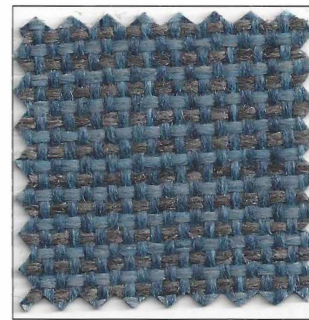
Legacy Midnight



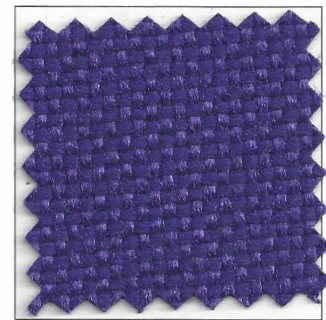
Alliance Admiral



Alliance Sapphire



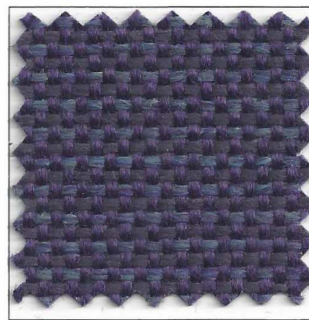
Alliance Cadet



Alliance Cosmo



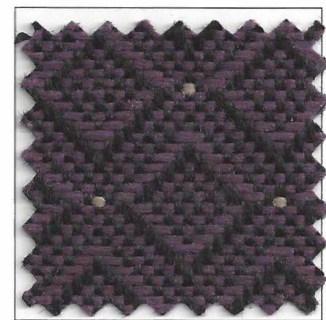
Alliance Navy



Alliance Marine



Alliance Grape



Legacy Purple

Alliance & Legacy

Fabric specifications

Pattern:	Alliance & Legacy
Fiber:	100% Polypropylene
Weight:	450g/yd-15.8 oz/yd
Width:	55" (140/142cm)
Back Coating:	Acrylic

This Quality meets the test requirements for the following end uses:

Tensile Strength ASTM D5035-2003	Warp: (lbf) 291.3 Wtft: (lbf) 313.8
Tearing Strength ASTM D1424-1996	Warp: (lbf) >14.1 Wtft: (lbf) >14.1
Seam Performance ASTM D434-1995	Warp: (lbf) 75.2 Wtft: (lbf) 71.4
Color Fastness to Light AATCC 16-2004	40 Fading Units Class 4.5 min
Color Fastness to Crocking AATCC 8-2004	Dry Crocking 4-5 Wet Crocking 4
Abrasion Resistance ASTM D 4966-1998	Heavy Duty 80000 Double rubs
Flame Resistant	For compliance with: California Technical Bulletin 117 Section E Part 1 Upholstery Fabrics
