



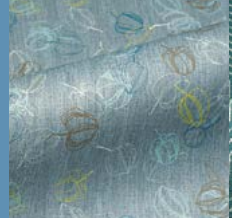
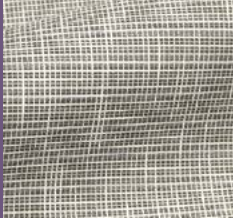
NOW

FABRIC OPTIONS



HPFi





» Index

Grade 1

- 3 Cross Check (30)
- 3 Dillon (32)
- 4 Dorset (21)
- 4 Expo (13)
- 5 Quattro (19)
- 5 Yosemite (11)

Grade 2

- 6 Fedora (25)
- 6 Foundation 10 (42)
- 7 Hathaway (19)
- 7 Linette (16)
- 8 Origin (47)
- 8 Punch Card (14)
- 9 Ridgecrest (12)
- 9 Utmost (9)

Grade 3

- 10 Bobby (7)
- 10 Castillo (16)
- 11 Chronicle (12)
- 11 City Park (9)
- 12 Engrave (21)
- 12 Graph (13)
- 13 Staple (29)
- 13 Sydney (12)
- 14 Tango (10)
- 14 Viceroy (17)

Grade 4

- 15 Blip (17)
- 15 Box Chain (17)
- 16 Gala (9)
- 16 Lara (58)
- 17 Moby (12)
- 17 Silverweave (37)

Grade 5

- 18 Cirque (14)
- 18 Cover Cloth (24)
- 19 Endurance EPU (36)
- 19 Evo CV (36)
- 20 Flanders (23)
- 20 Gatsby (25)
- 21 Jillian (7)
- 21 Lateral (9)
- 22 Lattice (10)
- 22 Midway (14)
- 23 Retrograde (9)
- 23 Route (12)

Grade 6

- 24 Criss Cross (22)
- 24 Haven (25)
- 25 Honeycomb Shag (8)
- 25 Hopsack (18)
- 26 Roadmap (8)
- 26 Row (30)
- 27 Scout (14)
- 27 Smart Soft (16)
- 28 Tribeca CV (20)
- 28 Vanguard CV (18)

Grade 7

- 29 Balance (13)
- 29 Graph (10)
- 30 Level (9)
- 30 Vector (9)

Grade 8

- 31 Fidget (8)
- 31 Kingsman (7)
- 32 Mixology CV (12)
- 32 Sanya CV (13)
- 33 Speakeasy CV (16)
- 33 Switchboard (9)

Grade 9

- 34 Centric (12)
- 34 Glimpse (8)
- 35 Silica (48)
- 35 Silica Leather (24)
- 36 Tangram (11)
- 36 Ultraleather Pro (41)

Grade 10

- 37 Fiberdrill (15)
- 37 Meteor (9)
- 38 Pod (9)
- 38 Power Grid (10)

Grade L

- 39 Classico (3)
- 39 Baroque (1)
- 39 Mammut (2)

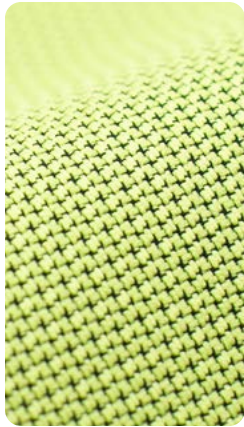


Look for this symbol for upholsteries best suited for healthcare applications.

To ensure color accuracy, please order a memo sample. More info at hpfi.com/NOW.

grade 1

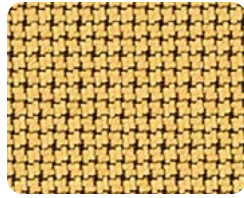
Cross Check • Additional Colors / Order Samples: mayerfabrics.com



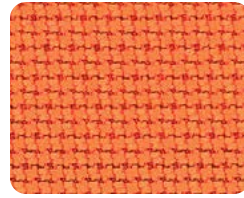
Lime



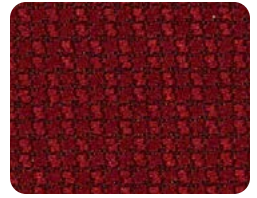
Evergreen



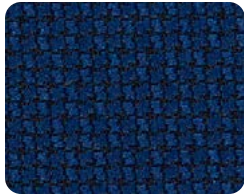
Sunshine



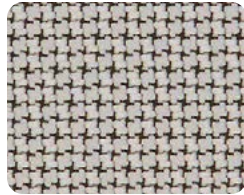
Paradise



Vermillion



Marine



Dove



Platinum



Slate Black

content: 100% Polyester
finish: Stain Repellent
repeat: Non-Matching
durability: 258,000 Double Rubs
seam slippage: 55 lbs. Warp / 59 lbs. Weft
flame retardance: UFAC/NFPA 260 Class 1, CAL 117-2013 Section 1
cleaning: S
GREENGUARD Certified®

MAYERFABRICS

customerservice@mayerfabrics.com | 800.428.4415

Dillon • Additional Colors / Order Samples: culpcontract.com



Apple Green



Sage



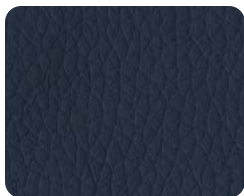
Straw



Fiesta



Lipstick



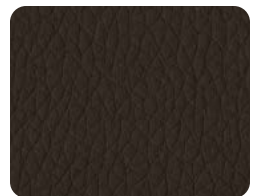
Ocean



Williamsburg



Quarry



Java



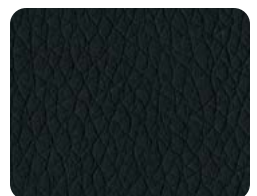
Steel



Lucid



Storm



Black

content: 100% Polyurethane
finish: Antimicrobial - Silver Ion Technology
repeat: Non-Matching
durability: 200,000 Double Rubs
seam strength: 92 lbs. Warp / 77 lbs. Weft
flame retardance: UFAC/NFPA 260 Class 1, CAL 117-2013 Section 1
cleaning: W (Bleach Cleanable 5:1)

CULP CONTRACT

contract@culp.com | 336.888.6274

To ensure color accuracy, please order a memo sample. More info at hpfi.com/NOW.

grade 1

Dorset • Additional Colors / Order Samples: culpcontract.com



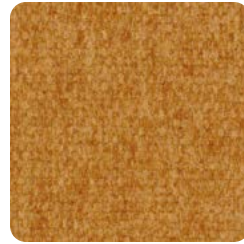
Avocado



Smoke Blue



Ocean Blue



Copper



Cayenne



Taupe



Platinum



Denim



Charcoal

content: 100% Polyester
finish: i-Clean™ Stain & Moisture Repellent
repeat: Non-Matching
durability: 55,000 Double Rubs
seam slippage: 41 lbs. Warp / 38 lbs. Weft
flame retardance: UFAC/NFPA 260 Class 1, CAL 117-2013 Section 1
cleaning: W

CULP CONTRACT

contract@culp.com | 336.888.6274

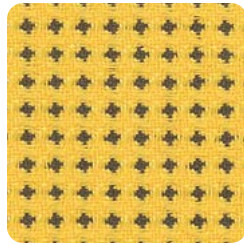
Expo • Additional Colors / Order Samples: momentumtextilesandwalls.com



Sprout



Leaf



Lemon



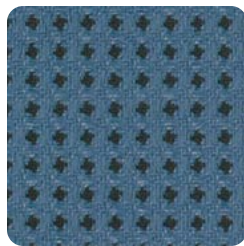
Zest



Festive



Oasis



Sky



Fog



Tuxedo

content: 65% Post Industrial Recycled Polyester,
 35% Post Consumer Recycled Polyester
repeat: .125" H, .125" V
durability: 102,000 Double Rubs
seam slippage: 29 lbs. Warp / 29 lbs. Weft
flame retardance: UFAC/NFPA 260 Class 1, CAL 117-2013 Section 1
cleaning: W S

Recycled Fiber Content; GREENGUARD Gold Certified, NSF 336 Compliant



MOMENTUM
TEXTILES & WALLCOVERING

customerservice@momtex.com | 800.366.6839

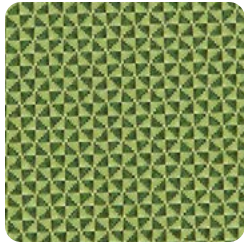
To ensure color accuracy, please order a memo sample. More info at hpfi.com/NOW.

grade **1**

Quattro • Additional Colors / Order Samples: mayerfabrics.com



Laguna



Spring Green



Skyway



Midnight Blue



Deep Crimson



Leaf



Chalk



Khaki



Granite

content: 100% Polyester
finish: Stain Repellent
repeat: Non-Matching
durability: 237,000 Double Rubs
seam slippage: 65 lbs. Warp / 91 lbs. Weft
flame retardance: UFAC/NFPA 260 Class 1, CAL 117-2013 Section 1
cleaning: S
GREENGUARD Certified®

MAYERFABRICS

customerservice@mayerfabrics.com | 800.428.4415

Yosemite  • Additional Colors / Order Samples: culpcontract.com



Parchment



Ash



Light Brown



Earth



Silt



Raven



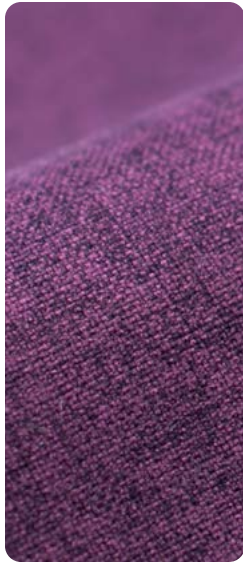
Oxblood

content: 100% Polyurethane with 70% Polyester,
 30% Cotton Backing
finish: Antimicrobial
repeat: Non-Matching
durability: 100,000 Double Rubs
seam strength: 61 lbs Warp / 68 lbs. Weft
flame retardance: UFAC/NFPA 260 Class 1, CAL 117-2013 Section 1
cleaning: W (Bleach Cleanable 5:1)

CULP CONTRACT

contract@culp.com | 336.888.6274

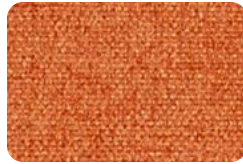
Fedora • Additional Colors / Order Samples: mayerfabrics.com



Plum



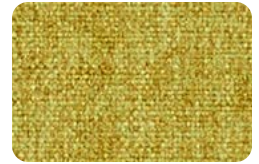
Ruby



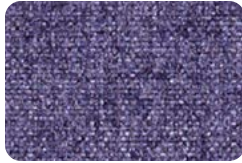
Tangelo



Topaz



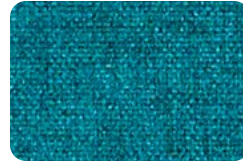
Citron



Purple



Indigo



Aegean



Aquamarine



Dew



Dapper



Charcoal



Bitumen

content: 100% Polyester
finish: Non-PFOA Stain Repellant
repeat: Non-Matching
durability: 100,000 Double Rubs
seam slippage: 106.1 lbs. Warp / 109.2 lbs. Weft
flame retardance: UFAC/NFPA 260 Class 1, CAL 117-2013 Section 1
cleaning: **W**
GREENGUARD Certified®

MAYERFABRICS

customerservice@mayerfabrics.com | 800.428.4415

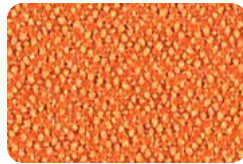
Foundation 10 • Additional Colors / Order Samples: mayerfabrics.com



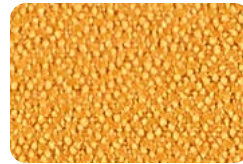
Concord



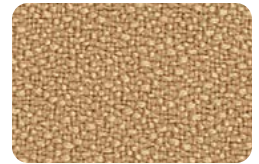
Flame



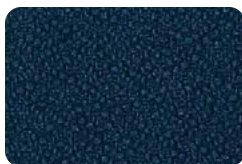
Marmalade



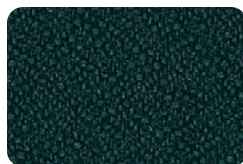
Ochre



Buckskin



Sapphire



Aegean



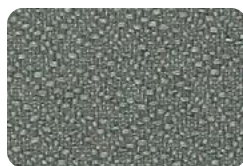
Ocean



Capri



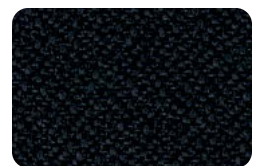
Blue Mist



Mercury



Graphite



Ebony

content: 65% Pre Consumer Recycled Polyester,
 35% Post Consumer Recycled Polyester
finish: Stain Repellant
repeat: Non-Matching
durability: 1,000,000 Double Rubs
seam slippage: 55 lbs. Warp / 52 lbs. Weft
flame retardance: UFAC/NFPA 260 Class 1, CAL 117-2013 Section 1
cleaning: **W S**
GREENGUARD Certified®

MAYERFABRICS

customerservice@mayerfabrics.com | 800.428.4415

To ensure color accuracy, please order a memo sample. More info at hpfi.com/NOW.

grade 2

Hathaway

• Additional Colors / Order Samples: culpcontract.com



Tangerine



Apple



Fire



Raspberry



Aqua



Ocean



Electric Blue



Cafe



Fog



Smokey

content: 100% Vinyl
finish: Antimicrobial
repeat: Non-Matching
durability: 100,000 Double Rubs
seam strength: 44 lbs. Warp / 53 lbs. Weft
flame retardance: UFAC/NFPA 260 Class 1, CAL 117-2013 Section 1
cleaning: **W** (Bleach Cleanable 5:1)

CULP CONTRACT

contract@culp.com | 336.888.6274

Linette

• Additional Colors / Order Samples: culpcontract.com



Mustard



Flame



Glaze



Toffee



Cola



Moss



Glacier



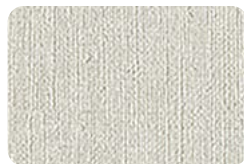
Waterscape



Denim



Peacock



Platinum



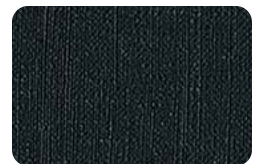
Ash



Stone



Steel



Black

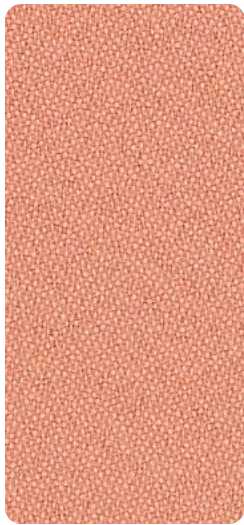
content: 100% Vinyl
finish: i-Clean™ Anti-Microbial
repeat: Non-Matching
durability: 100,000 Double Rubs
seam strength: 67 lbs. Warp / 69 lbs. Weft
flame retardance: UFAC/NFPA 260 Class 1, CAL 117-2013 Section 1
cleaning: **W** (Bleach Cleanable 5:1)

CULP CONTRACT

contract@culp.com | 336.888.6274

To ensure color accuracy, please order a memo sample. More info at hpi.com/NOW.

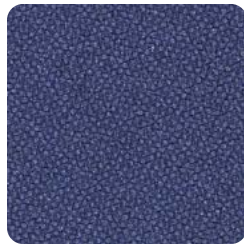
Origin • Additional Colors / Order Samples: momentumtextilesandwalls.com



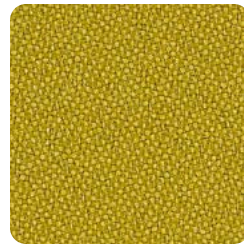
Blush



Tide



Marina



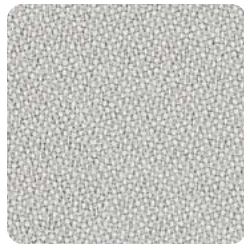
Spritz



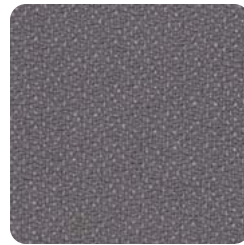
Fez



Seed



Alloy



Iron



Jet

content: 100% Post Consumer Recycled Polyester
finish: Soil & Stain Resistant
repeat: Non-Matching
durability: 282,000 Double Rubs
seam slippage: 88 lbs. Warp / 79 lbs. Weft
flame retardance: UFAC/NFPA 260 Class 1, CAL 117-2013 Section 1
cleaning: **W S**
 Reduced Environmental Impact;
 GREENGUARD Gold Certified®, NSF 336 Compliant



MOMENTUM
 TEXTILES & WALLCOVERING

customerservice@momtex.com | 800.366.6839

Punch Card • Additional Colors / Order Samples: culpcontract.com



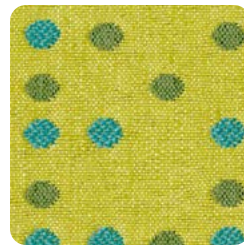
Shale



Atlantic



Blue Jay



Citronelle



Red



Dark Taupe



Halo



Gray



Earth

content: 61% Polyester, 39% Repreve® Recycled Polyester
repeat: 7.5" H, 11"V
durability: 40,000 Double Rubs
seam slippage: 40 lbs. Warp / 55 lbs. Weft
flame retardance: UFAC/NFPA 260 Class 1, CAL 117-2013 Section 1
cleaning: **W**

CULP CONTRACT

contract@culp.com | 336.888.6274

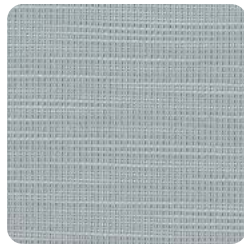
Ridgecrest • Additional Colors / Order Samples: culpcontract.com



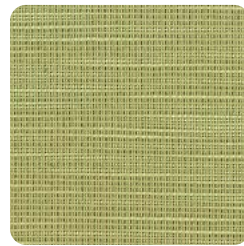
Bittersweet



Midnight



Tide Pool



Meadow



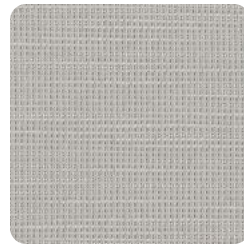
Ruby



Beach



Mink



Sterling



Ink

content: 100% Polyester
repeat: Non-Matching
durability: 100,000 Double Rubs
seam slippage: 88 lbs. Warp / 84 lbs. Weft
flame retardance: UFAC/NFPA 260 Class 1, CAL 117-2013 Section 1
cleaning: **W**

CULP CONTRACT

contract@culp.com | 336.888.6274

Utmost • Order Samples: culpcontract.com



Starfish



Night



Tropical



Clover



Plum



Natural



Fleece



Meteor



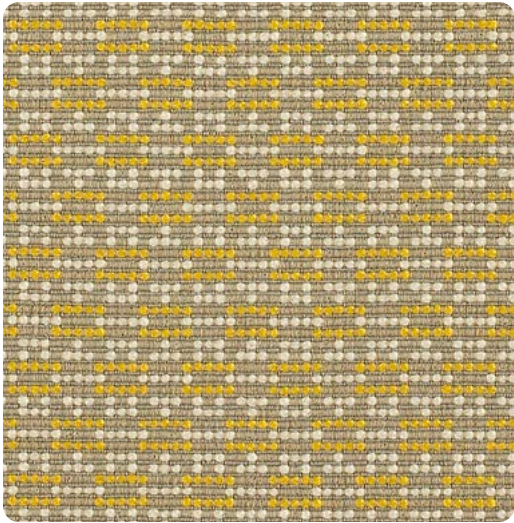
Iron

content: 30% Repreve Recycled Polyester, 70% Polyester
finish: i-Clean™ Stain & Moisture Repellent
repeat: 1" H, 1.25" V
durability: 95,000 Double Rubs
seam strength: 53 lbs. Warp / 56 lbs. Weft
flame retardance: UFAC/NFPA 260 Class 1, CAL 117-2013 Section 1
cleaning: **W**

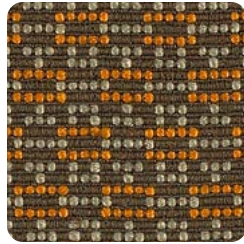
CULP CONTRACT

contract@culp.com | 336.888.6274

Bobby • Order Samples: momentumtextilesandwalls.com



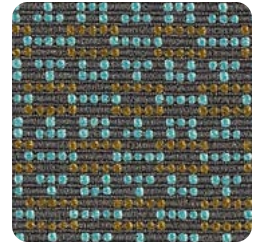
Lemon



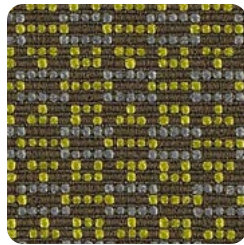
Glow



Fuchsia



Aqua



Moss



Anchor



Iris

content: 68% Repreve Post Consumer Recycled Polyester, 32% Polyester
repeat: 0.5" H, 0.875" V
durability: 150,000 Double Rubs
seam slippage: 64.7 lbs. Warp / 46.7 lbs. Weft
flame retardance: UFAC/NFPA 260 Class 1, CAL 117-2013 Section 1
cleaning: **W S**
 Recycled Fiber Content; GREENGUARD Gold Certified®; NSF 336 Compliant



MOMENTUM
 TEXTILES & WALLCOVERING

customerservice@momtex.com | 800.366.6839

Castillo  • Additional Colors / Order Samples: culpcontract.com



Quarry



Clementine



Red



Breezy



Honeydew



Java



Batik

content: 100% Polyurethane with 87% Polyester, 13% cotton backing
finish: i-Clean™ Stain & Moisture Repellent
repeat: Non-Matching
durability: 200,000 Double Rubs
seam slippage: 31 lbs. Warp / 58 lbs. Weft
flame retardance: UFAC/NFPA 260 Class 1, CAL 117-2013 Section 1
cleaning: **W** (Bleach Cleanable 5:1)

CULP CONTRACT

contract@culp.com | 336.888.6274

To ensure color accuracy, please order a memo sample. More info at hpfi.com/NOW.

Chronicle • Additional Colors / Order Samples: culpcontract.com



Goldenrod



Cypress



Jade



Persimmon



Merlot



Wheat



Granite



Charcoal



Navy

content: 100% Polyester
finish: i-Clean™ Stain & Moisture Repellent
repeat: Non-Matching
durability: 95,000 Double Rubs
seam slippage: 100 lbs. Warp / 95 lbs. Weft
flame retardance: UFAC/NFPA 260 Class 1, CAL 117-2013 Section 1
cleaning: **W**

CULP CONTRACT

contract@culp.com | 336.888.6274

City Park • Order Samples: culpcontract.com • Pattern Scale Shown at 25%



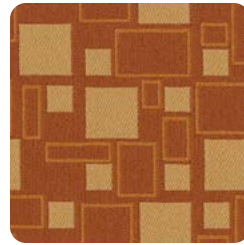
Birch Bark



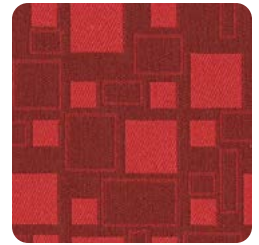
Kiwi



Blue Moon



Marigold



Tomato



Cork



Walnut



Steely Gray



Domino

content: 100% Polyester
repeat: 7.25" H, 7" V
durability: 50,000 Double Rubs
seam slippage: 44 lbs. Warp / 61 lbs. Weft
flame retardance: UFAC/NFPA 260 Class 1, CAL 117-2013 Section 1
cleaning: **W**

CULP CONTRACT

contract@culp.com | 336.888.6274

Engrave • Additional Colors / Order Samples: mayerfabrics.com



Apple



Chalk



Canyon



Pumpkin



Scarlet



Admiral



Indigo



Silver



Pewter

content: 100% Polyester
finish: Nanotex®
repeat: Non-Matching
durability: 100,000 Double Rubs
seam strength: 49 lbs. Warp / 46 lbs. Weft
flame retardance: UFAC/NFPA 260 Class 1, CAL 117-2013 Section 1
cleaning: **W**
GREENGUARD Certified®

MAYERFABRICS

customerservice@mayerfabrics.com | 800.428.4415

Graph • Additional Colors / Order Samples: momentumtextilesandwalls.com



Parrot



Wave



Cork



Ruby



Alpine



Chalice



Coal

content: 75% Repreve Post Consumer Recycled Polyester, 25% Polyester
finish: Non-Matching
repeat: 7.5" l x 3.375" w
durability: 170,000 Double Rubs
seam slippage: 100.7 lbs. Warp / 89.9 lbs. Weft
flame retardance: UFAC/NFPA 260 Class 1, CAL 117-2013 Section 1
cleaning: **W S**
Recycled Fiber Content; GREENGUARD Gold Certified®



MOMENTUM
 TEXTILES & WALLCOVERING

customerservice@momtex.com | 800.366.6839

To ensure color accuracy, please order a memo sample. More info at hpfi.com/NOW.

grade 3

Staple • Additional Colors / Order Samples: cfstinson.com



Paprika



Camel



Mist



Twilight



Voyage



Malt



Smith



Academy



Nautical

content: 100% Polyurethane (polycarbonate & Polyester resins, Polyester, cotton backing)
finish: enhanced soil and stain resistance
durability: 200,000 Double Rubs
seam strength: 61 lbs. Warp / 81 lbs. Weft
flame retardance: UFAC/NFPA 260 Class 1, CAL 117-2013 Section 1
cleaning: **W S** (Bleach Cleanable 4:1)
 Reduced Environmental Impact

Stinson®

customerrelations@cfstinson.com | 800.841.6279

Sydney • Additional Colors / Order Samples: mayerfabrics.com • Pattern Scale Shown at 50%



Crimson



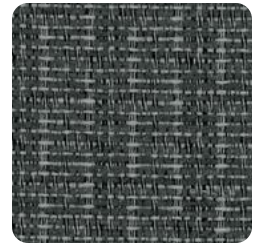
Butterscotch



Silver



Taupe



Iron



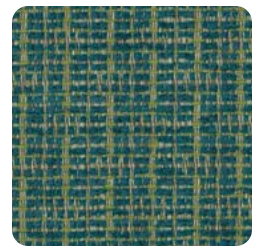
Tangerine



Leaf



Ocean



Pine

content: 18% post consumer, 34% pre-consumer Recycled Polyester, 48% Polyester
finish: PFOA & PFOS-free nano stain repellent
repeat: .938" l x .842" w
durability: 63,000 Double Rubs
seam slippage: 31 lbs. Warp / 46 lbs. Weft
flame retardance: UFAC/NFPA 260 Class 1, CAL 117-2013 Section 1
cleaning: **W S** (Bleach Cleanable 9:1)

MAYERFABRICS

customerservice@mayerfabrics.com | 800.428.4415

To ensure color accuracy, please order a memo sample. More info at hpf.com/NOW.

grade **3**

Tango • Additional Colors / Order Samples: mayerfabrics.com • Pattern Scale Shown at 50%



Sangria



Flint



Sunrise



Raspberry



Coral



Surfside



Limeade



Skyline




Harbor

content: 100% Polyester
finish: PFOA & PFOS-free stain repellent
repeat: 4.8" l x 4.8" w
durability: 80,000 Double Rubs
seam slippage: 96 lbs. Warp / 84 lbs. Weft
flame retardance: UFAC/NFPA 260 Class 1, CAL 117-2013 Section 1
cleaning: S
GREENGUARD Gold Certified®

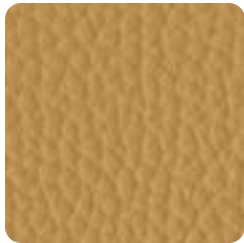
MAYERFABRICS

customerservice@mayerfabrics.com | 800.428.4415

Viceroy  • Additional Colors / Order Samples: culpcontract.com



Bravado



Gold



Winter



Mushroom



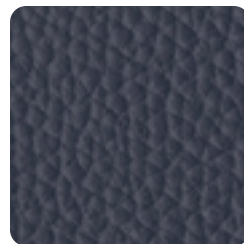
Charcoal



Bordeaux



Peacock



Ocean



Spruce

content: 100% Polyurethane (Polycarbonate), Polyester Backing)
finish: Antimicrobial
repeat: Non-Matching
durability: 200,000 Double Rubs
seam slippage: 42 lbs. Warp / 71 lbs. Weft
flame retardance: UFAC/NFPA 260 Class 1, CAL 117-2013 Section 1
cleaning: W S

CULP CONTRACT

contract@culp.com | 336.888.6274

To ensure color accuracy, please order a memo sample. More info at hpfi.com/NOW.

grade 4

Blip • Additional Colors / Order Samples: cfstinson.com



Maui



Gecko



Grasshopper



Pumpkin



Red Hot



Marble



Quarry



Pebble



Ore

content: 70% Polyester, 20% Eco-Intelligent Polyester, 6% Pre-Consumer, 4% Post-Consumer Recycled Polyester

finish: Non-PFOA Stain Resistant

repeat: Non-Matching

durability: 100,000 Double Rubs

seam strength: 110.7 lbs. Warp / 58.2 lbs. Weft

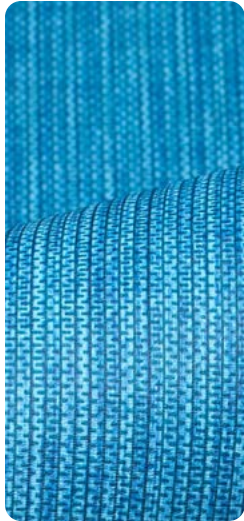
flame retardance: UFAC/NFPA 260 Class 1, CAL 117-2013 Section 1

cleaning: **W S**
GREENGUARD Certified®

Stinson®

customerrelations@cfstinson.com | 800.841.6279

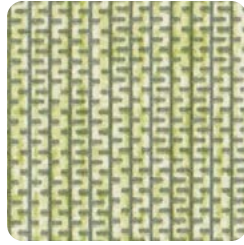
Box Chain • Additional Colors / Order Samples: cfstinson.com



Amalfi



Evergreen



Pomelo



Stucco



Rose



Frost



Antelope



Stardust



Beluga

content: Vinyl Surface with Polyester Backing

finish: Advanced Soil and Stain Resistant Top Coat

repeat: Non-Matching

durability: 100,000 Double Rubs

seam strength: 46 lbs. Warp / 35 lbs. Weft

flame retardance: UFAC/NFPA 260 Class 1, CAL 117-2013 Section 1

cleaning: **W** (Bleach Cleanable 9:1)
GREENGUARD Certified®

Stinson®

customerrelations@cfstinson.com | 800.841.6279

To ensure color accuracy, please order a memo sample. More info at hpf.com/NOW.

grade 4

Gala • Order Samples: mayerfabrics.com • Pattern Scale Shown at 50%



Quartz



Limelight



Honeycomb



Skipper



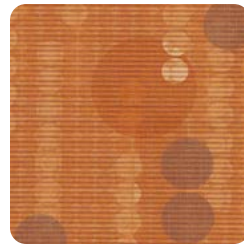
Aquamarine



Bronze



Spice



Sunset



Truffle

content: Vinyl with Urethane Top Coat
finish: SILVERGUARD® and PERMABLOK®
repeat: 18.0" H, 18.0" V
durability: 100,000 Double Rubs
seam strength: 109 lbs. Warp / 72 lbs. Weft
flame retardance: UFAC/NFPA 260 Class 1, CAL 117-2013 Section 1
cleaning: **W S CFC** (Bleach Cleanable 4:1)

MAYERFABRICS

customerservice@mayerfabrics.com | 800.428.4415

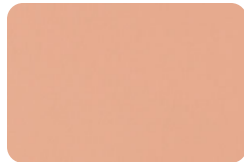
Lara • Additional Colors / Order Samples: cfstinson.com



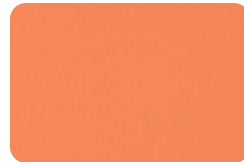
Haze



Buttercup



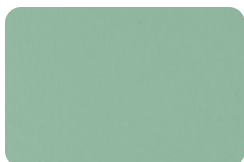
Blush



Marmalade



Tamale



Hydro



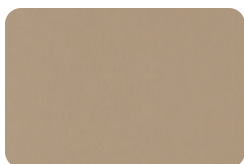
Sherwood



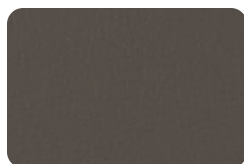
Tranquil



Patriot



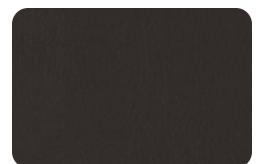
Stone



Tempest



Kitten



Pitch

content: Non-Phthalate Vinyl Surface with Polyester Backing
finish: Advanced Soil and Stain Resistant Top Coat
repeat: Non-Matching / Directional
durability: Exceeds 1,300,000 Double Rubs
seam slippage: 35 lbs. Warp / 30 lbs. Weft
flame retardance: UFAC/NFPA 260 Class 1, CAL 117-2013 Section 1
cleaning: **W** (Bleach Cleanable 9:1)
GREENGUARD Certified®

Stinson®

customerrelations@cfstinson.com | 800.841.6279

To ensure color accuracy, please order a memo sample. More info at hpfi.com/NOW.

grade 4

Moby • Additional Colors / Order Samples: cfstinson.com



Lichen



Poppy



Cardinal



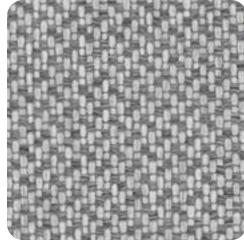
Surf



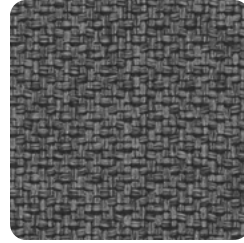
Stream



Cloud



Gull



Vesper



Black

content: 100% Polyester
finish: Non-PFOA Stain Resistant
repeat: Non-Matching
durability: 100,000 Double Rubs
seam strength: 87.2 lbs. Warp / 68.5 lbs. Weft
flame retardance: UFAC/NFPA 260 Class 1, CAL 117-2013 Section 1
cleaning: **W**
GREENGUARD Gold Certified®

Stinson®

customerrelations@cfstinson.com | 800.841.6279

Silverweave • Additional Colors / Order Samples: mayerfabrics.com



Daylily



Bittersweet



Tangerine



Eggplant



Lime



Jade



Cyan



Cadet



Calypso



Cobalt



Indigo



Doe



Cliff



Zinc



Moss



Graphite

content: Vinyl with Urethane Top Coat
finish: Soil & Stain Resistant Top Coat
repeat: Non-Matching
durability: 100,000 Double Rubs
seam strength: 46 lbs. Warp / 35 lbs. Weft
flame retardance: UFAC/NFPA 260 Class 1, CAL 117-2013 Section 1
cleaning: **CFC BC** (Bleach Cleanable 9:1)

MAYERFABRICS

customerservice@mayerfabrics.com | 800.428.4415

Cirque

• Additional Colors / Order Samples: mayerfabrics.com • Pattern Scale Shown at 50%



Avocado



Dusk



Amber



Brownstone



Firecracker



Aqua



Regatta

content: Vinyl Face with Polyester Backing
finish: SILVERGUARD®, PBG+™ (PERMABLOCK³® & PERMAGUARD®)
repeat: 18" H, 18" V
durability: 100,000 Double Rubs
seam strength: 21 lbs. Warp / 16 lbs. Weft
flame retardance: UFAC/NFPA 260 class 1, CAL 117-2013 Section 1
cleaning: **W S** (Bleach Cleanable 9:1)

MAYERFABRICS

customerservice@mayerfabrics.com | 800.428.4415

Cover Cloth

• Additional Colors / Order Samples: momentumtextilesandwalls.com



Sorrel



Platinum



Antique



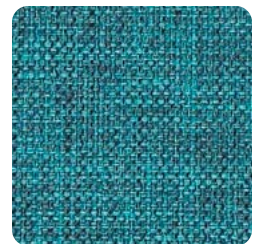
Vesper



Zest



Taupe



Cyan

content: 56% Repreve® Post Consumer Recycled Polyester, 44% Polyester
finish: Crypton Green®
repeat: Non-Matching
durability: 200,000 Double Rubs
seam slippage: 71 lbs. Warp / 49 lbs. Weft
flame retardance: UFAC/NFPA 260 class 1, CAL 117-2013 Section 1
cleaning: **W** (Bleach Cleanable 9:1)
Recycled Fiber Content; GREENGUARD Gold Certified®

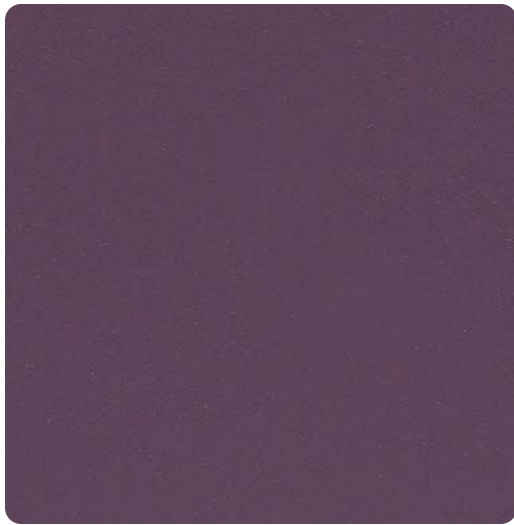


MOMENTUM TEXTILES & WALLCOVERING

customerservice@momtex.com | 800.366.6839

To ensure color accuracy, please order a memo sample. More info at hpfi.com/NOW.

Endurance EPU • Additional Colors / Order Samples: momentumtextilesandwalls.com



Plum



Claret



Chai



Smith



Bluebell



Nordic



Noir

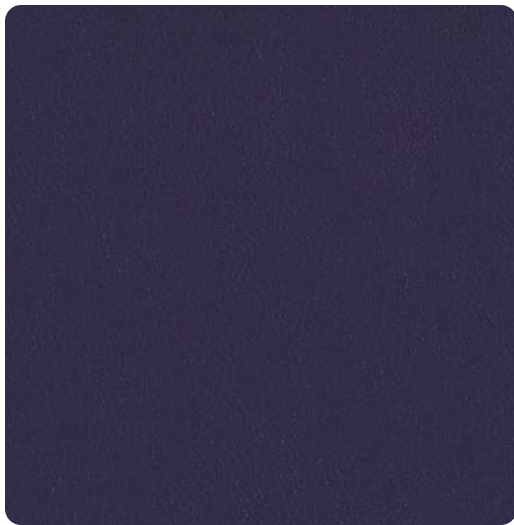
content: 100% EPU Polyurethane
finish: Anti-Microbial, Anti-Bacterial
repeat: Non-Matching
durability: 1,000,000 Double Rubs
seam strength: 100 lbs. Warp / 95.4 lbs. Weft
flame retardance: UFAC/NFPA 260 Class 1, CAL 117-2013 Section 1
cleaning: **W** (Bleach Cleanable 4:1)
 Reduced Environmental Impact; GREENGUARD Certified® PVC Free



MOMENTUM
TEXTILES & WALLCOVERING

customerservice@momtex.com | 800.366.6839

Evo CV • Additional Colors / Order Samples: momentumtextilesandwalls.com



Regal



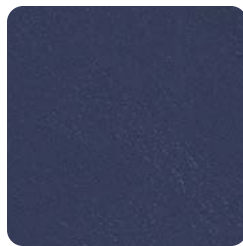
Scarlet



Nubuck



Aqua



Bluestar



Mist



Jetty

content: 100% Clean Vinyl / Phthalate Free
finish: Protective Topcoat
repeat: Non-Matching
durability: 1,000,000 Double Rubs
seam strength: 80.1 lbs. Warp / 68 lbs. Weft
flame retardance: UFAC/NFPA 260 Class 1, CAL 117-2013 Section 1
cleaning: **W S** (Bleach Cleanable 10:1)
 GREENGUARD Certified®



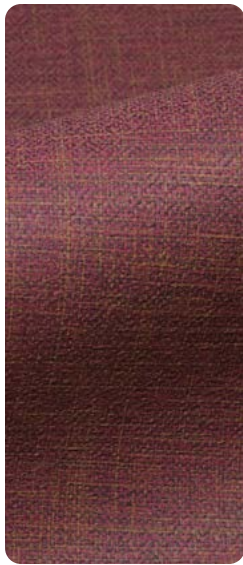
MOMENTUM
TEXTILES & WALLCOVERING

customerservice@momtex.com | 800.366.6839

To ensure color accuracy, please order a memo sample. More info at hpf.com/NOW.

grade **5**

Flanders • Additional Colors / Order Samples: cfstinson.com



Sugar Beet



Salsa



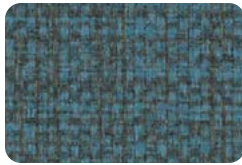
Rum



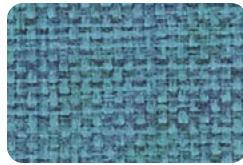
Ginger



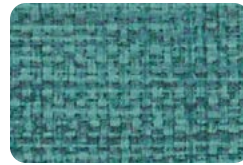
Gecko



Voyage



Bermuda



Polynesia



Seaside



Fossil



Tiki



Slate



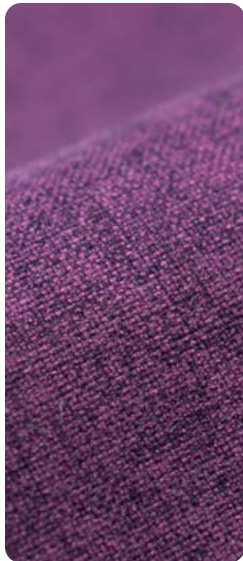
Charcoal

content: 100% Vinyl with Polyester Backing
finish: Advanced Soil & Stain Resistant Top Coat
repeat: Non-Matching
durability: 250,000 Double Rubs
seam slippage: 58.5 lbs. Warp / 46.2 lbs. Weft
flame retardance: UFAC/NFPA 260 Class 1, CAL 117-2013 Section 1
cleaning: **W S** (Bleach Cleanable 9:1)
GREENGUARD Certified®

Stinson®

customerrelations@cfstinson.com | 800.841.6279

Gatsby  • Additional Colors / Order Samples: mayerfabrics.com



Plum



Ruby



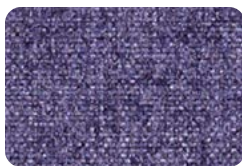
Tangelo



Topaz



Citron



Purple



Indigo



Aegean



Aquamarine



Dew



Dapper



Charcoal



Bitumen

content: 100% Polyester
finish: Crypton® with antimicrobial Silver Ion technology
durability: 100,000 Double Rubs
seam strength: 117.5 lbs. Warp / 119.3 lbs. Weft
flame retardance: UFAC/NFPA 260 class 1, CAL 117-2013 Section 1
cleaning: **W S** (Bleach Cleanable 9:1)
GREENGUARD Certified®

MAYERFABRICS

customerservice@mayerfabrics.com | 800.428.4415

To ensure color accuracy, please order a memo sample. More info at hpfi.com/NOW.

grade **5**

Jillian  • Order Samples: cfstinson.com • Pattern Scale Shown at 50%



Skyscraper



Carribean



Lido



Swizzle



Fireball



Vibrant




Jet Set

content: 65% Post-Consumer Recycled Polyester, 35% Polyester
finish: GreenShield® Nano-Particle Based Soil & Stain Protection
repeat: 0.0" H, 10" V
durability: 120,000 Double Rubs
seam strength: 76.5 lbs. Warp / 38 lbs. Weft
flame retardance: UFAC/NFPA 260 Class 1, CAL 117-2013 Section 1
cleaning: **W S** (Bleach Cleanable 9:1)
GREENGUARD Gold Certified®

Stinson®

customerrelations@cfstinson.com | 800.841.6279

Lateral  • Order Samples: cfstinson.com • Pattern Scale Shown at 50%



Mist



Sangria



Papaya



Calypso



Citrine



Horizon



Sterling



Peppercorn



Skyline

content: 65% Post-Consumer Recycled Polyester, 35% Polyester
finish: GreenShield® Nano-Particle Based Soil & Stain Protection
repeat: 0.0" H, 4.375" V
durability: 120,000 Double Rubs
seam strength: 76.5 lbs. Warp / 38 lbs. Weft
flame retardance: UFAC/NFPA 260 Class 1, CAL 117-2013 Section 1
cleaning: **W S** (Bleach Cleanable 9:1)
GREENGUARD Certified®

Stinson®

customerrelations@cfstinson.com | 800.841.6279

To ensure color accuracy, please order a memo sample. More info at hpfi.com/NOW.

grade 5

Lattice • Order Samples: cfstinson.com • Pattern Scale Shown at 50%



Sage



Goldfinch



Buckwheat



Rosewood



Clay



Fresco



Grove



Metro



Bayou



Skipper

content:
finish:
repeat:
durability:
seam strength:
flame retardance:
cleaning:

Non-Phthalate Vinyl Surface with Polyester Backing
Advanced Soil and Stain Resistant Top Coat
18" H x 18" V, Non-Matching / Directional
Exceeds 1,300,000 Double Rubs
35 lbs. Warp / 30 lbs. Weft
UFAC/NFPA 260 Class 1, CAL 117-2013 Section 1
W (Bleach Cleanable 9:1)
GREENGUARD Certified

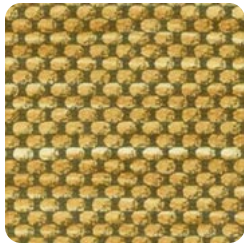
Stinson®

customerrelations@cfstinson.com | 800.841.6279

Midway • Additional Colors / Order Samples: mayerfabrics.com



Algae



Sunshine



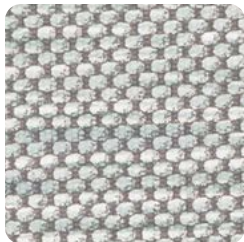
Wheat



Spa



Persimmon



Haze



Stone



Indigo




Storm

content:
finish:
repeat:
durability:
seam strength:
flame retardance:
cleaning:

80% Phthalate-Free Vinyl Facing,
20% Polyester Backing
Soil & Stain Resistant Top Coat with Ink-Resistance
18" H, 18" V
1,300,000 Double Rubs
35 lbs. Warp / 30 lbs. Weft
UFAC/NFPA 260 class 1, CAL 117-2013 Section 1
W CFC (Bleach Cleanable 4:1)
GREENGUARD Certified®

MAYERFABRICS

customerservice@mayerfabrics.com | 800.428.4415

Retrograde  • Order Samples: cfstinson.com • Pattern Scale Shown at 50%



Electric



Sunrise



Riverside



Coastal



Lava



Castlerock



Aquamarine



Mercury




Eclipse

content: 97% Polyester, 2% Pre-Consumer Recycled Polyester, 1% Post-Consumer Recycled Polyester
finish: Enhanced Soil & Stain Resistance
repeat: 7.375" H, 10.75" V
durability: 54,000 Double Rubs
seam slippage: 56 lbs. Warp / 66 lbs. Weft
flame retardance: UFAC/NFPA 260 Class 1, CAL 117-2013 Section 1
cleaning: **W S** (Bleach Cleanable 9:1)
GREENGUARD Certified®

Stinson®

customerrelations@cfstinson.com | 800.841.6279

Route  • Additional Colors / Order Samples: cfstinson.com • Pattern Scale Shown at 25%



Stone



Ice



Chamois



Seaside



Meadow



Jasper



Deep Sea



Earth



Blackberry

content: Vinyl Surface with Polyester Backing
finish: Enhanced Soil & Stain Resistance
repeat: 8.75" H, 25" V
durability: 1,300,000 Double Rubs
seam slippage: 35 lbs. Warp / 30 lbs. Weft
flame retardance: UFAC/NFPA 260 Class 1, CAL 117-2013 Section 1
cleaning: **W** (Bleach Cleanable 9:1)
GREENGUARD Certified®

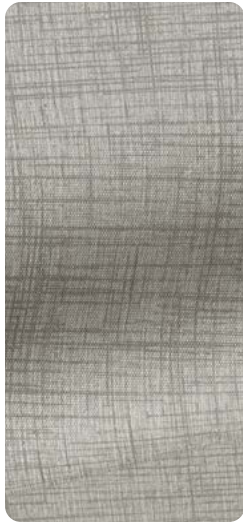
Stinson®

customerrelations@cfstinson.com | 800.841.6279

Criss Cross 2.0



• Additional Colors / Order Samples: cfstinson.com • Pattern Scale Shown at 50%



Graystone



Stucco



Desert



Orange



Brick



Navy



Leaf



Mineral



Abyss

content:
finish:
repeat:
durability:
seam strength:
flame retardance:
cleaning:

Non-Phthalate Vinyl Surface with Polyester Backing
Advanced Soil and Stain Resistant Top Coat
Non-Matching / Directional
Exceeds 500,000 Double Rubs
60 lbs. Warp / 40 lbs. Weft
UFAC/NFPA 260 Class 1, CAL 117-2013 Section 1
W S (Bleach Cleanable 9:1)
GREENGUARD Certified®

Stinson®

customerrelations@cfstinson.com | 800.841.6279

Haven



• Additional Colors / Order Samples: mayerfabrics.com



Shale



Cocoon



Butterscotch



Coral



Ruby



Ocean



Seafoam



Grey



Raven


content:
finish:
repeat:
durability:
seam strength:
flame retardance:
cleaning:

92% Polyester, 6% Polyurethane, 2% Silicone
Supreen (Silicone) PFC/PFOA-Free
3.625" H, 4.375" V
100,000 Double Rubs
87.5 lbs. Warp / 99.5 lbs. Weft
UFAC/NFPA 260 Class 1, CAL 117-2013 Section 1
W S BC (Bleach Cleanable 9:1)
GREENGUARD Gold Certified®

MAYERFABRICS

customerservice@mayerfabrics.com | 800.428.4415

To ensure color accuracy, please order a memo sample. More info at hpfi.com/NOW.

Honeycomb Shag  • Order Samples: cfstinson.com • Pattern Scale Shown at 25%



Iconic



Sunstone



Papaya



Salsa



Teal



Champion



Tint




Shale

content: 63% Polyester, 37% Olefin
finish: Non-PFOA Stain Resistant
repeat: 14.5" H, 15.75" V
durability: 81,000 Double Rubs
seam slippage: 96 lbs. Warp / 71 lbs. Weft
flame retardance: UFAC/NFPA 260 Class 1, CAL 117-2013 Section 1
cleaning: **W S** (Bleach Cleanable 9:1)
GREENGUARD Gold Certified®

Stinson®

customerrelations@cfstinson.com | 800.841.6279

Hopsack  • Additional Colors / Order Samples: cfstinson.com



Twine



Stucco



Koi



Cedar



Alloy



Earth



Fjord



Shadow



Carbon

content: 100% Vinyl Face with 100% Polyester Backing
finish: Advanced Soil & Stain Resistant Top Coat
repeat: Non-Matching
durability: 100,000 Double Rubs
seam slippage: 46 lbs. Warp / 35 lbs. Weft
flame retardance: UFAC/NFPA 260 Class 1, CAL 117-2013 Section 1
cleaning: **W** (Bleach Cleanable 9:1)
GREENGUARD Certified®

Stinson®

customerrelations@cfstinson.com | 800.841.6279

To ensure color accuracy, please order a memo sample. More info at hpf.com/NOW.

grade 6

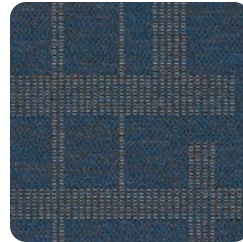
Roadmap • Order Samples: cfstinson.com • Pattern Scale Shown at 25%



Wave



Haze



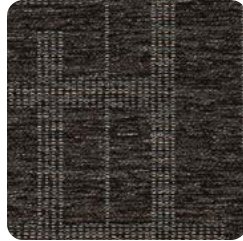
Smart



Mambo



Sketch



Gotham



Tropic



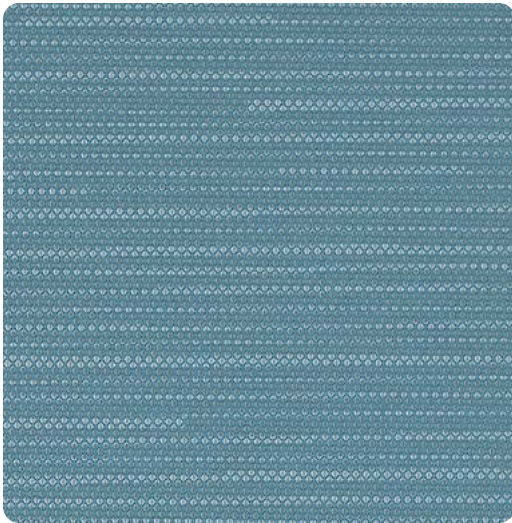
Kiss

content: 80% Post-Consumer Recycled Polyester, 20% Polyester
finish: Non-Fluorine Stain Resistant
repeat: 13.75" H, 18.25" V
durability: 75,000 Double Rubs
seam slippage: 98.2 lbs. Warp / 94.4 lbs. Weft
flame retardance: UFAC/NFPA 260 Class 1, CAL 117-2013 Section 1
cleaning: **W S** (Bleach Cleanable 9:1)
GREENGUARD Gold Certified®

Stinson®

customerrelations@cfstinson.com | 800.841.6279

Row • Additional Colors / Order Samples: momentumtextilesandwalls.com



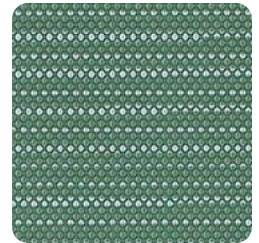
Rain



Cloud



Fjord



Willow



Nightfall



Nutmeg



Auburn

content: 100% Polyurethane / PVC Free
repeat: Non-Matching
durability: 500,000 Double Rubs
seam slippage: 110 lbs. Warp / 84 lbs. Weft
flame retardance: UFAC/NFPA 260 Class 1, CAL 117-2013 Section 1
cleaning: **W** (Bleach Cleanable 4:1)
GREENGUARD Certified® PVC Free



MOMENTUM TEXTILES & WALLCOVERING

customerservice@momtex.com | 800.366.6839

Scout • Additional Colors / Order Samples: mayerfabrics.com • Pattern Scale Shown at 50%



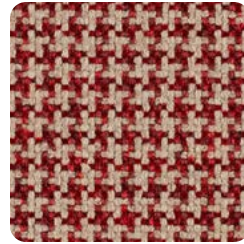
Carbon



Flax



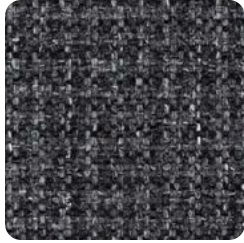
Brass



Campfire



Shamrock



Charcoal



Admiral



Anchor



Everglade

content: 91% Polyester, 7% Polyurethane, 2% Silicone
finish: Supreen (Silicone)
repeat: 0.275" H, 0.275" V
durability: 100,000 Double Rubs
seam slippage: 88.5 lbs. Warp / 89.5 lbs. Weft
flame retardance: UFAC/NFPA 260 Class 1, CAL 117-2013 Section 1
cleaning: **W S BC** (Bleach Cleanable 9:1)
GREENGUARD Certified®

MAYERFABRICS

customerservice@mayerfabrics.com | 800.428.4415

Smart Soft • Additional Colors / Order Samples: momentumtextilesandwalls.com



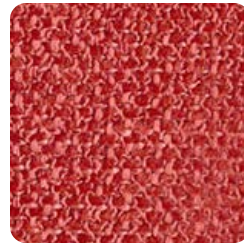
Silver



Bisque



Jute



Guava



Kiwi



Slate



Delft



Lapis



Bali

content: 50% Recycled Polyester, 50% Polyester
repeat: Non-Matching
finish: Crypton®
durability: 100,000 Double Rubs
seam slippage: 62 lbs. Warp / 92.7 lbs. Weft
flame retardance: UFAC/NFPA 260 Class 1, CAL 117-2013 Section 1
cleaning: **W S** (Bleach Cleanable 10:1)
Reduced Environmental Impact: Recycled Fiber Content, GREENGUARD Gold Certified, NSF 336 Compliant

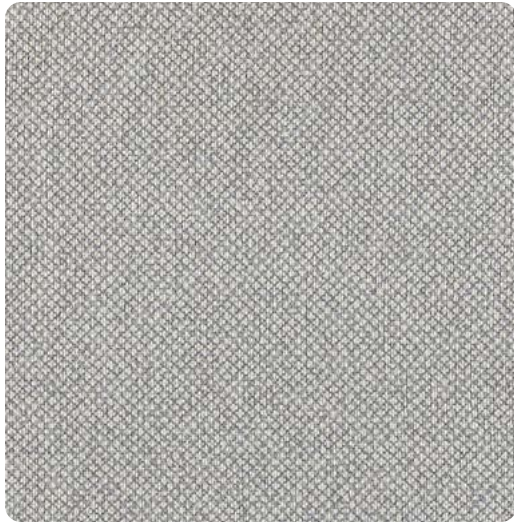


MOMENTUM
 TEXTILES & WALLCOVERING

customerservice@momtex.com | 800.366.6839

To ensure color accuracy, please order a memo sample. More info at hpf.com/NOW.

Tribeca CV • Additional Colors / Order Samples: momentumtextilesandwalls.com



Cloud



Cane



Rubine



Lichen



Airy



Mariner



Plume

content: 100% Clean Vinyl / Phthalate Free
finish: Protective Topcoat
repeat: Non-Matching
durability: 100,000 Double Rubs
seam slippage: 42 lbs. Warp / 46 lbs. Weft
flame retardance: UFAC/NFPA 260 Class 1, CAL 117-2013 Section 1
cleaning: **W** (Bleach Cleanable 10:1)
GREENGUARD Certified® PVC Free



MOMENTUM
 TEXTILES & WALLCOVERING

customerservice@momtex.com | 800.366.6839

Vanguard CV • Additional Colors / Order Samples: momentumtextilesandwalls.com



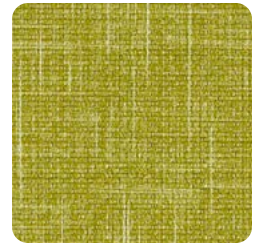
French



Cream



Autumn



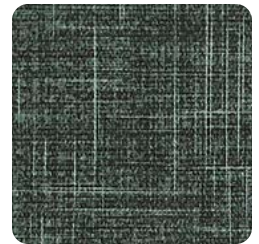
Sprout



Calico



Polaris



Spruce

content: 100% Clean Vinyl / Phthalate Free
finish: Protective Topcoat
repeat: Non-Matching
durability: 100,000 Double Rubs
seam slippage: 42 lbs. Warp / 46 lbs. Weft
flame retardance: UFAC/NFPA 260 Class 1, CAL 117-2013 Section 1
cleaning: **W** (Bleach Cleanable 10:1)
GREENGUARD Certified® PVC Free

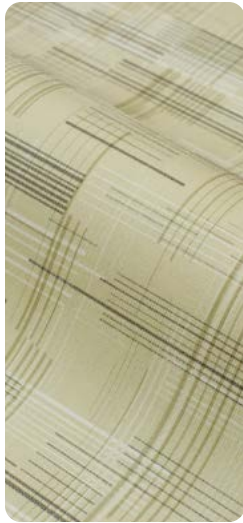


MOMENTUM
 TEXTILES & WALLCOVERING

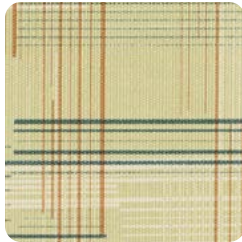
customerservice@momtex.com | 800.366.6839

To ensure color accuracy, please order a memo sample. More info at hpf.com/NOW.

Balance • Additional Colors / Order Samples: mayerfabrics.com • Pattern Scale Shown at 50%



Cream



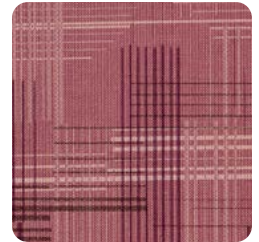
Celadon



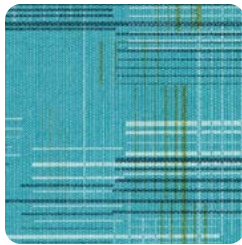
Caramel



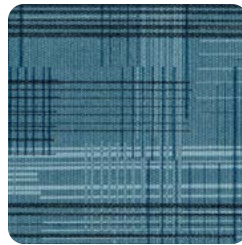
Copper



Pinot



Sea



Denim



Grey Mist



Thistle

content:
finish:
repeat:
durability:
seam slippage:
flame retardance:
cleaning:

Vinyl with Polyester Backing
Soil & Stain Resistant Top Coat with Ink Resistant Tech.
23" H, 23.5" V
1,300,000 Double Rubs
35 Warp / 30 Weft
UFAC/NFPA 260 Class 1, CAL 117-2013 Section 1
W CFC BC (Bleach Cleanable 4:1)
GREENGUARD Certified®

MAYERFABRICS

customerservice@mayerfabrics.com | 800.428.4415

Graph • Additional Colors / Order Samples: cfstinson.com • Pattern Scale Shown at 50%



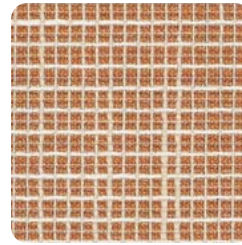
Key Lime



Foil



Sand Dune



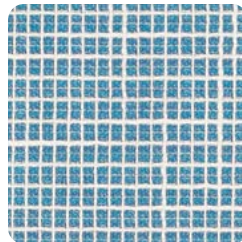
Spicy



Paprika



Fossil



Utopia



Marine



Maritime

content:
finish:
repeat:
durability:
seam slippage:
flame retardance:
cleaning:

83% Polyester, 17% Post Consumer Recycled Polyester
Non-PFOA Stain Resistant
0.188" H, 0.875" V
75,000 Double Rubs
47 lbs. Warp / 52 lbs. Weft
UFAC/NFPA 260 Class 1, CAL 117-2013 Section 1
W S (Bleach Cleanable 9:1)
GREENGUARD Gold Certified®

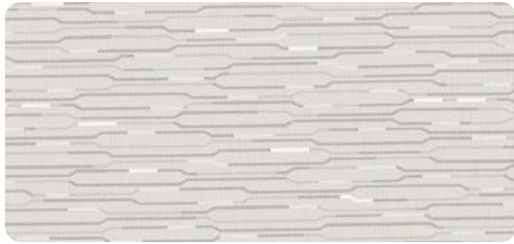
Stinson®

customerrelations@cfstinson.com | 800.841.6279

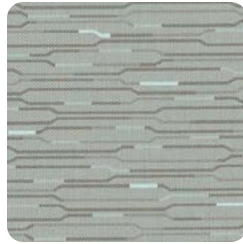
To ensure color accuracy, please order a memo sample. More info at hphi.com/NOW.

grade 7

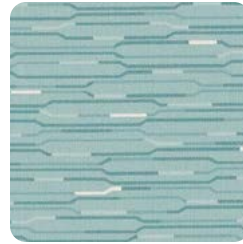
Level  • Order Samples: cfstinson.com • Pattern Scale Shown at 50%



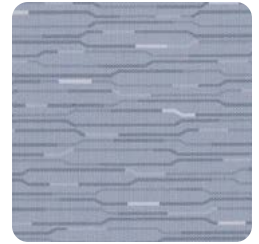
Bavaria



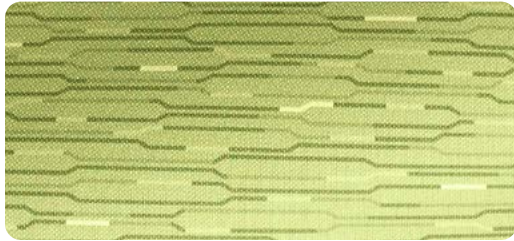
Slate



Aegean



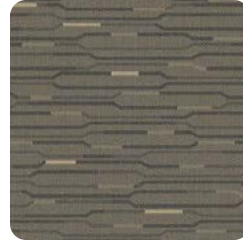
Lapis



Mojito



Tea



Earth




Shadow

content: Vinyl Surface with Polyester Backing
finish: Advanced Soil & Stain Resistant Top Coat
repeat: 4.625" H, 8.625" V
durability: 1,300,000 Double Rubs
seam slippage: 35 lbs. Warp / 30 lbs. Weft
flame retardance: UFAC/NFPA 260 Class 1, CAL 117-2013 Section 1
cleaning: **W** (Bleach Cleanable 9:1)
GREENGUARD Certified®

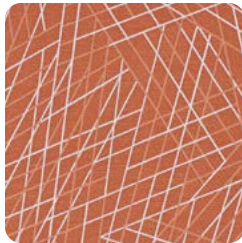
Stinson®

customerrelations@cfstinson.com | 800.841.6279

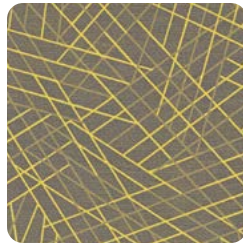
Vector  • Order Samples: cfstinson.com • Pattern Scale Shown at 25%



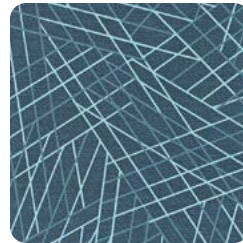
Lime



Spice



Segment



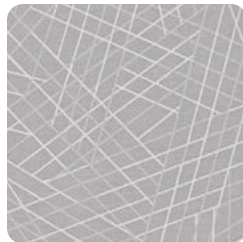
Parallel



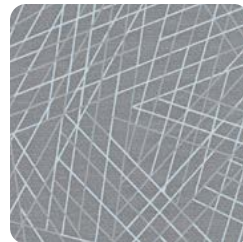
Blue



Suede



Angle



Ray



Intersect

content: Phthalate-Free Vinyl Face with Polyester Backing
finish: Advanced Soil and Stain Resistant Top Coat + Ink Resistance
repeat: 11.25" H, 11.875" V
durability: 100,000 Double Rubs
seam slippage: 46 lbs. Warp / 35 lbs. Weft
flame retardance: UFAC/NFPA 260 Class 1, CAL 117-2013 Section 1
cleaning: **W S BC** (Bleach Cleanable 9:1)
GREENGUARD Certified®

Stinson®

customerrelations@cfstinson.com | 800.841.6279

To ensure color accuracy, please order a memo sample. More info at hpfi.com/NOW.

grade **8**

Fidget  • Order Samples: cfstinson.com • Pattern Scale Shown at 25%



Moonbeam



Valley



Infrared



Garnet



Adventure



Zeal



Seaport




Voyager

content: 70% Polyester, 30% Nylon with Acrylic Backing
finish: Non-Fluorine Stain Resistant
repeat: 14.125" H, 14.25" V
durability: 100,000 Double Rubs
seam slippage: 47.1 lbs. Warp / 73.3 lbs. Weft
flame retardance: UFAC/NFPA 260 Class 1, CAL 117-2013 Section 1
cleaning: **W** (Bleach Cleanable 4:1)
GREENGUARD Gold Certified®

Stinson®

customerrelations@cfstinson.com | 800.841.6279

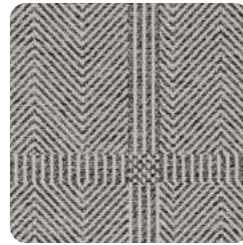
Kingsman  • Order Samples: cfstinson.com • Pattern Scale Shown at 25%



Quarry



Prairie



Graystone



Manor



Regatta



York



Brownstone

content: 50% UV Olefin, 26% UV Polyester, 24% Olefin
finish: Non-PFOA Stain Resistant
repeat: 14.0" H, 9.5" V (Directional)
durability: 75,000 Double Rubs
seam slippage: 102 lbs. Warp / 93 lbs. Weft
flame retardance: UFAC/NFPA 260 Class 1, CAL 117-2013 Section 1
cleaning: **W S** (Bleach Cleanable 9:1)
GREENGUARD Gold Certified®

Stinson®

customerrelations@cfstinson.com | 800.841.6279

To ensure color accuracy, please order a memo sample. More info at hpi.com/NOW.

grade **8**

Mixology CV 

• Additional Colors / Order Samples: momentumtextilesandwalls.com



Chalice



Cheshire



Tea Leaf



Fresco



Nightlife



Grotto



Bamboo



Cascade



Chambray

content: 100% Clean Vinyl / Phthalate Free
finish: Protective Overcoat®
repeat: 27" H, 0.125" V
durability: 250,000 Double Rubs
seam slippage: 100.6 lbs. Warp / 101.9 lbs. Weft
flame retardance: UFAC/NFPA 260 Class 1, CAL 117-2013, IMO Part 8
cleaning: **W S** (Bleach Cleanable 10:1)
GREENGUARD Gold Certified®



MOMENTUM
 TEXTILES & WALLCOVERING

customerservice@momtex.com | 800.366.6839

Sanya CV 

• Additional Colors / Order Samples: momentumtextilesandwalls.com



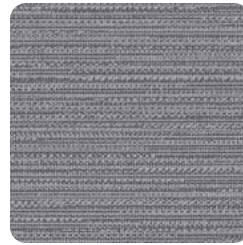
Sable



Clay



Flax



Nickel



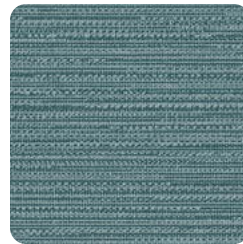
Slate



Cyprus



Fern



Pool



Dusk

content: 100% Clean Vinyl / Phthalate Free
finish: Protective Overcoat®
repeat: 14.75" H, 19" V
durability: 220,000 Double Rubs
seam slippage: 46 lbs. Warp / 39 lbs. Weft
flame retardance: UFAC/NFPA 260 Class 1, CAL 117-2013 Sec. 1, IMO Part 8
cleaning: **W S** (Bleach Cleanable 10:1)
GREENGUARD Certified®, NSF 336 Compliant

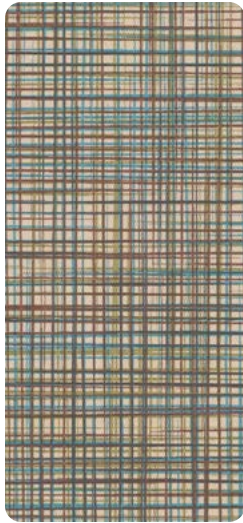


MOMENTUM
 TEXTILES & WALLCOVERING

customerservice@momtex.com | 800.366.6839

To ensure color accuracy, please order a memo sample. More info at hpfi.com/NOW.

Speakeasy CV • Additional Colors / Order Samples: momentumtextilesandwalls.com



Herb



Fava



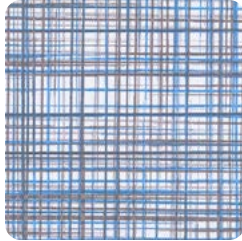
Amber



Flint



Baltic



Sky



Teal



Kohl



Truffle

content: 100% Clean Vinyl / Phthalate Free
finish: Protective Topcoat®
repeat: 17.5" H, 18.375" V
durability: 200,000 Double Rubs
seam slippage: 46 lbs. Warp / 39 lbs. Weft
flame retardance: UFAC/NFPA 260 Class 1, CAL 117-2013 Sec. 1, IMO Part 8
cleaning: **W** (Bleach Cleanable 10:1)
GREENGUARD Certified®



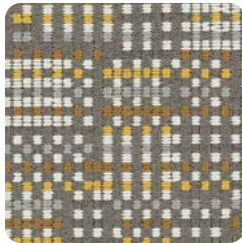
MOMENTUM
 TEXTILES & WALLCOVERING

customerservice@momtex.com | 800.366.6839

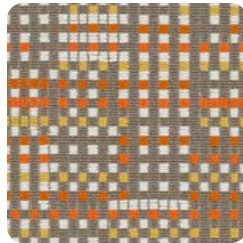
Switchboard • Order Samples: cfstinson.com • Pattern Scale Shown at 50%



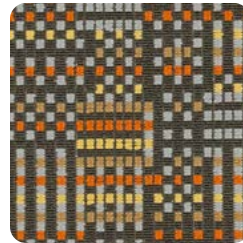
Meadow



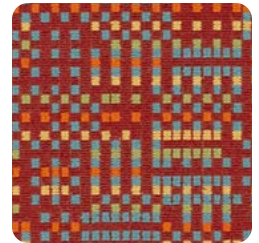
Sahara



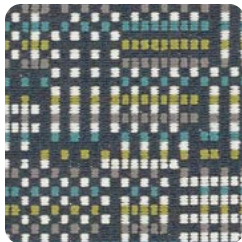
Plateau



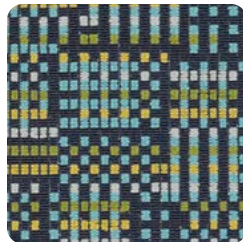
Ember



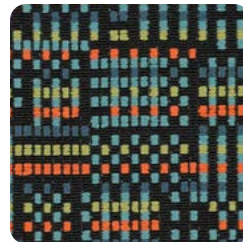
Tango



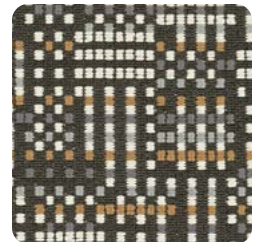
Commodore



Horizon



Carnival



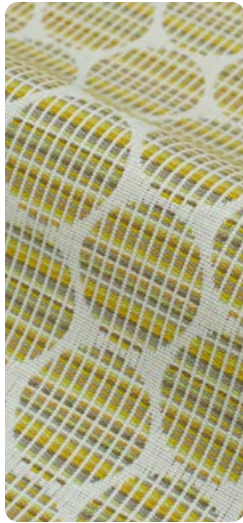
Granite

content: 42% Post-Consumer Recycled Polyester,
 36% Post-Industrial Recycled Polyester,
 22% Polyester
finish: Non-PFOA Stain Resistant
repeat: 9.75" H, 6.25" V
durability: 78,000 Double Rubs
seam slippage: 71 lbs. Warp / 92 lbs. Weft
flame retardance: UFAC/NFPA 260 Class 1, CAL 117-2013 Section 1
cleaning: **W S** (Bleach Cleanable 9:1)
GREENGUARD Gold Certified®

Stinson®

customerrelations@cfstinson.com | 800.841.6279

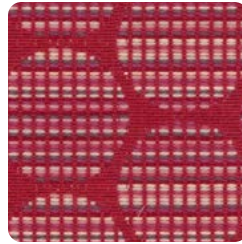
Centric • Additional Colors / Order Samples: mayerfabrics.com • Pattern Scale Shown at 50%



Saffron



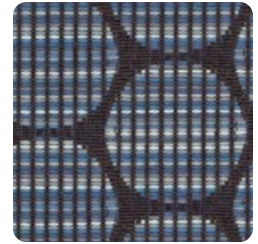
Cinnamon



Ruby



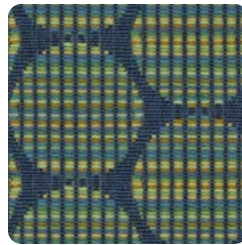
Denim



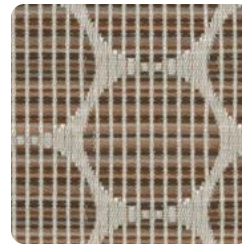
Ink



Meadow



Grotto



Mocha



Shale

content:
finish:
repeat:
durability:
seam strength:
flame retardance:
cleaning:

81% Polyester/19% Post-Consumer Recycled Polyester
Crypton® with antimicrobial Silver Ion technology
2.5" H, 1.375" V
102,000 Double Rubs
84 lbs. Warp / 90 lbs. Weft
UFAC/NFPA 260 class 1, CAL 117-2013 Section 1
C W BC (Bleach Cleanable 9:1)
GREENGUARD Certified®

MAYERFABRICS

customerservice@mayerfabrics.com | 800.428.4415

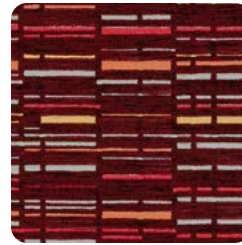
Glimpse • Order Samples: cfstinson.com • Pattern Scale Shown at 25%



Zen



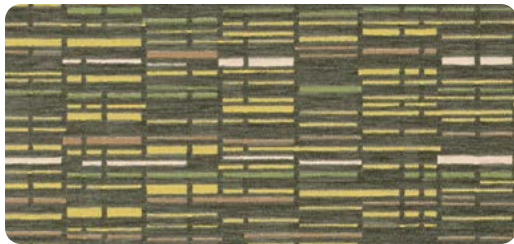
Vivid



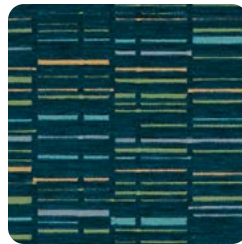
Cordial



Sonic



Apple



Splash



Legend



Pier

content:
finish:
repeat:
durability:
seam slippage:
flame retardance:
cleaning:

65% Polyester, 32% Cotton
Non-Fluorine Stain Resistant
14.0" H, 23.125" V
100,000 Double Rubs
134 lbs. Warp / 103 lbs. Weft
UFAC/NFPA 260 Class 1, CAL 117-2013 Section 1
S
GREENGUARD GOLD Certified®

Stinson®

customerrelations@cfstinson.com | 800.841.6279

To ensure color accuracy, please order a memo sample. More info at hphi.com/NOW.

Silica

Additional Colors / Order Samples: momentumtextilesandwalls.com



Sands



Tropic



Appletini



Lemon



Shale



Regatta



Dewpoint



Marigold



Breakwater



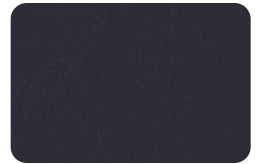
Bright Night



Surf



Dare



Gallant

content:
repeat:
durability:
seam strength:
flame retardance:
cleaning:

100% Silicone
Non-Matching
365,000 Double Rubs
71 lbs. Warp / 79 lbs. Weft
UFAC/NFPA 260 Class 1, CAL 117-2013 Section 1
W S (Bleach Cleanable 4:1)
GREENGUARD Gold Certified®; PVC Free



MOMENTUM
TEXTILES & WALLCOVERING

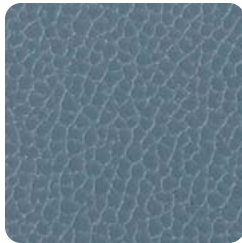
customerservice@momtex.com | 800.366.6839

Silica Leather

Additional Colors / Order Samples: momentumtextilesandwalls.com



Barley



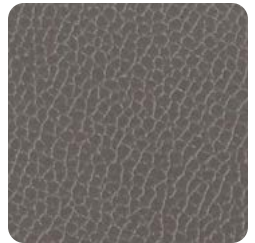
Chambray



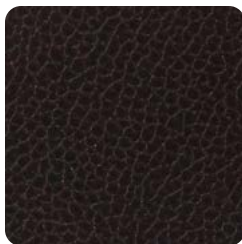
Marigold



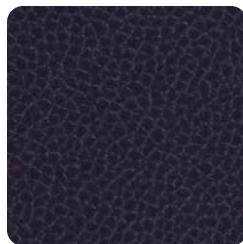
Saddle



Pewter



Eclipse



Ink



Aloe



Madder

content:
repeat:
durability:
seam strength:
flame retardance:
cleaning:

100% Silicone
Non-Matching
210,000 Double Rubs
72 lbs. Warp / 84 lbs. Weft
UFAC/NFPA 260 Class 1, CAL 117-2013 Section 1
W S (Bleach Cleanable 4:1)
GREENGUARD Gold Certified®; PVC Free



MOMENTUM
TEXTILES & WALLCOVERING

customerservice@momtex.com | 800.366.6839

To ensure color accuracy, please order a memo sample. More info at hpi.com/NOW.

grade 9

Tangram 

• Additional Colors / Order Samples: cfstinson.com • Pattern Scale Shown at 25%



Flax



Grotto



Sunflower



Guava



Slate



Denim



Key Lime



Tomato



Blackboard

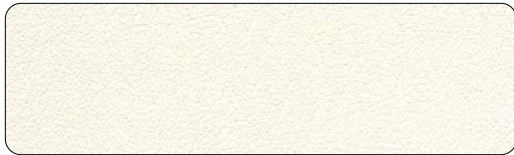
content: 74% Polyester, 17% Pre Consumer Recycled Polyester, 9% Post Consumer Recycled Polyester
finish: Non-PFOA Stain Resistant
repeat: 7.125" H, 5.125" V
durability: 51,000 Double Rubs
seam slippage: 78 lbs. Warp / 55 lbs. Weft
flame retardance: UFAC/NFPA 260 Class 1, CAL 117-2013 Section 1
cleaning: **W S** (Bleach Cleanable 9:1)
GREENGUARD Gold Certified®

Stinson®

customerrelations@cfstinson.com | 800.841.6279

Ultraleather® | Pro 

• Additional Colors / Order Samples: ultrafabricsinc.com



Swan



Agave



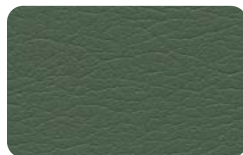
Melon



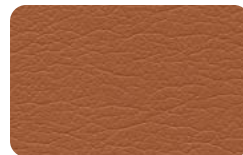
Moon Glow



Hazelwood



Arugula



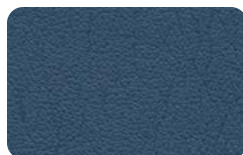
Raw Sienna



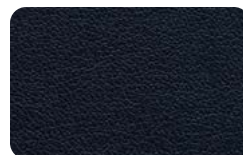
Char



Blue Bird



Blueberry



Sailor



Dark Knight

content: 100% Polycarbonate Polyurethane
finish: None
repeat: Non-Matching
durability: 500,000 Double Rubs
seam strength: 40 lbs. Warp / 70 lbs. Weft
flame retardance: UFAC/NFPA 260 Class 1, CAL 117-2013 Section 1
cleaning: **W S** (Bleach Cleanable 5:1)
Indoor Advantage Gold® Certified

Ultrafabrics®

customerservice@ultrafabricsinc.com | 877.309.6648

To ensure color accuracy, please order a memo sample. More info at hpfi.com/NOW.

grade 10

Fiberdrill

• Additional Colors / Order Samples: cfstinson.com • Pattern Scale Shown at 50%



Classic



Praline



Fava



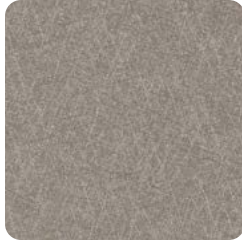
Honey



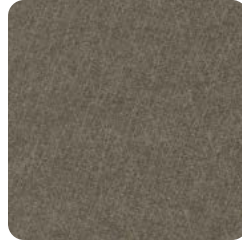
Cinnamon



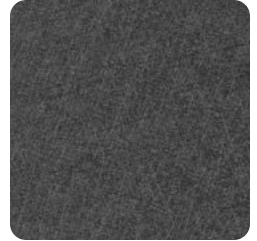
Elm



Storm



Graphite



Black Ice

content:

finish:

repeat:

durability:

seam slippage:

flame retardance:

cleaning:

100% Polyurethane (Polycarbonate Resins)

Advanced Soil & Stain Resistant Top Coat

Non-Matching

300,000 Double Rubs

70.3 lbs. Warp / 66.2 lbs. Weft

UFAC/NFPA 260 Class 1, CAL 117-2013 Section 1

W (Bleach Cleanable 4:1)

GREENGUARD Certified®

Stinson®

customerrelations@cfstinson.com | 800.841.6279

Meteor

• Order Samples: cfstinson.com • Pattern Scale Shown at 25%



Cobalt



March



Terra



Cliff



Moonstone



Vessel



Rain



Nomad



Pastoral

content:

finish:

repeat:

durability:

seam slippage:

flame retardance:

cleaning:

Non-Phthalate Vinyl Surface with Polyester Backing

Advanced Soil & Stain Resistant Top Coat

13.125" H, 11.875" V

100,000 Double Rubs

46 lbs. Warp / 35 lbs. Weft

UFAC/NFPA 260 Class 1, CAL 117-2013 Section 1

W (Bleach Cleanable 9:1)

GREENGUARD Certified®

Stinson®

customerrelations@cfstinson.com | 800.841.6279

To ensure color accuracy, please order a memo sample. More info at hpf.com/NOW.

grade 10

Pod • Order Samples: cfstinson.com • Pattern Scale Shown at 25%



Cruise



Aria



Cinnamon



Praline



Dill



Surf



Cascade



Walnut



Magic

content: Non-Phthalate Vinyl with Polyester Backing
finish: Advanced Soil & Stain Resistant Top Coat
repeat: 13.125" H, 13.875" V
durability: 100,000 Double Rubs
seam slippage: 46 lbs. Warp / 35 lbs. Weft
flame retardance: UFAC/NFPA 260 Class 1, CAL 117-2013 Section 1
cleaning: **W S** (Bleach Cleanable 9:1)
GREENGUARD Certified®

Stinson®

customerrelations@cfstinson.com | 800.841.6279

Power Grid • Additional Colors / Order Samples: cfstinson.com • Pattern Scale Shown at 25%



Sapphire



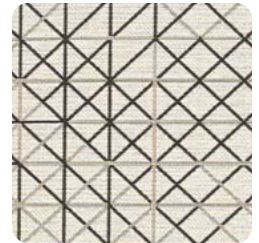
Dandelion



Mixed Berry



Graystone



Icon



Celestial



Lapis



York



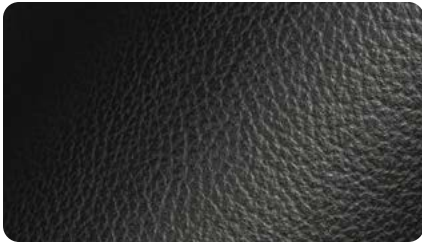
Top Hat

content: 67% Post-Consumer Recycled Polyester,
33% Solution Dyed Nylon
finish: Non-PFOA Stain Resistant
repeat: 28" H, 23.375" V
durability: 90,000 Double Rubs
seam slippage: 93.4 lbs. Warp / 129.4 lbs. Weft
flame retardance: UFAC/NFPA 260 Class 1, CAL 117-2013 Section 1
cleaning: **W S** (Bleach Cleanable 4:1)
GREENGUARD Gold Certified®

Stinson®

customerrelations@cfstinson.com | 800.841.6279

Classico Leather



Black



Chocolate



Wine

content: Top Grain Dyed Cow Hide
finish: Semi-Aniline
repeat: Non-Matching
flame retardance: UFAC/NFPA 260 Class 1, CAL 117-2013 Section 1
cleaning: **W**

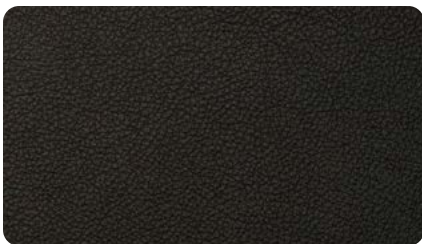
Baroque Leather



ALO4 Blackberry

content: Top Grain, Semi-Aniline Dyed Cow Hide
finish: Two-Tone Savage with Clear Coat
repeat: Non-Matching
flame retardance: UFAC/NFPA 260 Class 1, CAL 117-2013 Section 1
cleaning: **W**

Mammut Leather



AL18 Black



AL16 Hunter

content: Top Grain, Semi-Aniline Dyed Cow Hide
finish: Water-Based Top Coat
repeat: Non-Matching
flame retardance: CAL 117-2013 Section 1
cleaning: **W**

