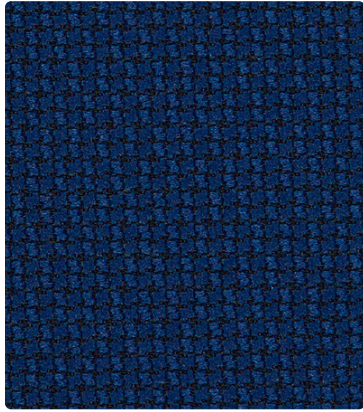
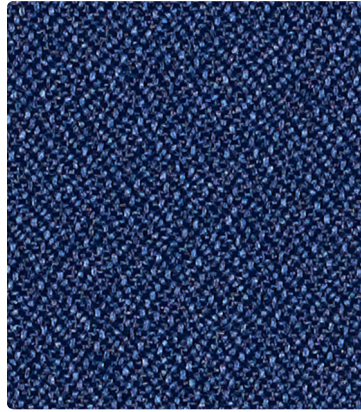


CROSS CHECK



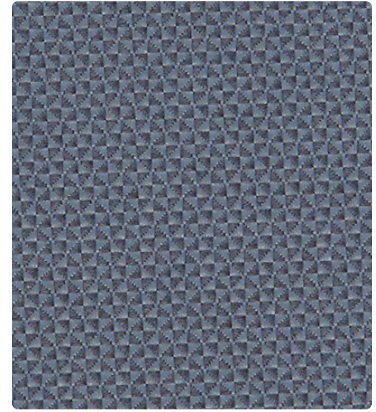
299-054
Marine

FORTE



298-004
Cadet

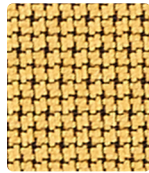
QUATTRO



300-024
Laguna



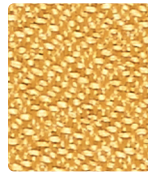
299-037
Biscuit



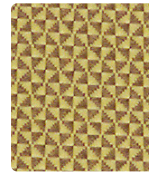
299-002
Sunshine



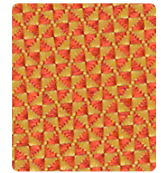
298-017
Pumice



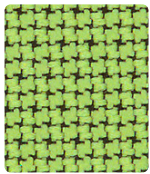
298-012
Sunray



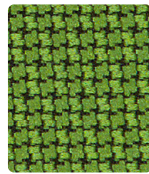
300-002
Wheat



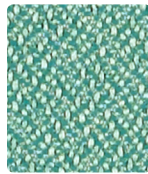
300-019
Golden Orange



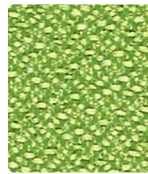
299-003
Lime



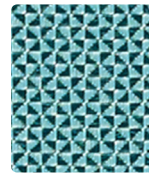
299-033
Evergreen



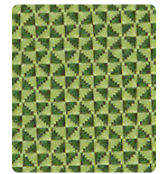
298-033
Fairway



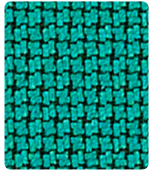
298-053
Grass



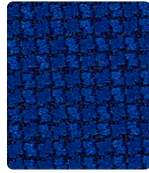
300-023
Mallard



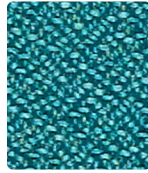
300-003
Spring Green



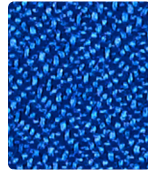
299-053
Peacock



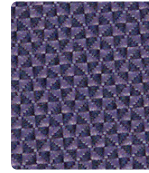
299-024
Blue Ribbon



298-044
Peacock



298-014
Blue Ray



300-004
Midnight Blue



300-014
Skyway



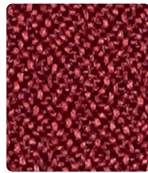
299-021
Red Baron



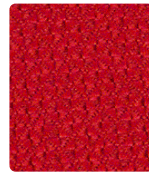
299-011
Vermillion



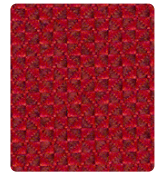
298-001
Rouge



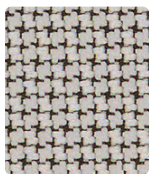
298-011
Port



300-011
Hibiscus



300-001
Deep Crimson



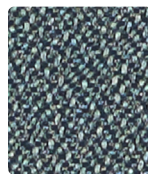
299-036
Dove



299-026
Platinum



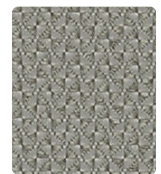
298-026
Flint



298-016
Slate



300-036
Pumice



300-026
Mercury



299-014
Imperial



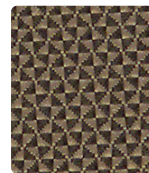
299-006
Slate Black



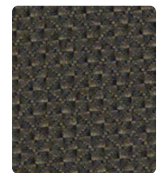
298-036
Char



298-006
Tuxedo



300-016
Khaki



300-006
Granite

TECHNICAL INFORMATION

Standards Coordinates | Interactive Card

Pattern 54"	Content and Backing	Certifications	Weight/ Linear Yd.	Pattern Repeat	Finish	Abrasion Wyzenbeek	Light- Fastness	Flammability	Cleaning Code
CROSS CHECK <i>Multi-use⁺</i>	100% Polyester Backing: Acrylic	GREENGUARD Gold	10.71 oz.	Non- Matching	Stain Repellent	258,000 [^] Double Rubs	40 hours	Cal. 117-2013 NFPA 260/UFAC Class 1 ASTM E84 (Adhered) Class 2 or B	S
FORTE <i>Multi-use⁺</i>	100% Polyester Backing: Acrylic	GREENGUARD Gold	12.1 oz.	None	Stain Repellent	183,000 [^] Double Rubs	40 hours	Cal. 117-2013 NFPA 260/UFAC Class 1 ASTM E84 (Adhered) Class 2 or B	WS
QUATTRO <i>Directional Multi-use⁺</i>	100% Polyester Backing: Acrylic	GREENGUARD Gold	13.06 oz.	Non- Matching	Stain Repellent	237,000 [^] Double Rubs	40 hours	Cal. 117-2013 NFPA 260/UFAC Class 1 ASTM E84 (Unadhered) Class 1 or A IMO A.652(16)8.2	S

REDUCED ENVIRONMENTAL IMPACT

These products are GREENGUARD Gold Certified for low chemical and particle emissions to UL standard UL 2818 and may contribute to LEED certification.

CARE AND CLEANING INFORMATION

S: Solvent WS: Water/Solvent Cleaner

DYE TRANSFER DISCLAIMER

Certain clothing and accessory dyes (such as those used on denim jeans) may migrate to lighter colors. This phenomenon is increased by humidity and temperature and is irreversible. Mayer Fabrics will not assume responsibility for dye transfer caused by external contaminants. Please check compatibility when using this product in combination with painted or varnished surfaces.

ADDITIONAL INFORMATION

[^] Abrasion test results exceeding ACT Performance Guidelines are not an indicator of product lifespan. Multiple factors affect fabric durability and appearance retention.

⁺ A multi-use fabric that can be used for upholstery, panels, wrapped walls, and acoustic.

Warranty: Please refer to the Mayer website for warranty information by pattern.

Custom Colors: All patterns can be custom colored. Minimum yardage applies.

Digital Swatch Card Color Matching: Due to color variations on different monitors and color printers, actual swatch colors may vary slightly. Please request a memo sample from Mayer Fabrics to ensure proper color representation.

Complete and current product information available at mayerfabrics.com.



These fabrics meet or exceed
these ACT performance guidelines.
*Certification Marks owned by ACT®

©2022
FQCC3CD MF0922



OC
SEATING

Pattern	Grade
CROSS CHECK	3
FORTE	3
QUATTRO	3

MAYERFABRICS