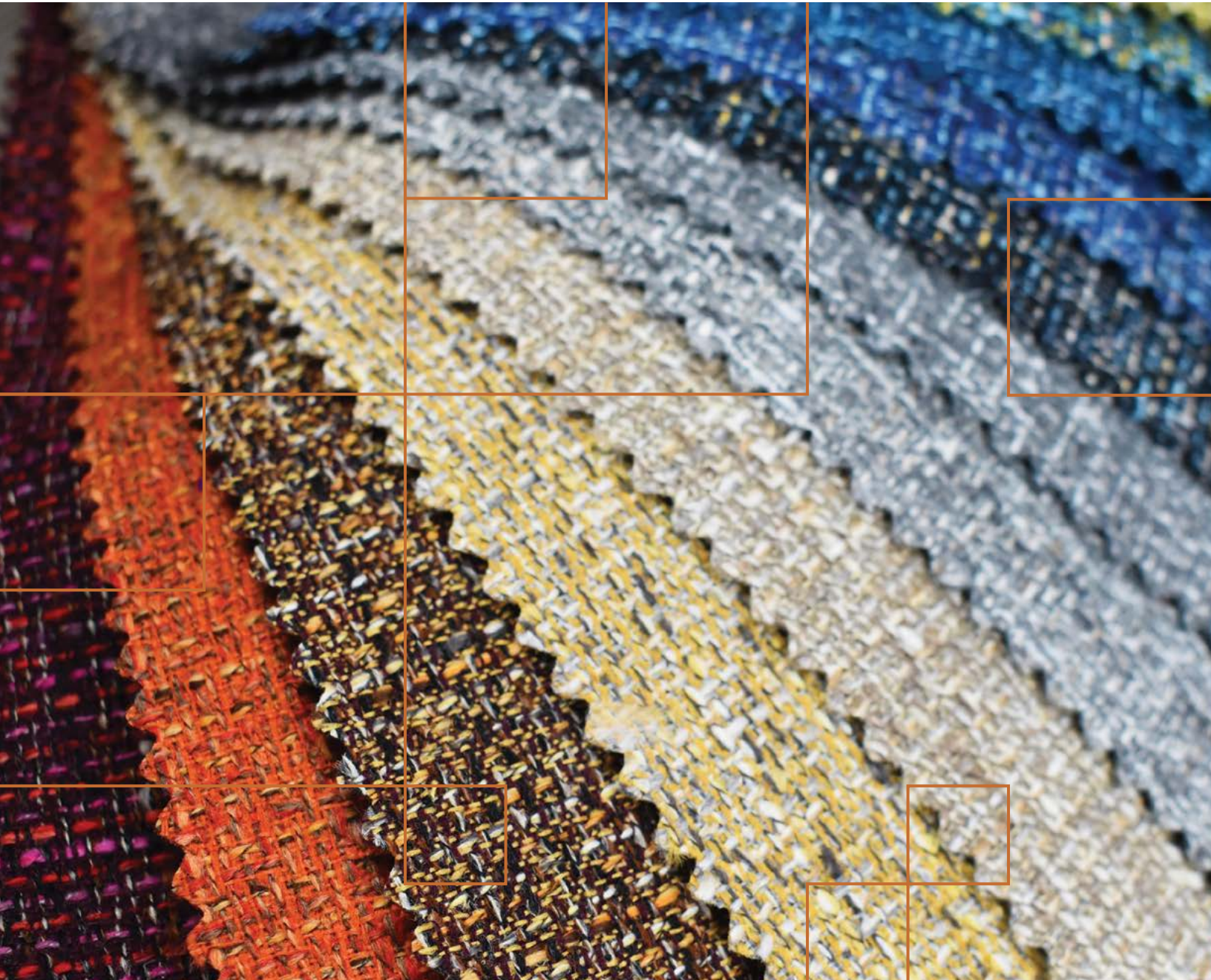


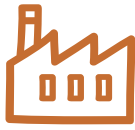
NOW

FABRIC OPTIONS



HPFi





» Index

Grade 1

- 3 Dillon (32)
- 3 Dorset (21)
- 4 Expo (13)
- 4 Yosemite (11)

Grade 2

- 5 Cross Check (20)
- 5 Hathaway (19)
- 6 Linette (16)
- 6 Origin (42)
- 7 Punch Card (14)
- 7 Quattro (18)
- 8 Ridgecrest (12)
- 8 Utmost (11)

Grade 3

- 9 Castillo (16)
- 9 Chronicle (12)
- 10 Connelly (14)
- 10 Ego (9)
- 11 Foundation 10 (37)
- 11 Graph (13)
- 12 Rumba (8)
- 12 Scatter (9)
- 13 Staple (29)
- 13 Viceroy (19)

Grade 4

- 14 Apprentice (11)
- 14 Box Chain (17)
- 15 Fedora (25)
- 15 Golly (22)
- 16 Haute (11)
- 16 Lara (58)
- 17 Moby (12)
- 17 Tango (10)

Grade 5

- 18 Cover Cloth (24)
- 18 Delano (23)
- 19 Endurance EPU (36)
- 19 Evo CV (36)
- 20 Flanders (23)
- 20 Gala (9)
- 21 Lattice (10)
- 21 Midway (14)
- 22 Silverweave (37)
- 22 Vista NFR (50)

Grade 6

- 23 Beaux (14)
- 23 Criss Cross 2.0 (38)
- 24 Dexter EPU (13)
- 24 Honeycomb Shag (8)
- 25 Hopsack (18)
- 25 Roadmap (8)
- 26 Row (30)
- 26 Scout (14)
- 27 Tribeca CV (20)
- 27 Vanguard CV (18)

Grade 7

- 28 Caspian (14)
- 28 Level (9)
- 29 Mixer EPU (20)
- 30 Mixology (12)
- 30 Sentiero (24)
- 30 Vector (9)

Grade 8

- 31 Arc (7)
- 31 Curator (10)
- 32 Fidget (8)
- 32 Haven (25)
- 33 Isle (6)
- 33 Riverstone (9)

Grade 9

- 34 Cycle (11)
- 34 Fiberdrill (15)
- 35 Glimpse (8)
- 35 Silica (59)
- 36 Tradewinds CV (8)
- 36 Upgrade (8)

Grade 10

- 37 Centric (12)
- 37 Meteor (9)
- 38 Pebble Trail (8)
- 38 Terra (15)

Grade L

- 39 Classico (3)
- 39 Baroque (1)
- 39 Mammut (2)



Look for this symbol for upholsteries best suited for healthcare applications.

To ensure color accuracy, please order a memo sample. More info at hpfi.com/NOW.

Dillon

Additional Colors / Order Samples: culcontract.com



Apple Green



Sage



Straw



Fiesta



Lipstick



Ocean



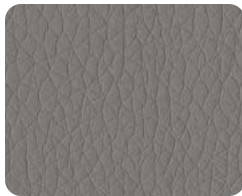
Williamsburg



Quarry



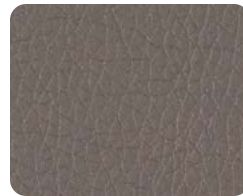
Java



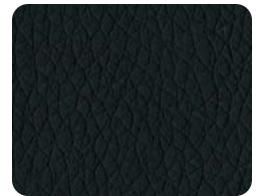
Steel



Lucid



Storm



Black

content: 100% Polyurethane
finish: Antimicrobial - Silver Ion Technology
repeat: Non-Matching
durability: 200,000 Double Rubs
seam strength: 92 lbs. Warp / 77 lbs. Weft
flame retardance: UFAC/NFPA 260 Class 1, CAL 117-2013 Section 1
cleaning: **W** (Bleach Cleanable 5:1)

CULP CONTRACT

contract@culp.com | 336.888.6274

[Back to Index](#)

Dorset

Additional Colors / Order Samples: culcontract.com



Avocado



Smoke Blue



Ocean Blue



Copper



Cayenne



Taupe



Platinum



Denim



Charcoal

content: 100% Polyester
finish: i-Clean™ Stain & Moisture Repellent
repeat: Non-Matching
durability: 55,000 Double Rubs
seam slippage: 41 lbs. Warp / 38 lbs. Weft
flame retardance: UFAC/NFPA 260 Class 1, CAL 117-2013 Section 1
cleaning: **W**

CULP CONTRACT

contract@culp.com | 336.888.6274

To ensure color accuracy, please order a memo sample. More info at hpi.com/NOW.

grade 1

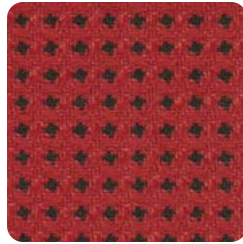
Expo • Additional Colors / Order Samples: momentumtextilesandwalls.com



Lemon



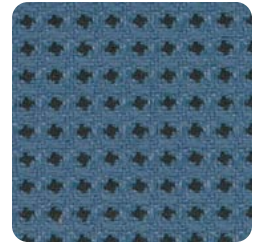
Zest



Festive



Viola



Sky



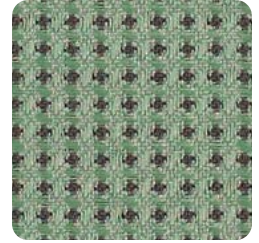
Tuxedo



Fog



Sprout



Oasis

content:

65% Post Industrial Recycled Polyester,
35% Post Consumer Recycled Polyester
.125" H, .125" V

repeat:

durability:

seam slippage:

flame retardance:

cleaning:

102,000 Double Rubs
29 lbs. Warp / 29 lbs. Weft
UFAC/NFPA 260 Class 1, CAL 117-2013 Section 1

W S

Recycled Fiber Content; GREENGUARD Gold Certified,
NSF 336 Compliant



MOMENTUM
TEXTILES & WALLCOVERING

customerservice@momtex.com | 800.366.6839

Yosemite • Additional Colors / Order Samples: culpcontract.com



Chamois



Penny



Chestnut



Oxblood



Earth



Raven



Silt



Balsa



Parchment

content:

100% Polyurethane with 70% Polyester,
30% Cotton Backing

finish:

repeat:

durability:

seam strength:

flame retardance:

cleaning:

Antimicrobial
Non-Matching
100,000 Double Rubs
61 lbs Warp / 68 lbs. Weft
UFAC/NFPA 260 Class 1, CAL 117-2013 Section 1

W (Bleach Cleanable 5:1)

CULP CONTRACT

contract@culp.com | 336.888.6274

To ensure color accuracy, please order a memo sample. More info at hpfi.com/NOW.

grade 2

Cross Check • Additional Colors / Order Samples: mayerfabrics.com



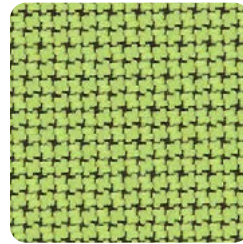
Paradise



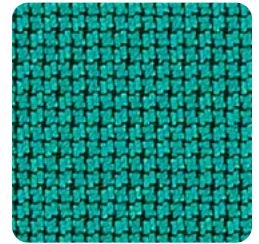
Sunshine



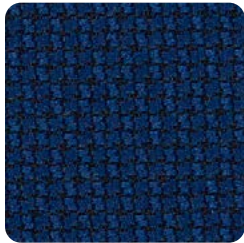
Red Baron



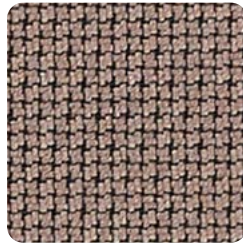
Lime



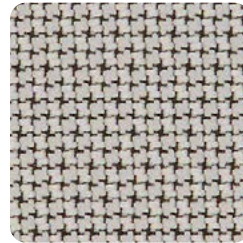
Peacock



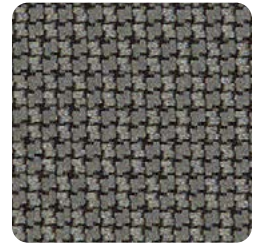
Marine



Taupe



Dove



Platinum

content: 100% Polyester
finish: Stain Repellent
repeat: Non-Matching
durability: 258,000 Double Rubs
seam slippage: 55 lbs. Warp / 59 lbs. Weft
flame retardance: UFAC/NFPA 260 Class 1, CAL 117-2013 Section 1
cleaning: S
 GREENGUARD Certified®

MAYER FABRICS

customerservice@mayerfabrics.com | 800.428.4415

Hathaway • Additional Colors / Order Samples: culpcontract.com



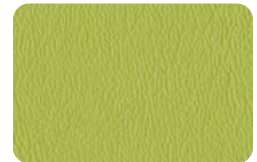
Tangerine



Lemon



Fire



Apple



Aqua



Ocean



Electric Blue



Cafe



Fog



Nickel

content: 100% Vinyl
finish: Antimicrobial
repeat: Non-Matching
durability: 100,000 Double Rubs
seam strength: 44 lbs. Warp / 53 lbs. Weft
flame retardance: UFAC/NFPA 260 Class 1, CAL 117-2013 Section 1
cleaning: W (Bleach Cleanable 5:1)

CULP CONTRACT

contract@culp.com | 336.888.6274

Linette • Additional Colors / Order Samples: culcontract.com

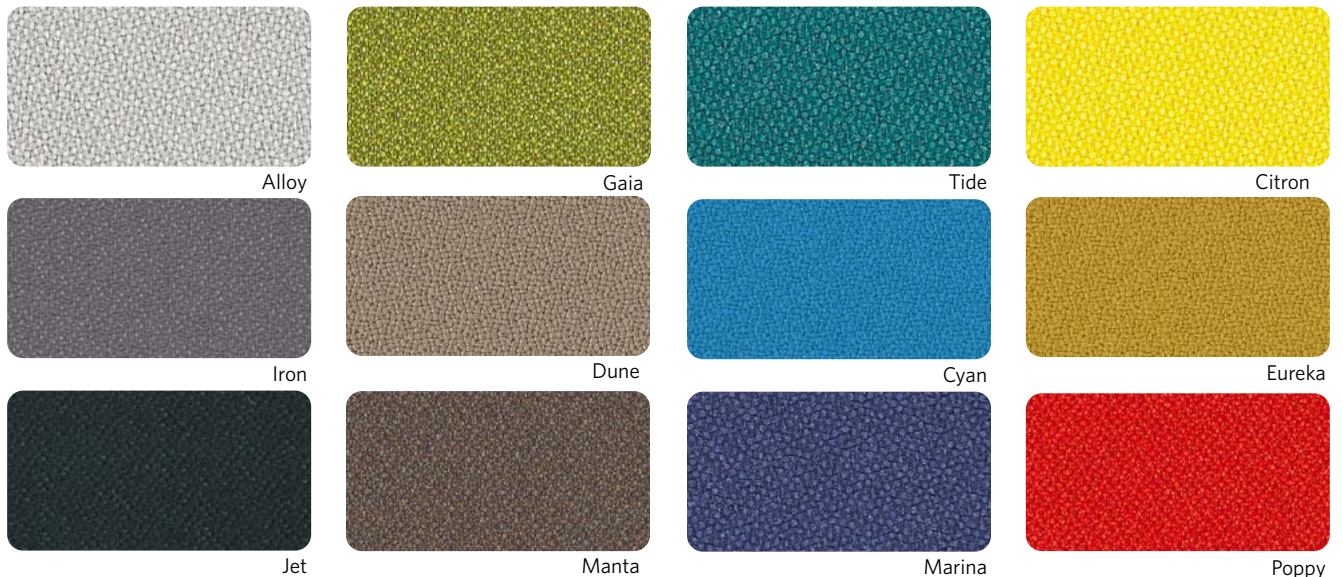


content: 100% Vinyl
finish: i-Clean™ Anti-Microbial
repeat: Non-Matching
durability: 100,000 Double Rubs
seam strength: 67 lbs. Warp / 69 lbs. Weft
flame retardance: UFAC/NFPA 260 Class 1, CAL 117-2013 Section 1
cleaning: **W** (Bleach Cleanable 5:1)

CULP CONTRACT

contract@culp.com | 336.888.6274

Origin • Additional Colors / Order Samples: momentumtextilesandwalls.com



content: 100% Post Consumer Recycled Polyester
repeat: Non-Matching
durability: 282,000 Double Rubs
seam slippage: 88 lbs. Warp / 79 lbs. Weft
flame retardance: UFAC/NFPA 260 Class 1, CAL 117-2013 Section 1
cleaning: **W S**

Reduced Environmental Impact; Recycled Fiber Content, GREENGUARD Gold Certified®, NSF 336 Compliant



MOMENTUM TEXTILES & WALLCOVERING

customerservice@momtex.com | 800.366.6839

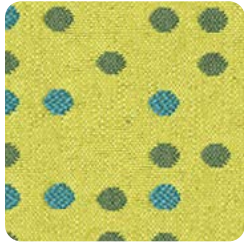
To ensure color accuracy, please order a memo sample. More info at hpfi.com/NOW.

grade 2

Punch Card • Additional Colors / Order Samples: culpcontract.com



Blue Jay



Citronelle



Red



Berry



Atlantic



Halo



Quartz



Dark Taupe



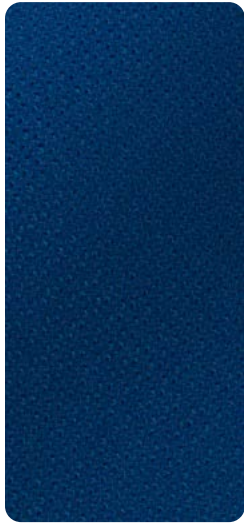
Shale

content: 61% Polyester, 39% Repreve® Recycled Polyester
repeat: 7.5" H, 11"V
durability: 40,000 Double Rubs
seam slippage: 40 lbs. Warp / 55 lbs. Weft
flame retardance: UFAC/NFPA 260 Class 1, CAL 117-2013 Section 1
cleaning: **W**

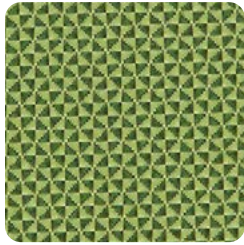
CULP CONTRACT

contract@culp.com | 336.888.6274

Quattro • Additional Colors / Order Samples: mayerfabrics.com



Skyway



Spring Green



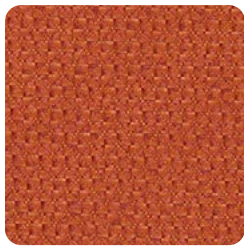
Hibiscus



Violet



Mallard



Umber



Pumice



Khaki



Granite

content: 100% Polyester
finish: Stain Repellent
repeat: Non-Matching
durability: 237,000 Double Rubs
seam slippage: 65 lbs. Warp / 91 lbs. Weft
flame retardance: UFAC/NFPA 260 Class 1, CAL 117-2013 Section 1
cleaning: **S**
GREENGUARD Certified®

MAYERFABRICS

customerservice@mayerfabrics.com | 800.428.4415

To ensure color accuracy, please order a memo sample. More info at hpf.com/NOW.

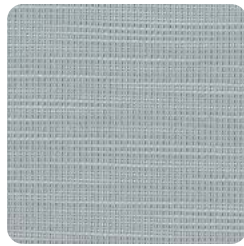
Ridgecrest • Additional Colors / Order Samples: culpcontract.com



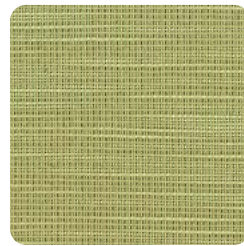
Bittersweet



Midnight



Tide Pool



Meadow



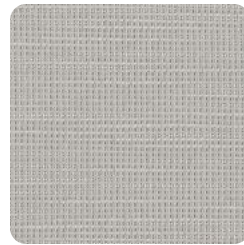
Ruby



Beach



Mink



Sterling



Ink

content: 100% Polyester
repeat: Non-Matching
durability: 100,000 Double Rubs
seam slippage: 88 lbs. Warp / 84 lbs. Weft
flame retardance: UFAC/NFPA 260 Class 1, CAL 117-2013 Section 1
cleaning: **W**

CULP CONTRACT

contract@culp.com | 336.888.6274

Utmost • Order Samples: culpcontract.com



Starfish



Night



Tropical



Clover



Plum



Natural



Fleece



Meteor



Iron

content: 30% Repreve Recycled Polyester, 70% Polyester
finish: i-Clean™ Stain & Moisture Repellent
repeat: 1" H, 1.25" V
durability: 95,000 Double Rubs
seam strength: 53 lbs. Warp / 56 lbs. Weft
flame retardance: UFAC/NFPA 260 Class 1, CAL 117-2013 Section 1
cleaning: **W**

CULP CONTRACT

contract@culp.com | 336.888.6274

Castillo

• Additional Colors / Order Samples: culcontract.com



Red



Clementine



Honeydew



Breezy



Batik



Buttercream



Buff



Metal



Steel

content: 100% Polyurethane with 87% Polyester, 13% cotton backing
finish: i-Clean™ Stain & Moisture Repellent
repeat: Non-Matching
durability: 200,000 Double Rubs
seam slippage: 31 lbs. Warp / 58 lbs. Weft
flame retardance: UFAC/NFPA 260 Class 1, CAL 117-2013 Section 1
cleaning: **W** (Bleach Cleanable 5:1)

CULP CONTRACT

contract@culp.com | 336.888.6274

Chronicle

• Additional Colors / Order Samples: culcontract.com



Raspberry



Persimmon



Cypress



Jade



Navy



Goldenrod



Wheat



Granite



Charcoal

content: 100% Polyester
finish: i-Clean™ Stain & Moisture Repellent
repeat: Non-Matching
durability: 95,000 Double Rubs
seam slippage: 100 lbs. Warp / 95 lbs. Weft
flame retardance: UFAC/NFPA 260 Class 1, CAL 117-2013 Section 1
cleaning: **W**

CULP CONTRACT

contract@culp.com | 336.888.6274

Connelly

• Order Samples: culpcontract.com • Pattern Scale Shown at 50%



Parrot



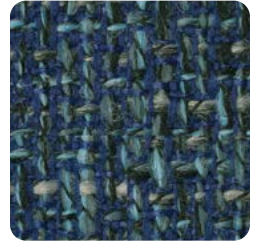
Chick



Peacock



Bluebird



Blue Jay



Wren



Dove



Owl



Crow

content: 100% Polyester
repeat: Non-Matching
durability: 95,000 Double Rubs
seam slippage: 45 lbs. Warp / 38 lbs. Weft
flame retardance: UFAC/NFPA 260 Class 1, CAL 117-2013 Section 1
cleaning: W

CULP CONTRACT

contract@culp.com | 336.888.6274

Ego

• Order Samples: momentumtextilesandwalls.com



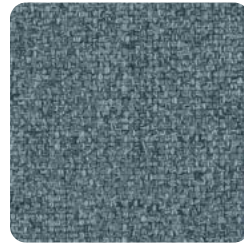
Ginger



Twig



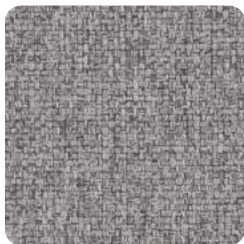
Jade



Spa



Midnight



Foil



Dove



Galena



Onyx

content: 85% Polyester, 15% Viscose Rayon
repeat: Non-Matching
durability: 250,000 Double Rubs
seam slippage: 67.8 lbs. Warp / 55.3 lbs. Weft
flame retardance: UFAC/NFPA 260 Class 1, CAL 117-2013 Section 1
cleaning: W S

Reduced Environmental Impact;
 GREENGUARD Certified®, NSF 336 Compliant



MOMENTUM
 TEXTILES & WALLCOVERING

customerservice@momtex.com | 800.366.6839

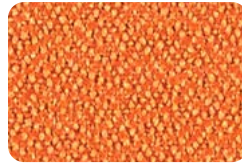
Foundation 10 • Additional Colors / Order Samples: mayerfabrics.com



Concord



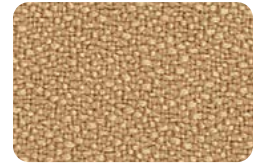
Flame



Marmalade



Ochre



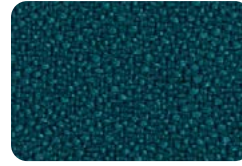
Buckskin



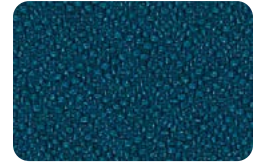
Sapphire



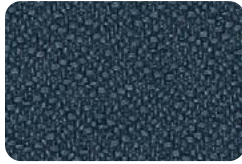
Aegean



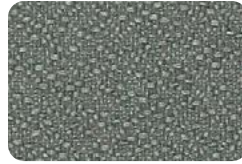
Ocean



Capri



Blue Mist



Mercury



Graphite



Ebony

content:

65% Pre Consumer Recycled Polyester,
35% Post Consumer Recycled Polyester
Stain Repellent

finish:

repeat:

Non-Matching

durability:

1,000,000 Double Rubs

seam slippage:

55 lbs. Warp / 52 lbs. Weft

flame retardance:

UFAC/NFPA 260 Class 1, CAL 117-2013 Section 1

cleaning:

W S

GREENGUARD Certified®

MAYERFABRICS

customerservice@mayerfabrics.com | 800.428.4415

Graph • Additional Colors / Order Samples: momentumtextilesandwalls.com



Lapis



Ruby



Poppy



Parrot



Cork



Wave



Tidal



Alpine



Coal

content:

75% Repreve Post Consumer Recycled Polyester,
25% Polyester

finish:

Non-Matching

repeat:

7.5" l x 3.375" w

durability:

170,000 Double Rubs

seam slippage:

100.7 lbs. Warp / 89.9 lbs. Weft

flame retardance:

UFAC/NFPA 260 Class 1, CAL 117-2013 Section 1

cleaning:

W S

Recycled Fiber Content; GREENGUARD Gold Certified®



MOMENTUM
TEXTILES & WALLCOVERING

customerservice@momtex.com | 800.366.6839

Rumba • Additional Colors / Order Samples: mayerfabrics.com • Pattern Scale Shown at 50%



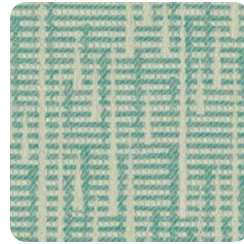
Cinnabar



Butterscotch



Lime



Spa



Cobalt



Bisque



Abalone



Fossil



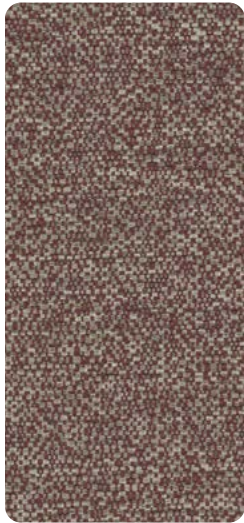
Char

content: 100% Polyester
finish: PFAS-Free Stain Repellent
repeat: 3.7" H, 6.625" V
durability: 55,000 Double Rubs
seam slippage: 87.0 lbs. Warp / 44.0 lbs. Weft
flame retardance: UFAC/NFPA 260 Class 1, CAL 117-2013 Section 1
cleaning: S

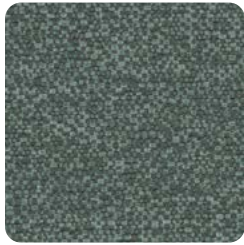
MAYERFABRICS

customerservice@mayerfabrics.com | 800.428.4415

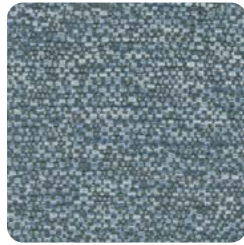
Scatter • Order Samples: momentumtextilesandwalls.com



Garnet



Spruce



Baltic



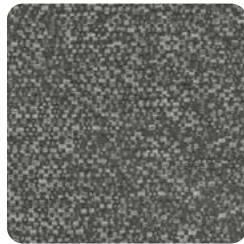
Caspian



Barley



Fossil



Pewter



Flint



Noir

content: 78% Polyester, 22% Post Consumer Recycled Polyester
repeat: Non-Matching
durability: 90,000 Double Rubs
seam slippage: 57.0 lbs. Warp / 50.8 lbs. Weft
flame retardance: UFAC/NFPA 260 Class 1, CAL 117-2013 Section 1
cleaning: W S

Reduced Environmental Impact ; Recycled Fiber Content, GREENGUARD Certified®, NSF 336 Compliant



MOMENTUM
 TEXTILES & WALLCOVERING

customerservice@momtex.com | 800.366.6839

To ensure color accuracy, please order a memo sample. More info at hpfi.com/NOW.

grade 3

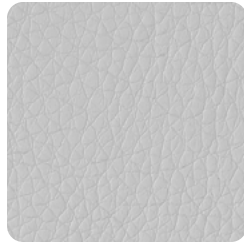
Staple • Additional Colors / Order Samples: cfstinson.com



Paprika



Camel



Mist



Twilight



Voyage



Malt



Smith



Academy



Nautical

content:

100% Polyurethane (polycarbonate & Polyester resins, Polyester, cotton backing)

finish:

enhanced soil and stain resistance

durability:

200,000 Double Rubs

seam strength:

61 lbs. Warp / 81 lbs. Weft

flame retardance:

UFAC/NFPA 260 Class 1, CAL 117-2013 Section 1

cleaning:

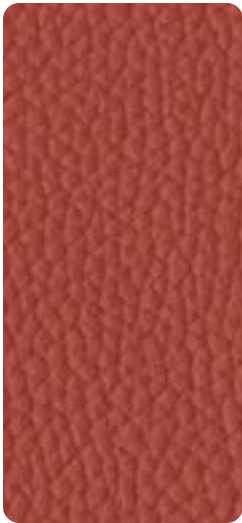
W S (Bleach Cleanable 4:1)

Reduced Environmental Impact

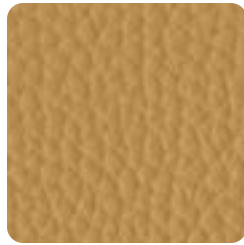
Stinson®

customerrelations@cfstinson.com | 800.841.6279

Viceroy • Additional Colors / Order Samples: culcontract.com



Bravado



Gold



Winter



Mushroom



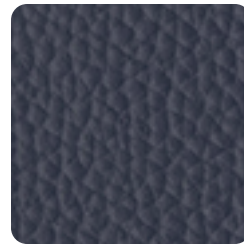
Charcoal



Bordeaux



Peacock



Ocean



Spruce

content:

100% Polyurethane (Polycarbonate), Polyester Backing)

finish:

Antimicrobial

repeat:

Non-Matching

durability:

200,000 Double Rubs

seam slippage:

42 lbs. Warp / 71 lbs. Weft

flame retardance:

UFAC/NFPA 260 Class 1, CAL 117-2013 Section 1

cleaning:

W S

CULP CONTRACT

contract@culp.com | 336.888.6274

To ensure color accuracy, please order a memo sample. More info at hpfi.com/NOW.

grade **4**

Apprentice • Additional Colors / Order Samples: cfstinson.com • Pattern Scale Shown at 50%



Mystic



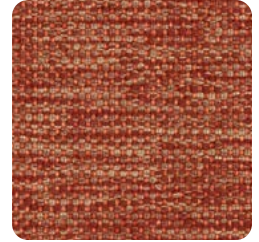
Eucalyptus



Heron



Sisal



Ember



Classic



Phantom



Surfer




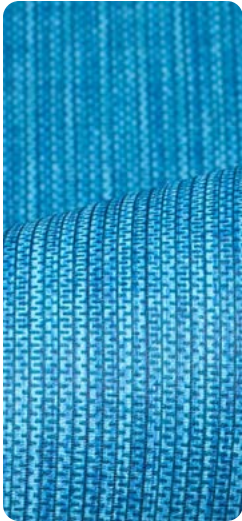
Raven

content: 100% Polypropylene
finish: None
repeat: Non-Matching
durability: 90,000 Double Rubs
seam strength: 66.0 lbs. Warp / 74.0 lbs. Weft
flame retardance: UFAC/NFPA 260 Class 1, CAL 117-2013 Section 1
cleaning: **W S** (Bleach Cleanable 19:1)
GREENGUARD Gold Certified®

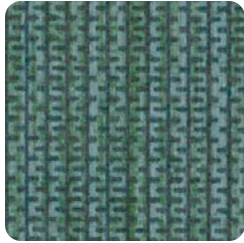
Stinson®

customerrelations@cfstinson.com | 800.841.6279

Box Chain  • Additional Colors / Order Samples: cfstinson.com



Amalfi



Evergreen



Pomelo



Stucco



Rose



Frost



Antelope



Stardust



Beluga

content: Vinyl Surface with Polyester Backing
finish: Advanced Soil and Stain Resistant Top Coat
repeat: Non-Matching
durability: 100,000 Double Rubs
seam strength: 46 lbs. Warp / 35 lbs. Weft
flame retardance: UFAC/NFPA 260 Class 1, CAL 117-2013 Section 1
cleaning: **W** (Bleach Cleanable 9:1)
GREENGUARD Certified®

Stinson®

customerrelations@cfstinson.com | 800.841.6279

To ensure color accuracy, please order a memo sample. More info at hpfi.com/NOW.

grade 4

Fedora • Additional Colors / Order Samples: mayerfabrics.com



Winter



Topaz



Tangelo



Tomato



Persimmon



Opal



Aegean



Indigo



Cactus



Light Grey



Fawn



Pewter



Charcoal

content: 100% Polyester
finish: Non-PFOA Stain Repellant
repeat: Non-Matching
durability: 100,000 Double Rubs
seam slippage: 106.1 lbs. Warp / 109.2 lbs. Weft
flame retardance: UFAC/NFPA 260 Class 1, CAL 117-2013 Section 1
cleaning: **W**
GREENGUARD Certified®

MAYER FABRICS

customerservice@mayerfabrics.com | 800.428.4415

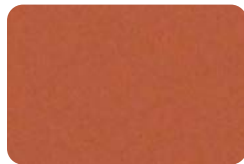
Golly • Additional Colors / Order Samples: culpcontract.com



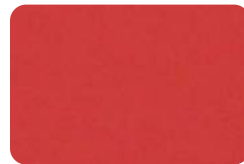
Bisque



Brass



Armagnac



Red



Paprika



Tidepool



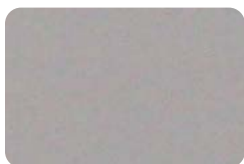
Turquoise



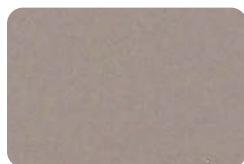
Waterloo



Rosemary



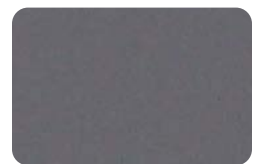
Silver



Porcini



Neutral



Urbane

content: 100% Polyurethane (Polycarbonate), Polyester Backing)
repeat: Non-Matching
durability: 195,000 Double Rubs
seam slippage: 70 lbs. Warp / 44 lbs. Weft
flame retardance: UFAC/NFPA 260 Class 1, CAL 117-2013 Section 1
cleaning: **W S** (Bleach Cleanable 5:1)

CULP CONTRACT

contract@culp.com | 336.888.6274

To ensure color accuracy, please order a memo sample. More info at hphi.com/NOW.

grade 4

Haute

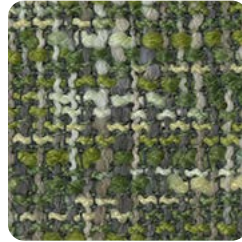
• Order Samples: culpcontract.com



Sanderling



Foggy



Kelp



Autumn



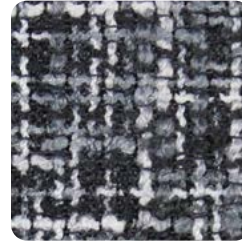
Weathered



Toadstool



Caviar



Char



Night Light

content: 100% Polyester
repeat: Non-Matching
durability: 95,000 Double Rubs
seam slippage: 60 lbs. Warp / 71 lbs. Weft
flame retardance: UFAC/NFPA 260 Class 1, CAL 117-2013 Section 1
cleaning: **W**

CULP CONTRACT

contract@culp.com | 336.888.6274

Lara



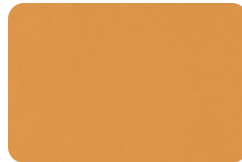
• Additional Colors / Order Samples: cfstinson.com



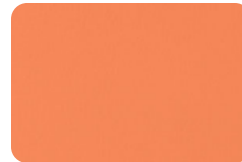
Cashew



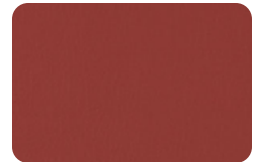
Marigold



Miso



Marmalade



Port



Tranquil



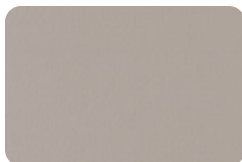
Patriot



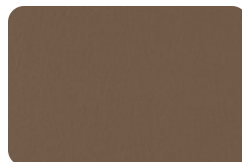
Wizard



Sherwood



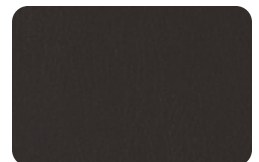
Gate



Mink



Kitten



Pitch

content: Non-Phthalate Vinyl Surface with Polyester Backing
finish: Advanced Soil and Stain Resistant Top Coat
repeat: Non-Matching / Directional
durability: Exceeds 1,300,000 Double Rubs
seam slippage: 35 lbs. Warp / 30 lbs. Weft
flame retardance: UFAC/NFPA 260 Class 1, CAL 117-2013 Section 1
cleaning: **W** (Bleach Cleanable 9:1)
GREENGUARD Certified®

Stinson®

customerrelations@cfstinson.com | 800.841.6279

To ensure color accuracy, please order a memo sample. More info at hpfi.com/NOW.

grade **4**

Moby • Additional Colors / Order Samples: cfstinson.com



Lichen



Poppy



Cardinal



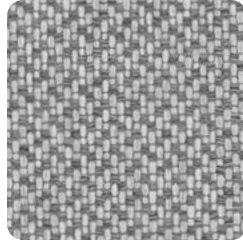
Surf



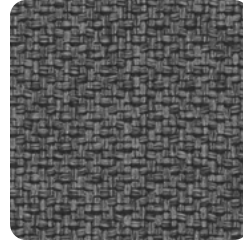
Stream



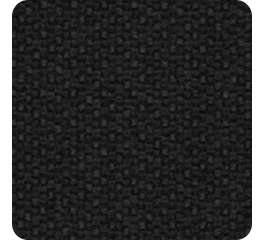
Cloud



Gull



Vesper



Black

content: 100% Polyester
finish: Non-PFOA Stain Resistant
repeat: Non-Matching
durability: 100,000 Double Rubs
seam strength: 87.2 lbs. Warp / 68.5 lbs. Weft
flame retardance: UFAC/NFPA 260 Class 1, CAL 117-2013 Section 1
cleaning: **W**
GREENGUARD Gold Certified®

Stinson®

customerrelations@cfstinson.com | 800.841.6279

Tango • Additional Colors / Order Samples: mayerfabrics.com • *Pattern Scale Shown at 50%*



Harbor



Coral



Sangria



Limeade



Surfside



Sunrise



Raspberry



Flint



Skyline

content: 100% Polyester
finish: PFOA & PFOS-free stain repellent
repeat: 4.8" l x 4.8" w
durability: 80,000 Double Rubs
seam slippage: 96 lbs. Warp / 84 lbs. Weft
flame retardance: UFAC/NFPA 260 Class 1, CAL 117-2013 Section 1
cleaning: **S**
GREENGUARD Gold Certified®

MAYERFABRICS

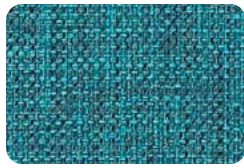
customerservice@mayerfabrics.com | 800.428.4415

Cover Cloth

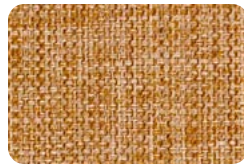
• Additional Colors / Order Samples: momentumtextilesandwalls.com



Fuchsia



Cyan



Antique



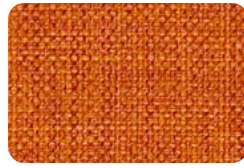
Oat



Platinum



Indigo



Navel



Taupe



Vesper



Bouquet



Flame



Coffee



Graphite

content:

56% Repreve® Post Consumer Recycled Polyester,
44% Polyester

finish:

Crypton Green®

repeat:

Non-Matching

durability:

200,000 Double Rubs

seam slippage:

71 lbs. Warp / 49 lbs. Weft

flame retardance:

UFAC/NFPA 260 class 1, CAL 117-2013 Section 1

cleaning:

W (Bleach Cleanable 9:1)

Recycled Fiber Content; GREENGUARD Gold Certified®



MOMENTUM
TEXTILES & WALLCOVERING

customerservice@momtex.com | 800.366.6839

Delano

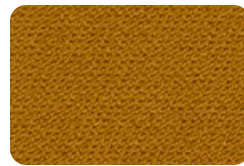
• Additional Colors / Order Samples: mayerfabrics.com



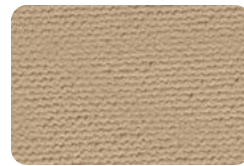
Wildberry



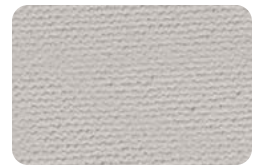
Aegean



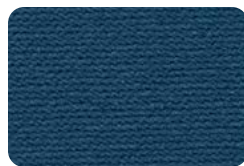
Topaz



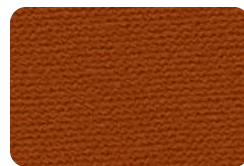
Almond



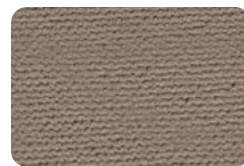
Silver



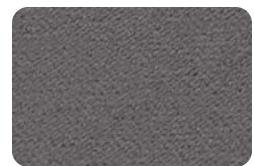
Maritime



Bittersweet



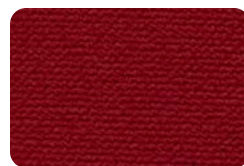
Burnish



Pewter



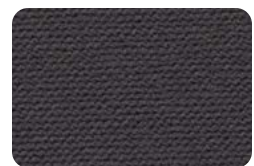
Hyacinth



Cherry



Mink



Iron

content:

100% Polyester

finish:

Stain Repellent, PFAS-Free

repeat:

Non-Matching

durability:

100,000 Double Rubs

seam strength:

77.4 lbs. Warp / 71.4 lbs. Weft

flame retardance:

UFAC/NFPA 260 Class 1, CAL 117-2013 Section 1

cleaning:

S

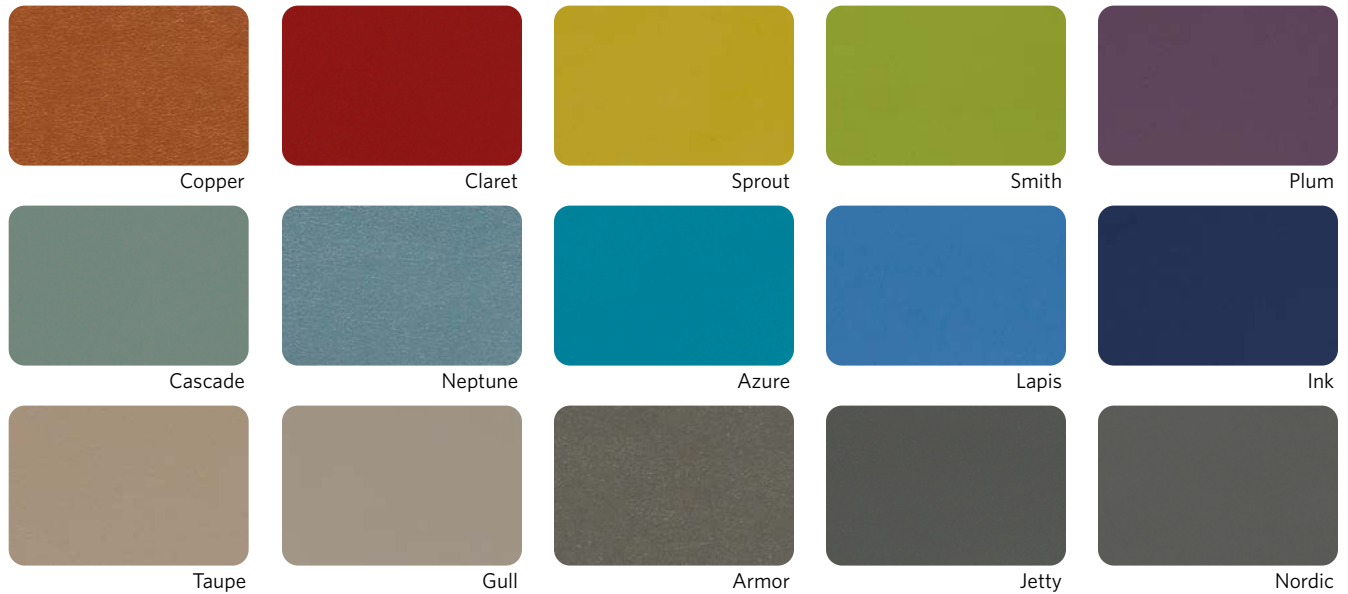
Reduced Environmental Impact; GREENGUARD Gold

MAYERFABRICS

customerservice@mayerfabrics.com | 800.428.4415

To ensure color accuracy, please order a memo sample. More info at hpfi.com/NOW.

Endurance EPU • Additional Colors / Order Samples: momentumtextilesandwalls.com



content: 100% EPU Polyurethane
repeat: Non-Matching
durability: 1,000,000 Double Rubs
seam strength: 100 lbs. Warp / 95.4 lbs. Weft
flame retardance: UFAC/NFPA 260 Class 1, CAL 117-2013 Section 1, IMO Part 8
cleaning: **W** (Bleach Cleanable 4:1)
 Reduced Environmental Impact; GREENGUARD Certified®
 PVC Free

 **MOMENTUM**
 TEXTILES & WALLCOVERING
customerservice@momtex.com | 800.366.6839

Evo CV • Additional Colors / Order Samples: momentumtextilesandwalls.com



content: 100% Clean Vinyl / Phthalate Free
finish: Protective Overcoat®
repeat: Non-Matching
durability: 1,000,000 Double Rubs
seam strength: 80.1 lbs. Warp / 68 lbs. Weft
flame retardance: UFAC/NFPA 260 Class 1, CAL 117-2013 Section 1, IMO Part 8
cleaning: **W S** (Bleach Cleanable 10:1)
 GREENGUARD Certified®

 **MOMENTUM**
 TEXTILES & WALLCOVERING
customerservice@momtex.com | 800.366.6839

To ensure color accuracy, please order a memo sample. More info at hpf.com/NOW.

grade **5**

Flanders 

• Additional Colors / Order Samples: cfstinson.com



Shore



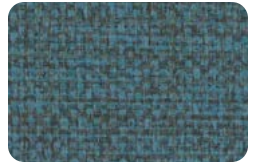
Ginger



Lifesaver



Salsa



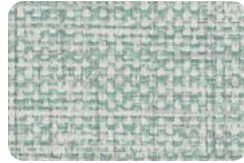
Voyage



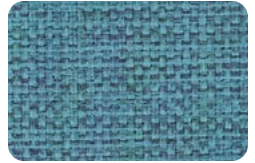
Gecko



Hula



Seaside



Bermuda



Tiki



Slate



Charcoal



Cocoa

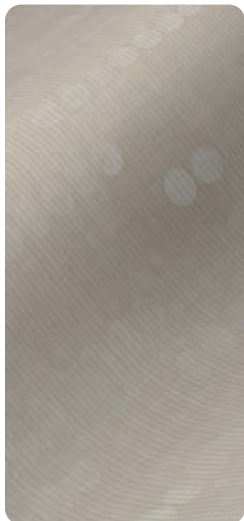
content: 100% Vinyl with Polyester Backing
finish: Advanced Soil & Stain Resistant Top Coat
repeat: Non-Matching
durability: 250,000 Double Rubs
seam slippage: 58.5 lbs. Warp / 46.2 lbs. Weft
flame retardance: UFAC/NFPA 260 Class 1, CAL 117-2013 Section 1
cleaning: **W S** (Bleach Cleanable 9:1)
GREENGUARD Certified®

Stinson®

customerrelations@cfstinson.com | 800.841.6279

Gala 

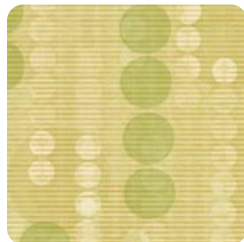
• Order Samples: mayerfabrics.com • Pattern Scale Shown at 50%



Quartz



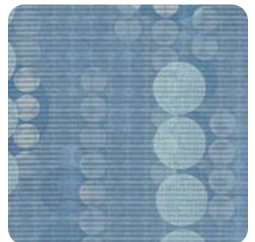
Honeycomb



Limelight



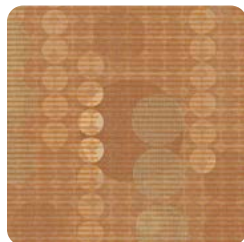
Skipper



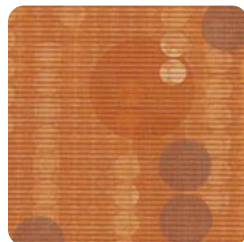
Aquamarine



Bronze



Spice



Sunset



Truffle

content: Vinyl with Urethane Top Coat
finish: SILVERGUARD® and PERMABLOK³®
repeat: 18.0" H, 18.0" V
durability: 100,000 Double Rubs
seam strength: 109 lbs. Warp / 72 lbs. Weft
flame retardance: UFAC/NFPA 260 Class 1, CAL 117-2013 Section 1
cleaning: **W S CFC** (Bleach Cleanable 4:1)

MAYERFABRICS

customerservice@mayerfabrics.com | 800.428.4415

To ensure color accuracy, please order a memo sample. More info at hpfi.com/NOW.

grade **5**

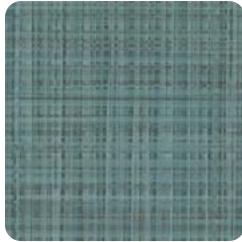
Lattice  • Order Samples: cfstinson.com • Pattern Scale Shown at 50%



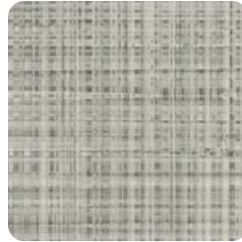
Fresco



Rosewood



Bayou



Sage



Buckwheat



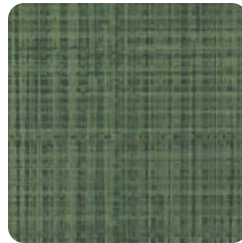
Goldfinch



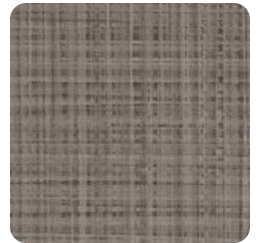
Clay



Skipper



Grove




Metro

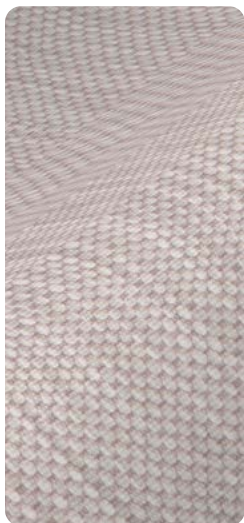
content:
finish:
repeat:
durability:
seam strength:
flame retardance:
cleaning:

Non-Phthalate Vinyl Surface with Polyester Backing
Advanced Soil and Stain Resistant Top Coat
18" H x 18" V, Non-Matching / Directional
Exceeds 1,300,000 Double Rubs
35 lbs. Warp / 30 lbs. Weft
UFAC/NFPA 260 Class 1, CAL 117-2013 Section 1
W (Bleach Cleanable 9:1)
GREENGUARD Certified

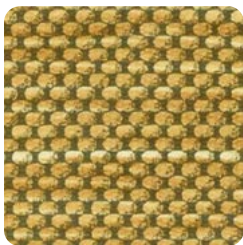
Stinson[®]

customerrelations@cfstinson.com | 800.841.6279

Midway  • Additional Colors / Order Samples: mayerfabrics.com



Sand



Sunshine



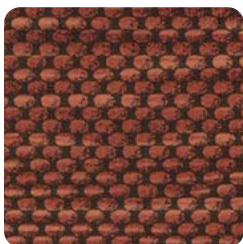
Haze



Spa



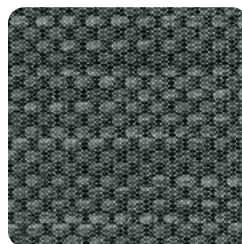
Wheat



Persimmon



Indigo



Algae



Storm

content:
finish:
repeat:
durability:
seam strength:
flame retardance:
cleaning:

80% Phthalate-Free Vinyl Facing,
20% Polyester Backing
Soil & Stain Resistant Top Coat with Ink-Resistance
18" H, 18" V
1,300,000 Double Rubs
35 lbs. Warp / 30 lbs. Weft
UFAC/NFPA 260 class 1, CAL 117-2013 Section 1
W CFC (Bleach Cleanable 4:1)
GREENGUARD Certified[®]

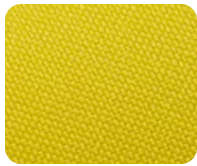
MAYERFABRICS

customerservice@mayerfabrics.com | 800.428.4415

Silverweave



• Additional Colors / Order Samples: mayerfabrics.com



Daylily



Poppy



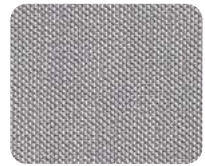
Willow



Cobalt



Camel



Pewter



Bittersweet



Cranberry



Lime



Calypso



Doe



Zinc



Amber



Eggplant



Jade



Indigo



Cocoa



Graphite

content:

finish:

repeat:

durability:

seam strength:

flame retardance:

cleaning:

Vinyl with Urethane Top Coat

Soil & Stain Resistant Top Coat

Non-Matching

100,000 Double Rubs

46 lbs. Warp / 35 lbs. Weft

UFAC/NFPA 260 Class 1, CAL 117-2013 Section 1

CFC BC (Bleach Cleanable 9:1)

MAYERFABRICS

customerservice@mayerfabrics.com | 800.428.4415

Vista NFR



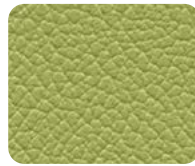
• Additional Colors / Order Samples: omnova.com



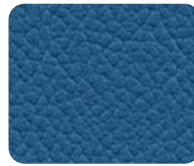
Dijon



Cardinal



Chervil



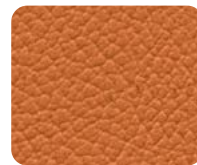
Azure



Sandstone



Shale



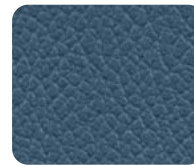
Seville



Flamenco



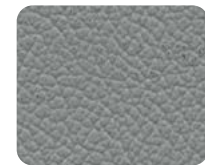
Keylime



Sprite



Portobello



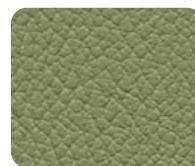
City Grey



Nutmeg



Empire



Aloe



Huron



Grounded



Licorice

content:

finish:

repeat:

durability:

seam strength:

flame retardance:

cleaning:

100% Vinyl with Polyester Backing

PreFixx Soil & Stain Resistant Top Coat

Non-Matching

1,300,000 Double Rubs

40 lbs. Warp / 40 lbs. Weft

UFAC/NFPA 260 Class 1, CAL 117-2013 Section 1

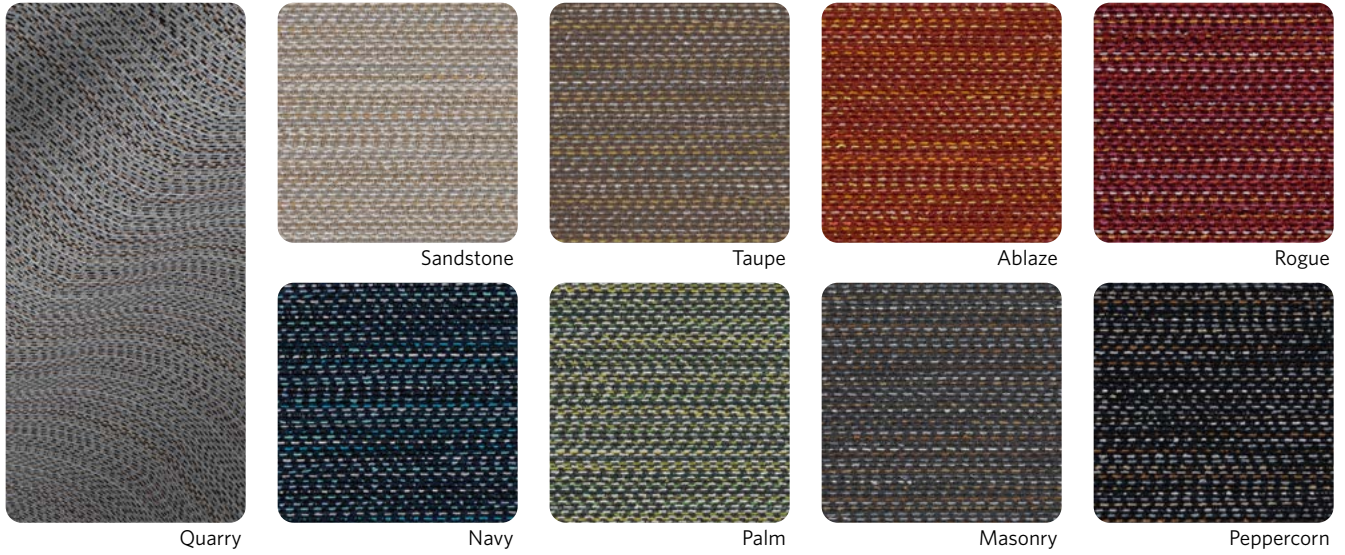
CFC BC (Bleach Cleanable 9:1)

OMNOVA

A Division of **SURTECO**

[online contact form](#) | 800.457.9900

Beaux • Additional Colors / Order Samples: mayerfabrics.com • Pattern Scale Shown at 50%



content: 100% Post Consumer Recycled Polyester
finish: PFAS-Free Stain Repellent
repeat: .188" H, 1.813" V
durability: 100,000 Double Rubs
seam strength: 29 lbs. Warp / 73 lbs. Weft
flame retardance: UFAC/NFPA 260 Class 1, CAL 117-2013 Section 1
cleaning: **W S BC** (Bleach Cleanable 9:1)

MAYERFABRICS

customerservice@mayerfabrics.com | 800.428.4415

Criss Cross 2.0 • Additional Colors / Order Samples: cfstinson.com • Pattern Scale Shown at 50%



content: Non-Phthalate Vinyl Surface with Polyester Backing
finish: Advanced Soil and Stain Resistant Top Coat
repeat: Non-Matching / Directional
durability: Exceeds 500,000 Double Rubs
seam strength: 60 lbs. Warp / 40 lbs. Weft
flame retardance: UFAC/NFPA 260 Class 1, CAL 117-2013 Section 1
cleaning: **W S** (Bleach Cleanable 9:1)
GREENGUARD Certified®

Stinson®

customerrelations@cfstinson.com | 800.841.6279

Dexter EPU • Additional Colors / Order Samples: momentumtextilesandwalls.com



Haute



Truffle



Fresco



Tango



Fig



Splash



Baltic



Pumice



Flint

content: 100% EPU Polyurethane
repeat: 9.5" H, 20" V
durability: 285,000 Double Rubs
seam slippage: 61.8 lbs. Warp / 57.5 lbs. Weft
flame retardance: UFAC/NFPA 260 Class 1, CAL 117-2013, IMO Part 8
cleaning: **W** (Bleach Cleanable 4:1)
GREENGUARD Certified®



MOMENTUM
 TEXTILES & WALLCOVERING

customerservice@momtex.com | 800.366.6839

Honeycomb Shag • Order Samples: cfstinson.com • Pattern Scale Shown at 25%



Iconic



Sunstone



Papaya



Salsa



Teal



Champion



Tint



Shale

content: 63% Polyester, 37% Olefin
finish: Non-PFOA Stain Resistant
repeat: 14.5" H, 15.75" V
durability: 81,000 Double Rubs
seam slippage: 96 lbs. Warp / 71 lbs. Weft
flame retardance: UFAC/NFPA 260 Class 1, CAL 117-2013 Section 1
cleaning: **W S** (Bleach Cleanable 9:1)
GREENGUARD Gold Certified®

Stinson®

customerrelations@cfstinson.com | 800.841.6279

Hopsack

Additional Colors / Order Samples: cfstinson.com



Bamboo



Bahama



Cori



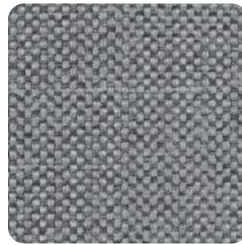
Fjord



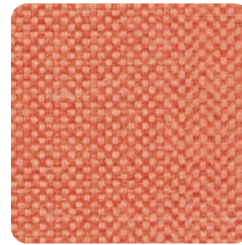
Willow



Alloy



Carbon



Koi



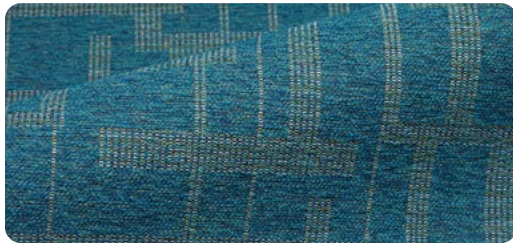
Cinnabar

content: 100% Vinyl Face with 100% Polyester Backing
finish: Advanced Soil & Stain Resistant Top Coat
repeat: Non-Matching
durability: 100,000 Double Rubs
seam slippage: 46 lbs. Warp / 35 lbs. Weft
flame retardance: UFAC/NFPA 260 Class 1, CAL 117-2013 Section 1
cleaning: **W** (Bleach Cleanable 9:1)
GREENGUARD Certified®

Stinson®

customerrelations@cfstinson.com | 800.841.6279

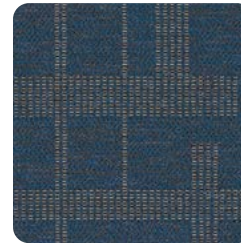
Roadmap • Order Samples: cfstinson.com • Pattern Scale Shown at 25%



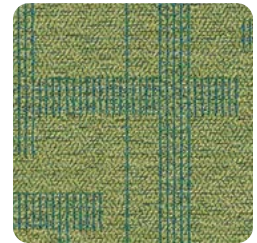
Wave



Haze



Smart



Mambo



Sketch



Gotham



Tropic



Kiss

content: 80% Post-Consumer Recycled Polyester, 20% Polyester
finish: Non-Fluorine Stain Resistant
repeat: 13.75" H, 18.25" V
durability: 75,000 Double Rubs
seam slippage: 98.2 lbs. Warp / 94.4 lbs. Weft
flame retardance: UFAC/NFPA 260 Class 1, CAL 117-2013 Section 1
cleaning: **W S** (Bleach Cleanable 9:1)
GREENGUARD Gold Certified®

Stinson®

customerrelations@cfstinson.com | 800.841.6279

To ensure color accuracy, please order a memo sample. More info at hpf.com/NOW.

grade 6

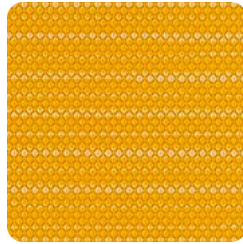
Row • Additional Colors / Order Samples: momentumtextilesandwalls.com



Wheat



Shale



Marigold



Waltz



Sage



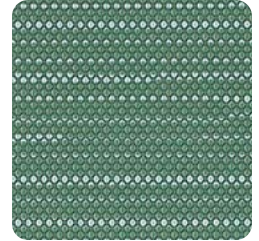
Coffee



Auburn



Fjord



Willow

content: 100% Polyurethane / PVC Free
repeat: Non-Matching
durability: 500,000 Double Rubs
seam slippage: 110 lbs. Warp / 84 lbs. Weft
flame retardance: UFAC/NFPA 260 Class 1, CAL 117-2013 Section 1
cleaning: **W** (Bleach Cleanable 4:1)
GREENGUARD Certified® PVC Free



MOMENTUM
 TEXTILES & WALLCOVERING

customerservice@momtex.com | 800.366.6839

Scout • Additional Colors / Order Samples: mayerfabrics.com • Pattern Scale Shown at 50%



Flax



Steel



Brass



Sky



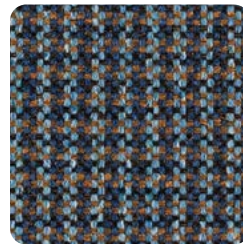
Shamrock



Earth



Campfire



Anchor



Everglade

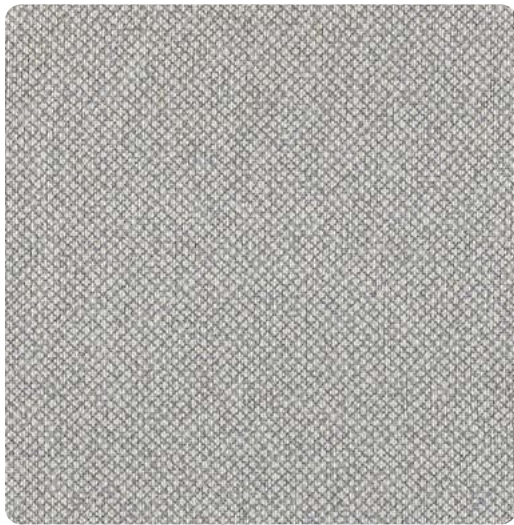
content: 91% Polyester, 7% Polyurethane, 2% Silicone
finish: Supreen (Silicone)
repeat: 0.275" H, 0.275" V
durability: 100,000 Double Rubs
seam slippage: 88.5 lbs. Warp / 89.5 lbs. Weft
flame retardance: UFAC/NFPA 260 Class 1, CAL 117-2013 Section 1
cleaning: **W S BC** (Bleach Cleanable 9:1)
GREENGUARD Certified®

MAYERFABRICS

customerservice@mayerfabrics.com | 800.428.4415

To ensure color accuracy, please order a memo sample. More info at hphi.com/NOW.

Tribeca CV • Additional Colors / Order Samples: momentumtextilesandwalls.com



Cloud



Cane



Rubine



Lichen



Airy



Mariner



Plume

content: 100% Clean Vinyl / Phthalate Free
finish: Protective Overcoat®
repeat: Non-Matching
durability: 100,000 Double Rubs
seam slippage: 42 lbs. Warp / 46 lbs. Weft
flame retardance: UFAC/NFPA 260 Class 1, CAL 117-2013 Section 1, IMO Part 8
cleaning: **W** (Bleach Cleanable 10:1)
GREENGUARD Certified® PVC Free



MOMENTUM
 TEXTILES & WALLCOVERING

customerservice@momtex.com | 800.366.6839

Vanguard CV • Additional Colors / Order Samples: momentumtextilesandwalls.com



French



Cream



Autumn



Sprout



Calico



Polaris



Spruce

content: 100% Clean Vinyl / Phthalate Free
finish: Protective Overcoat®
repeat: Non-Matching
durability: 100,000 Double Rubs
seam slippage: 42 lbs. Warp / 46 lbs. Weft
flame retardance: UFAC/NFPA 260 Class 1, CAL 117-2013 Section 1, IMO Part 8
cleaning: **W** (Bleach Cleanable 10:1)
GREENGUARD Certified® PVC Free



MOMENTUM
 TEXTILES & WALLCOVERING

customerservice@momtex.com | 800.366.6839

To ensure color accuracy, please order a memo sample. More info at hpf.com/NOW.

grade **7**

Caspian • Additional Colors / Order Samples: mayerfabrics.com • Pattern Scale Shown at 50%



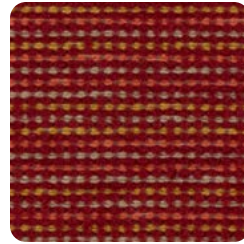
Jungle



Spring



Tangelo



Sunset



Marine



Almond



Mineral



Mushroom



Cinder

content: 76% Polyester/24% SEAQUAL® (Post-Consumer Recycled Polyester)
finish: PFAS-Free Stain Repellent
repeat: 0.125" H, 2.5" V
durability: 100,000 Double Rubs
seam slippage: 89.0 lbs. Warp / 125.0 lbs. Weft
flame retardance: UFAC/NFPA 260 Class 1, CAL 117-2013 Section 1
cleaning: **W S BC** (Bleach Cleanable 9:1)

MAYERFABRICS

customerservice@mayerfabrics.com | 800.428.4415

Level  • Order Samples: cfstinson.com • Pattern Scale Shown at 50%



Mojito



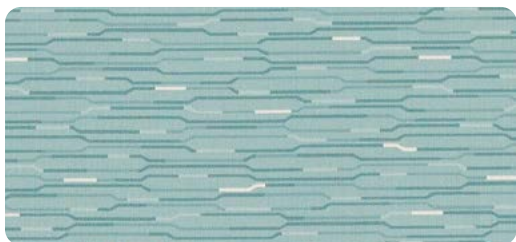
Bavaria



Slate



Earth



Aegean



Lapis



Tea



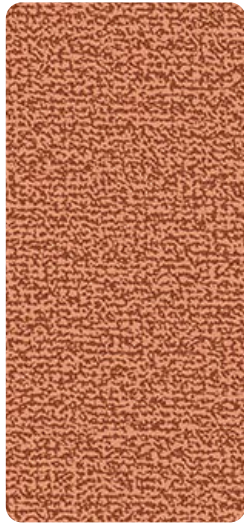
Shadow

content: Vinyl Surface with Polyester Backing
finish: Advanced Soil & Stain Resistant Top Coat
repeat: 4.625" H, 8.625" V
durability: 1,300,000 Double Rubs
seam slippage: 35 lbs. Warp / 30 lbs. Weft
flame retardance: UFAC/NFPA 260 Class 1, CAL 117-2013 Section 1
cleaning: **W** (Bleach Cleanable 9:1)
GREENGUARD Certified®

Stinson®

customerrelations@cfstinson.com | 800.841.6279

Mixer EPU • Additional Colors / Order Samples: momentumtextilesandwalls.com



Sunset



Golden Hour



Vermillion



Clover



Cove



Sugar



Pewter



Tidal



Basalt

content: 100% EPU Polyurethane
repeat: Non-Matching
durability: 130,000 Double Rubs
seam slippage: 64.5 lbs. Warp / 57.6 lbs. Weft
flame retardance: UFAC/NFPA 260 Class 1, CAL 117-2013
cleaning: **W S** (Bleach Cleanable 4:1)
GREENGUARD Certified®



MOMENTUM
 TEXTILES & WALLCOVERING

customerservice@momtex.com | 800.366.6839

Mixology CV • Additional Colors / Order Samples: momentumtextilesandwalls.com



Fresco



Tea Leaf



Bamboo



Cascade



Bluet



Chalice



Grotto



Chambray



Nightlife

content: 100% Clean Vinyl / Phthalate Free
finish: Protective Overcoat®
repeat: 27" H, 0.125" V
durability: 250,000 Double Rubs
seam slippage: 100.6 lbs. Warp / 101.9 lbs. Weft
flame retardance: UFAC/NFPA 260 Class 1, CAL 117-2013, IMO Part 8
cleaning: **W S** (Bleach Cleanable 10:1)
GREENGUARD Gold Certified®



MOMENTUM
 TEXTILES & WALLCOVERING

customerservice@momtex.com | 800.366.6839

To ensure color accuracy, please order a memo sample. More info at hpfi.com/NOW.

grade 7

Sentiero 

• Order Samples: cfstinson.com • Pattern Scale Shown at 25%



Kiwi



Arancione



Aqua



Azzuro



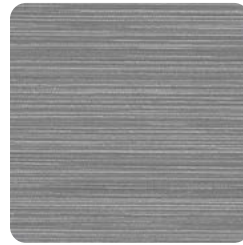
Blu Scuro



Lido



Silk



Stella



Marrone

content:
finish:
repeat:
durability:
seam slippage:
flame retardance:
cleaning:

Non-Phthalate Vinyl Surface, Recycled Polyester Backing
Advance Soil and Stain Resistant Top Coat
Directional, Non-Matching
100,000 Double Rubs
46.0 lbs. Warp / 35.0 lbs. Weft
UFAC/NFPA 260 Class 1, CAL 117-2013
W S (Bleach Cleanable 10:1)
GREENGUARD Gold Certified®

Stinson®

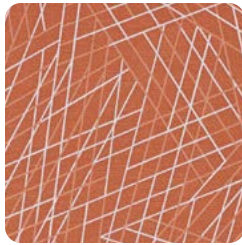
customerrelations@cfstinson.com | 800.841.6279

Vector 

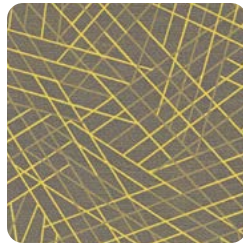
• Order Samples: cfstinson.com • Pattern Scale Shown at 25%



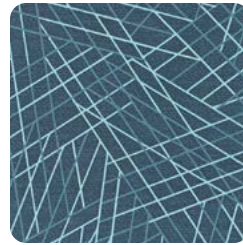
Lime



Spice



Segment



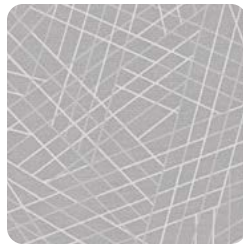
Parallel



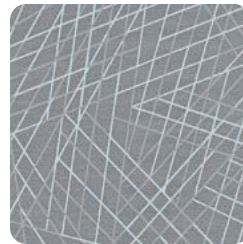
Blue



Suede



Angle



Ray



Intersect

content:
finish:

repeat:
durability:
seam slippage:
flame retardance:
cleaning:

Phthalate-Free Vinyl Face with Polyester Backing
Advanced Soil and Stain Resistant Top Coat + Ink Resistance
11.25" H, 11.875" V
100,000 Double Rubs
46 lbs. Warp / 35 lbs. Weft
UFAC/NFPA 260 Class 1, CAL 117-2013 Section 1
W S BC (Bleach Cleanable 9:1)
GREENGUARD Certified®

Stinson®

customerrelations@cfstinson.com | 800.841.6279

To ensure color accuracy, please order a memo sample. More info at hpfi.com/NOW.

Arc • Additional Colors / Order Samples: mayerfabrics.com • Pattern Scale Shown at 25%



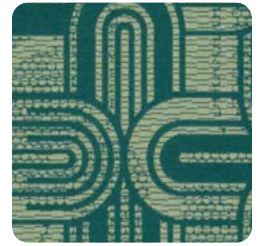
Turquoise



Sapphire



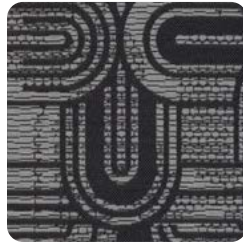
Topaz



Emerald



Granite



Steel



Limestone



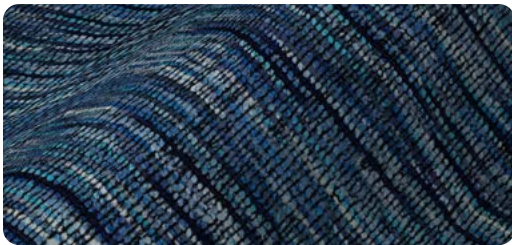
Fig

content: 100% Post Consumer Recycled Polyester
finish: PFAS-Free Stain Repellent
repeat: 7.25" H, 11.75" V
durability: 60,000 Double Rubs
seam strength: 87.0 lbs. Warp / 96.0 lbs. Weft
flame retardance: UFAC/NFPA 260 Class 1, CAL 117-2013 Section 1
cleaning: **W S BC** (Bleach Cleanable 9:1)

MAYERFABRICS

customerservice@mayerfabrics.com | 800.428.4415

Curator • Additional Colors / Order Samples: mayerfabrics.com • Pattern Scale Shown at 50%



Ink



Mulberry



Umber



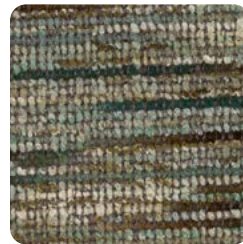
Juniper



Metal



Onyx



Spearmint



Ruby

content: 100% Polyester
finish: Crypton® with Antimicrobial Silver Ion Technology
repeat: Directional, Non-Matching
durability: 100,000 Double Rubs
seam slippage: 108.0 lbs. Warp / 150.1 lbs. Weft
flame retardance: UFAC/NFPA 260 Class 1, CAL 117-2013
cleaning: **C W BC** (Bleach Cleanable 10:1)

MAYERFABRICS

customerservice@mayerfabrics.com | 800.428.4415

Fidget • Order Samples: cfstinson.com • Pattern Scale Shown at 25%



Infrared



Moonbeam



Zeal



Seaport



Garnet



Voyager



Adventure



Valley

content: 70% Polyester, 30% Nylon with Acrylic Backing
finish: Non-Fluorine Stain Resistant
repeat: 14.125" H, 14.25" V
durability: 100,000 Double Rubs
seam slippage: 47.1 lbs. Warp / 73.3 lbs. Weft
flame retardance: UFAC/NFPA 260 Class 1, CAL 117-2013 Section 1
cleaning: **W** (Bleach Cleanable 4:1)
GREENGUARD Gold Certified®

Stinson®

customerrelations@cfstinson.com | 800.841.6279

Haven • Additional Colors / Order Samples: mayerfabrics.com



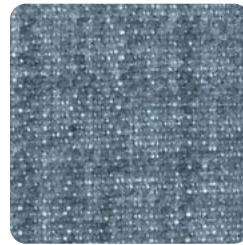
Ruby



Butterscotch



Peridot



Iceberg



Gravel



Apricot



Ocean



Grey



Iron

content: 92% Polyester, 6% Polyurethane, 2% Silicone
finish: Supreen (Silicone) PFC/PFOA-Free
repeat: Non-Matching, Directional
durability: 100,000 Double Rubs
seam strength: 87.5 lbs. Warp / 99.5 lbs. Weft
flame retardance: UFAC/NFPA 260 Class 1, CAL 117-2013 Section 1
cleaning: **W S BC** (Bleach Cleanable 9:1)
GREENGUARD Gold Certified®

MAYERFABRICS

customerservice@mayerfabrics.com | 800.428.4415

To ensure color accuracy, please order a memo sample. More info at hpfi.com/NOW.

Isle • Order Samples: concertex.com



Tinsel



Fog



Shiitake



Branch



Nori



Barista

content: 100% Vinyl / Phthalate Free
finish: Graffiti-Free®
repeat: Non-Matching
durability: 300,000 Double Rubs
seam slippage: xx.x lbs. Warp / xx.x lbs. Weft
flame retardance: UFAC/NFPA 260 Class 1, CAL 117-2013 Sec. 1, IMO A652 (16) 8.2
cleaning: **W S** (Bleach Cleanable 10:1)
GREENGUARD Certified®

Concertex

info@concertex.com | 888.395.2399

Riverstone • Order Samples: cfstinson.com • Pattern Scale Shown at 25%



Bridge



Mineral



Stream



Water



Beryl



Bayou



Slate

content: Phthalate-Free Vinyl Face with Polyester Backing
finish: Advanced Soil and Stain Resistant Top Coat + Ink Resistance
repeat: 16.875" H, 8" V (Non-Matching Directional)
durability: 1,30,000 Double Rubs
seam slippage: 35.0 lbs. Warp / 30.0 lbs. Weft
flame retardance: UFAC/NFPA 260 Class 1, CAL 117-2013 Section 1
cleaning: **W** (Bleach Cleanable 9:1)
GREENGUARD Gold Certified®

Stinson®

customerrelations@cfstinson.com | 800.841.6279

Cycle • Additional Colors / Order Samples: cfstinson.com • Pattern Scale Shown at 25%



Twirl



Curl



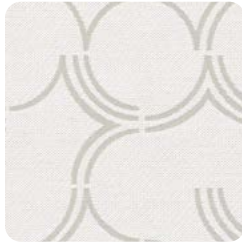
Wheel



Spiral



Bangle



Track



Rotate



Loop



Spin

content: 100% Polyester
finish: Advanced Soil & Stain Resistant Top Coat
repeat: 14.0" H, 16.375" V
durability: 100,000 Double Rubs
seam slippage: 52.1 lbs. Warp / 58.7 lbs. Weft
flame retardance: UFAC/NFPA 260 Class 1, CAL 117-2013 Section 1
cleaning: **W** (Bleach Cleanable 10:1)
GREENGUARD Gold Certified®

Stinson®

customerrelations@cfstinson.com | 800.841.6279

Fiberdrill • Additional Colors / Order Samples: cfstinson.com • Pattern Scale Shown at 50%



Classic



Praline



Fava



Honey



Cinnamon



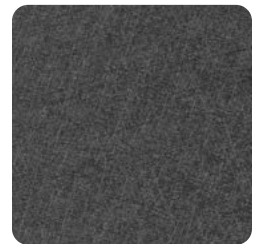
Elm



Storm



Graphite



Black Ice

content: 100% Polyurethane (Polycarbonate Resins)
finish: Advanced Soil & Stain Resistant Top Coat
repeat: Non-Matching
durability: 300,000 Double Rubs
seam slippage: 70.3 lbs. Warp / 66.2 lbs. Weft
flame retardance: UFAC/NFPA 260 Class 1, CAL 117-2013 Section 1
cleaning: **W** (Bleach Cleanable 4:1)
GREENGUARD Certified®

Stinson®

customerrelations@cfstinson.com | 800.841.6279

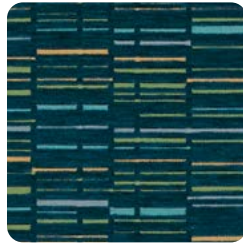
To ensure color accuracy, please order a memo sample. More info at hpfi.com/NOW.

grade 9

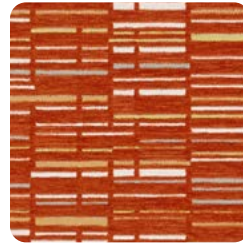
Glimpse • Order Samples: cfstinson.com • Pattern Scale Shown at 25%



Zen



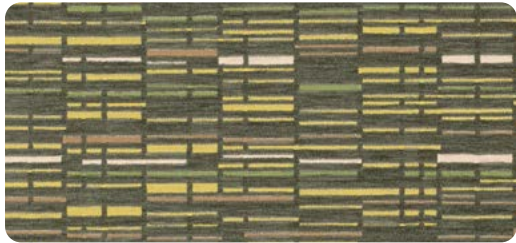
Splash



Vivid



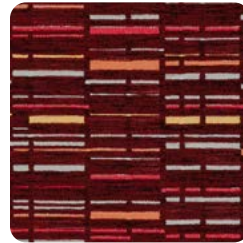
Legend



Apple



Sonic



Cordial



Pier

content: 65% Polyester , 32% Cotton
finish: Non-Fluorine Stain Resistant
repeat: 14.0" H, 23.125" V
durability: 100,000 Double Rubs
seam slippage: 134 lbs. Warp / 103 lbs. Weft
flame retardance: UFAC/NFPA 260 Class 1, CAL 117-2013 Section 1
cleaning: S
GREENGUARD GOLD Certified®

Stinson®

customerrelations@cfstinson.com | 800.841.6279

Silica • Additional Colors / Order Samples: momentumtextilesandwalls.com



Sands



Tropic



Appletini



Lemon



Shale



Regatta



Dewpoint



Marigold



Breakwater



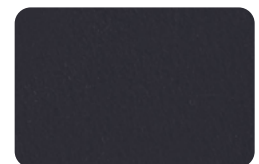
Bright Night



Surf



Dare



Gallant

content: 100% Silicone
repeat: Non-Matching
durability: 365,000 Double Rubs
seam strength: 71 lbs. Warp / 79 lbs. Weft
flame retardance: UFAC/NFPA 260 Class 1, CAL 117-2013 Section 1, IMO Part 8
cleaning: W S (Bleach Cleanable 4:1)
GREENGUARD Gold Certified®; PVC Free



MOMENTUM
 TEXTILES & WALLCOVERING

customerservice@momtex.com | 800.366.6839

To ensure color accuracy, please order a memo sample. More info at hpf.com/NOW.

Tradewinds CV • Order Samples: momentumtextilesandwalls.com • Pattern Scale Shown at 50%



Morel



Cane



Pumice



Cocoa



Tropic



Dew



Serene



Galena

content: 100% Clean Vinyl / Phthalate Free
finish: Protective Overcoat®
repeat: 9" H, 8.75" V
durability: 200,000 Double Rubs
seam strength: 46.0 lbs. Warp / 39.0 lbs. Weft
flame retardance: UFAC/NFPA 260 Class 1, CAL 117-2013 Section 1, IMO Part 8
cleaning: **W S** (Bleach Cleanable 10:1)
GREENGUARD Gold Certified®; PVC Free



MOMENTUM
 TEXTILES & WALLCOVERING

customerservice@momtex.com | 800.366.6839

Upgrade • Order Samples: cfstinson.com • Pattern Scale Shown at 25%



Max



Melon



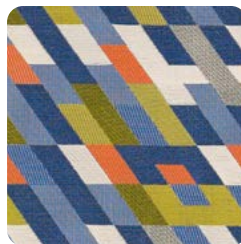
Citrus



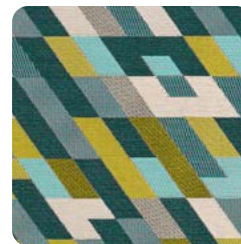
Rocket



Brightside



Multi



Perk



Luxe

content: 55% Polyester, 29% Nylon, 6% Post-Consumer Recycled Polyester
repeat: 14" H, 13.5" V
durability: 100,000 Double Rubs
seam strength: 71.4 lbs. Warp / 108.7 lbs. Weft
flame retardance: UFAC/NFPA 260 Class 1, CAL 117-2013 Section 1
cleaning: **W S** (Bleach Cleanable 10:1)
GREENGUARD Gold Certified®

Stinson®

customerrelations@cfstinson.com | 800.841.6279

To ensure color accuracy, please order a memo sample. More info at hpf.com/NOW.

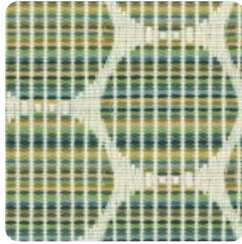
grade 10

Centric

• Additional Colors / Order Samples: mayerfabrics.com • Pattern Scale Shown at 50%



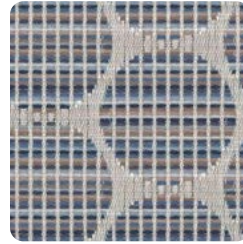
Grotto



Meadow



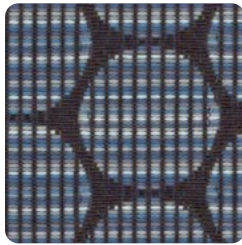
Cinnamon



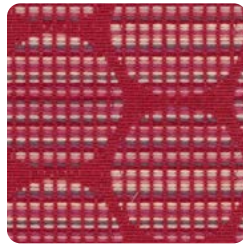
Denim



Mocha



Ink



Ruby



Dew



Shale

content:
finish:
repeat:
durability:
seam strength:
flame retardance:
cleaning:

81% Polyester/19% Post-Consumer Recycled Polyester
Crypton® with antimicrobial Silver Ion technology
2.5" H, 1.375" V
102,000 Double Rubs
84 lbs. Warp / 90 lbs. Weft
UFAC/NFPA 260 class 1, CAL 117-2013 Section 1
C W BC (Bleach Cleanable 9:1)
GREENGUARD Certified®

MAYERFABRICS

customerservice@mayerfabrics.com | 800.428.4415

Meteor

• Order Samples: cfstinson.com • Pattern Scale Shown at 25%



Cobalt



March



Terra



Cliff



Moonstone



Vessel



Rain



Nomad



Pastoral

content:
finish:
repeat:
durability:
seam slippage:
flame retardance:
cleaning:

Non-Phthalate Vinyl Surface with Polyester Backing
Advanced Soil & Stain Resistant Top Coat
13.125" H, 11.875" V
100,000 Double Rubs
46 lbs. Warp / 35 lbs. Weft
UFAC/NFPA 260 Class 1, CAL 117-2013 Section 1
W BC (Bleach Cleanable 9:1)
GREENGUARD Certified®

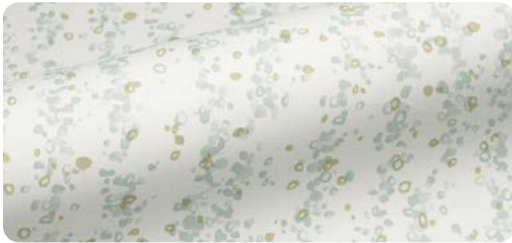
Stinson®

customerrelations@cfstinson.com | 800.841.6279

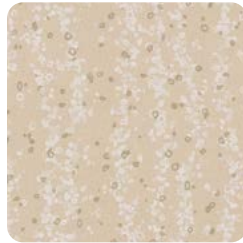
To ensure color accuracy, please order a memo sample. More info at hpf.com/NOW.

grade 10

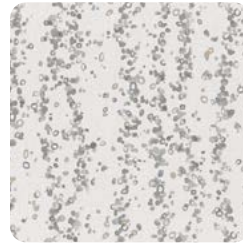
Pebble Trail • Order Samples: cfstinson.com • Pattern Scale Shown at 25%



Celadon



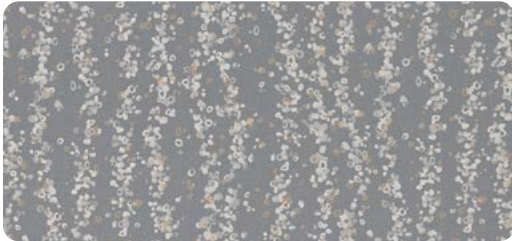
Beach



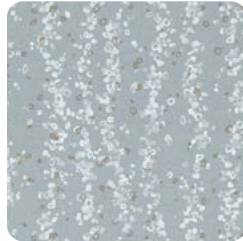
Calm



Driftwood



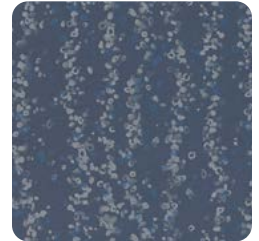
Delta



Tranquil



Aquifer



Huron

content: Non-Phthalate Vinyl Surface with Polyester Backing
finish: Advanced Soil & Stain Resistant Top Coat + Ink & Denim Resistance
repeat: 13.5" H, 9" V, Directional
durability: 100,000 Double Rubs
seam slippage: 46 lbs. Warp / 35 lbs. Weft
flame retardance: UFAC/NFPA 260 Class 1, CAL 117-2013 Section 1
cleaning: **W** (Bleach Cleanable 9:1)
GREENGUARD Gold Certified®

Stinson®

customerrelations@cfstinson.com | 800.841.6279

Terra • Additional Colors / Order Samples: cfstinson.com • Pattern Scale Shown at 25%



Jadeite



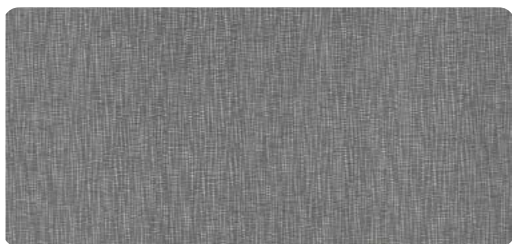
Bark



Element



Peat



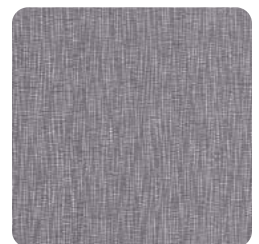
Fossil



Sky



Water



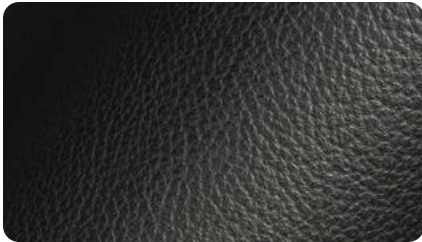
Helio

content: 100% Polycarbonate Polyurethane
finish: Advanced Soil & Stain Resistant Top Coat + Ink & Denim Resistance
repeat: 28" H, 23.375" V
durability: 100,000 Double Rubs
seam slippage: 76.0 lbs. Warp / 86.0 lbs. Weft
flame retardance: UFAC/NFPA 260 Class 1, CAL 117-2013 Section 1
cleaning: **W** (Bleach Cleanable 9:1)
GREENGUARD Gold Certified®

Stinson®

customerrelations@cfstinson.com | 800.841.6279

Classico Leather



Black



Chocolate



Wine

content: Top Grain Dyed Cow Hide
finish: Semi-Aniline
repeat: Non-Matching
flame retardance: UFAC/NFPA 260 Class 1, CAL 117-2013 Section 1
cleaning: **W**

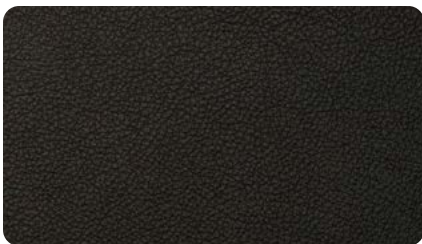
Baroque Leather



ALO4 Blackberry

content: Top Grain, Semi-Aniline Dyed Cow Hide
finish: Two-Tone Savage with Clear Coat
repeat: Non-Matching
flame retardance: UFAC/NFPA 260 Class 1, CAL 117-2013 Section 1
cleaning: **W**

Mammut Leather

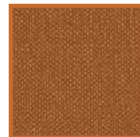
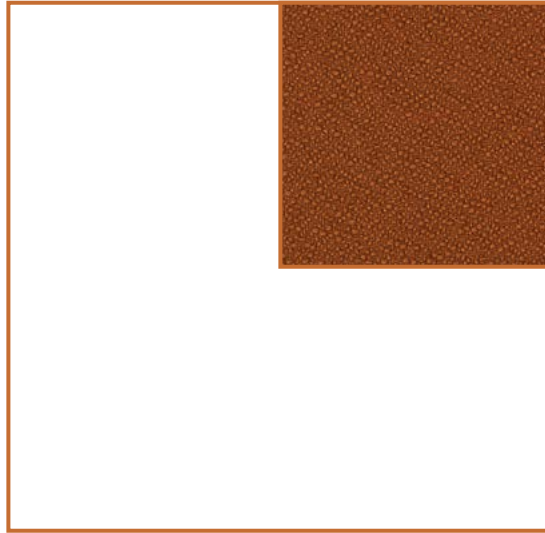
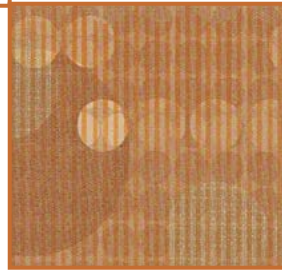


AL18 Black



AL16 Hunter

content: Top Grain, Semi-Aniline Dyed Cow Hide
finish: Water-Based Top Coat
repeat: Non-Matching
flame retardance: CAL 117-2013 Section 1
cleaning: **W**



HPFi