

FEATURING...

WARP SPEED® >> **IN STOCK**  
for quick delivery!



## Sherpa & Shire >>

*Sherpa & Shire have been the hallmark of durability and cleanability since their inception. Cited by Interior Design magazine for their longevity as the best of the past 25 years, these fabrics are nearly impervious to damage.*

---

UPHOLSTERY FABRIC **LL\***  
100% Marquésa Lana®

**Marquésa**   
**Lana**®

\* Covered by a Limited Lifetime performance warranty.

**Sherpa & Shire** *Marquésa Lana polyolefin is an environmentally friendly product that entails a mode of manufacturing that not only prevents damage to the environment, but actually reduces the carbon footprint by utilizing waste products from gasoline manufacturing. It is a byproduct of post-industrial waste and its manufacture produces no waste product.*



*Sherpa Travertine*



*Sherpa Grey Mix*



*Shire Sage*



*Shire Pine*



*Shire Spa Blue*



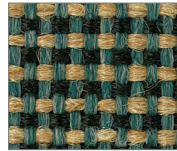
*Sherpa Denim*



*Sherpa Gargoyle*



*Shire Greystone*



*Shire Heath*



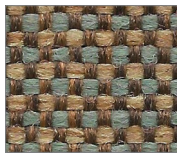
*Sherpa Jade*



*Shire Turquoise*



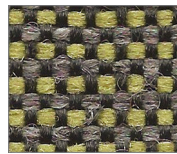
*Shire Chesapeake*



*Shire Woodstock*



*Shire Horizon*



*Shire Limelight*



*Sherpa Teal*



*Shire Tahoe Blue*



*Sherpa Hudson Bay*



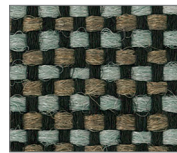
*Sherpa Clove*



*Shire Bison*



*Shire Pesto*



*Shire Aqueduct*



*Sherpa Ivy League*



*Shire Tuscan Blue*



*Sherpa Coffee*



*Sherpa Mahogany*



*Sherpa Billiard*



*Sherpa Hunter*



*Shire Mariner*



*Shire Potomac*

WARP SPEED® **IN STOCK**  
for quick delivery!

*In our continuing efforts to provide you with the best service and quickest delivery, our most in-demand Sherpa and Shire colors are now in our Warp Speed® In Stock program.*



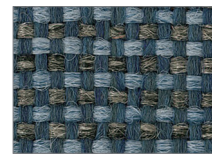
*Shire Sesame*



*Sherpa Brown Haze*



*Shire Blair Brown*



*Shire Steel Blue*



*Shire Titan Blue*



*Sherpa Mocha*



*Shire Hopsack*



*Shire Fossil*



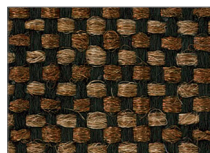
*Shire Black Marble*



*Shire Merrimac*



*Shire Koala*



*Shire Espresso*



*Shire Stonewall*



*Sherpa Grey Heather*



*Sherpa Black*

*Its built in resistance to staining and wear eliminates the need for after market stain resistant finishes. It is recyclable and is unique in its utilization of conservation methods from inception to disposal.*



Shire Cordon Bleu



Shire Grey Lilac



Sherpa Mauve



Shire Nectar



Sherpa Amber



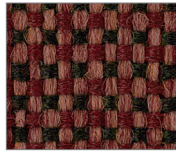
Sherpa Leapfrog



Shire Levi Blue



Sherpa Viola



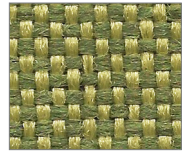
Shire Black Cherry



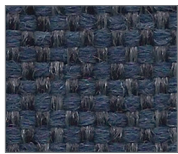
Shire Acorn



Sherpa Snappy



Shire Dill



Shire Gettysburg



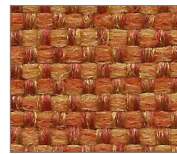
Sherpa Purple Velvet



Shire Country



Sherpa Autumn



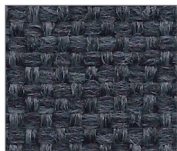
Shire Peachland



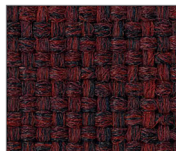
Shire Patina



Shire Delft Blue



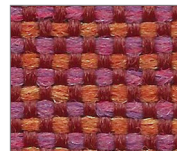
Sherpa Keydet Blue



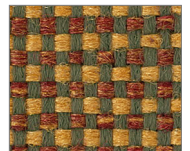
Sherpa Newport



Shire Oxford



Shire Tulip



Shire Marigold



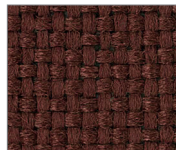
Sherpa Special Blue



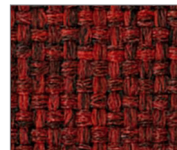
Shire Dark Night



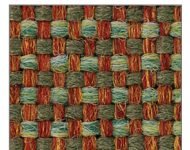
Sherpa Concord



Sherpa Rosewood

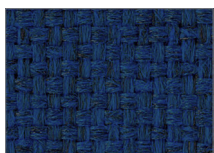


Sherpa Garnet



Shire Tigerlily

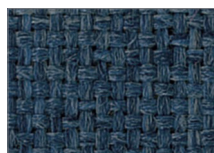
*We have carefully analyzed the popularity of the colors, and the resultant winners are represented here and are all available for immediate shipment. Only the items below the line are in the Warp Speed® Program.*



Sherpa Royal



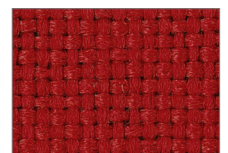
Shire Commodore



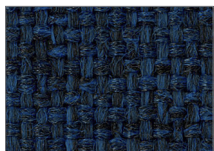
Sherpa Academy Blue



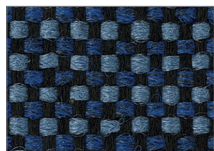
Shire Ascot



Sherpa Cardinal



Sherpa Dark Blue



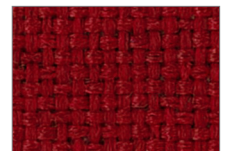
Shire Midnight



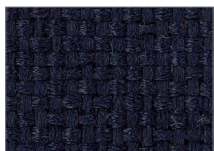
Sherpa Indigo



Shire Bricktown



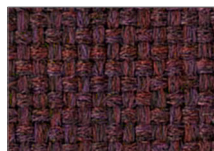
Sherpa Scarlet



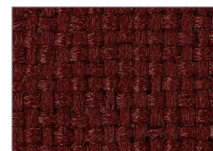
Sherpa Navy



Shire Ink



Sherpa Grape



Sherpa Maroon



Shire Red Rose

# Sherpa & Shire UPHOLSTERY FABRIC

LL\* Patterns are covered by a limited lifetime performance warranty. Contact your sales representative for written warranty terms and conditions.

## TECHNICAL INFORMATION

**Fiber:** 100% Marquésa Lana®

**Backing | Finish:** Acrylic

**A Abrasion Resistance:** 250,000 double rubs (wire screen)

**Weight:** 16.0 ounces per linear yard (±1 oz.); 494 g/m

**Width:** 54" (137-140 cm)

**Repeat:** None (Pattern is woven up the roll and suitable for railloading)

**\* Lightfastness:** 400 Hours, Class 5

**☘ Colorfastness:** Wet - Class 5 | Dry - Class 5

**☆ Seam Slippage:** Warp - 91 lbs | Fill - 95 lbs.

**Cleaning Instructions:** WS - For water-based stains, use mild detergent foam or upholstery shampoo. For oil based stains, spot clean fabric with a dry cleaning solvent, being sure to test area first.

**🔥 Flame Resistance:** California Technical Bulletin 117-2013; NFPA 260

**Fabrics by Absecon Mills, Inc.** Fabric performance symbols indicate that a fabric performs to commercial furniture manufacturing standards and passes all applicable testing as specified by the Association for Contract Textiles (ACT).

08/2017 | For additional cards or memo samples:  
email [samples@aanddstyle.com](mailto:samples@aanddstyle.com)



Absecon Mills is focused on being a responsible corporate entity and we are continually striving to find ways to help preserve our environment, increase energy efficiency and reduce waste. Our mode of manufacturing is specifically designed to prevent damage to the environment. Our products are woven using wind power and many are constructed with polypropylene (a by-product of gasoline manufacturing, utilizing post-industrial waste) and recycled polyester, which helps keep post-consumer waste in the material stream and out of landfills. Absecon offers finishes that use ten times less fluorocarbons than conventional finishes and are SCS Indoor Advantage Gold certified. We participate in a fabric recycling program and work hard to lessen our footprint on the environment. For more information on our green initiatives, please visit [www.absecon.com](http://www.absecon.com).



WOVEN WITH WIND POWER

Colors may vary slightly from dye lot to dye lot.

\*ASTM-D-4034: Seam 12mm from edge using 7 stitches per 25mm (1"), plain lock stitch and a 22 ballpoint needle)

