

# Bench Units

MTFB12 | MTR60B | METB | MTO60B | MCTB12



CURVE TABLE  
NEW FOR 2019



National  
Public  
Seating

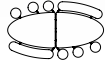
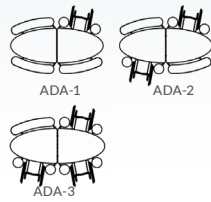


800.261.4112  
www.nationalpublicseating.com

# PRODUCT INFO



**Elliptical Bench Table**  
METB

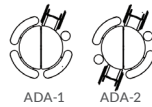


Stool & bench combinations available

Model	Seats	Table WxL	Folded Dimensions	Table-Seat Height (Standard)	Table-Seat Height (Custom)
METB	8	60"x60"	34"x86"x54½"	29"-17"	25"-13" 27"-15" 32"-20"



**Round Bench Table**  
MTR60B

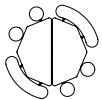
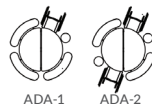


Stool & bench combinations available

Model	Seats	Table WxL	Folded Dimensions	Table-Seat Height (Standard)	Table-Seat Height (Custom)
MTR60B	10-14	45"x121"	72"x35½"x73½"	29"-17"	25"-13" 27"-15" 32"-20"



**Octagon Bench Table**  
MTO60B

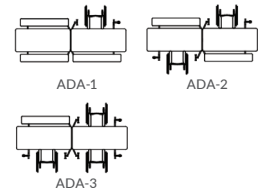


Stool & bench combinations available

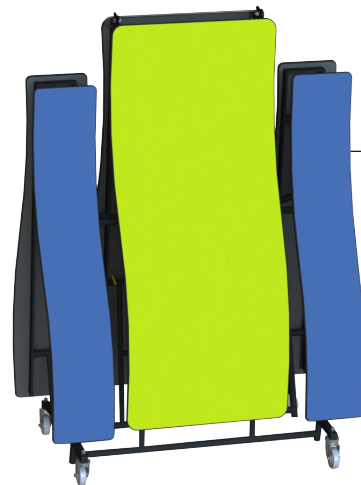
Model	Seats	Table WxL	Folded Dimensions	Table-Seat Height (Standard)	Table-Seat Height (Custom)
MTO60B	8	60"x60"	34"x86"x54½"	29"-17"	25"-13" 27"-15" 32"-20"



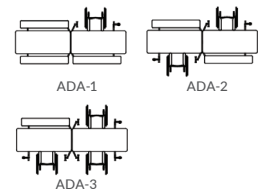
**Rectangular Bench Table**  
MTFB12



Model	Seats	Table WxL	Folded Dimensions	Table-Seat Height (Standard)	Table-Seat Height (Custom)
MTFB8	8-12	30"x97"	56"x34½"x59¾"	29"-17"	25"-13" 27"-15" 32"-20"
MTFB10	10-14	30"x121"	56"x35"x68½"	29"-17"	25"-13" 27"-15" 32"-20"
MTFB12	12-16	30"x145"	56"x35½"x81"	29"-17"	25"-13" 27"-15" 32"-20"



**Curve Bench Table**  
MCTB12



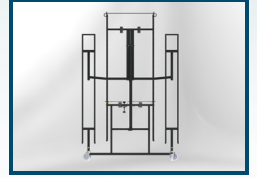
Model	Seats	Table WxL	Folded Dimensions	Table-Seat Height (Standard)	Table-Seat Height (Custom)
MCTB8	8-12	30"x97"	56"x34½"x59¾"	29"-17"	25"-13" 27"-15" 32"-20"
MCTB10	10-14	30"x121"	56"x35"x68½"	29"-17"	25"-13" 27"-15" 32"-20"
MCTB12	12-16	30"x145"	56"x35½"x81"	29"-17"	25"-13" 27"-15" 32"-20"

# ADVANTAGES & BENEFITS

Frame Design | Table Top | Seat

## Sophistication made Simple with Safety in mind.

NPS Mobile Tables are sophisticated in design yet simple to operate. Offering enhanced safety features giving you complete peace of mind.



### Frame Design

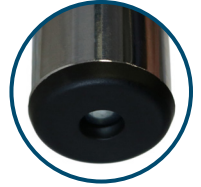
Intelligent steel understructure design supports table tops and seating providing ease of operation and maintenance.

#### Table Top Apron Support

- Each top is supported by 2" deep, 14 gauge steel aprons capped at the ends with riveted plastic protectors.
- Aprons and brackets are fastened to wood with custom designed tamper resistant screws with superior holding power while still easily serviceable if the need arises.
- Tops are supported between the leg top tubes and wood with spacers.

#### Leg Assembly

- Structural leg components are comprised of 1¼" diameter, 14 gauge steel tubing.
- Legs and stool columns are constructed of 1¼" diameter, 14 gauge steel tubing and braced horizontally to the stool support column on the opposite side of the table to resist bending.

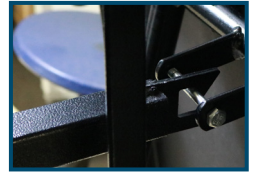


#### Lock Rod

- Heavy duty 7/16" diameter lock rod is chrome plated to resist wear.
- Tamper resistant lock nuts on all down lock assemblies with self-adjusting hinge lock ensure that the down lock engages every time.

#### Storage Lock

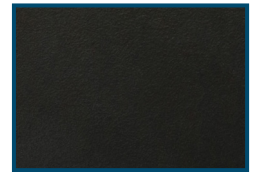
- Heavy duty storage lock is comprised of 1¼" square tube with heavy duty catch. Locks automatically in storage position and easily release from either side of the table when opening.



### Table Top & Seats

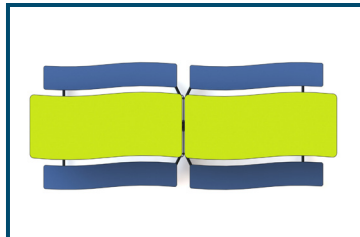
#### Core

- Available in MDF, Particleboard, or Plywood.
- Tops and benches are surfaced with high pressure laminate bonded to a 3/4" thick AC grade core, sealed underneath with a phenolic backer sheet. This is especially helpful when cleaning the underside of the table.



#### Edge

- Available with Protect Edge or Vinyl T-Molding.
- Protect Edge is sealed with a polyurethane epoxy resin. Chemically bound to the edge of the laminate, core and phenolic backing sheet.
- Vinyl T-molding is secured by staples to the tops underside approximately every 10".



# ADVANTAGES & BENEFITS

Hardware | Operation | Safety

## Hardware

### Table Top Screws

- Serrated head and thick threading provides superior holding power to frame with the ability to be serviced easily in the field.
- Tamper resistant



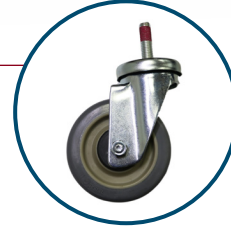
### Flower Glides and Tube Closures

- Made from glass infused nylon and spring steel, will not break or fall out.



### Casters

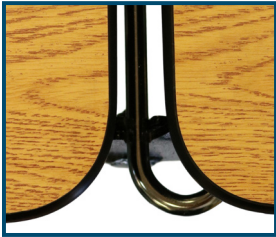
- 4" heavy-duty, double ball bearing casters
- Weight capacity of 275 lbs. per caster
- Hard rubber, non-marring wheels



## Operation

### Entrances

- Each bench is designed for easy entry on both ends.



### Locking - Opening

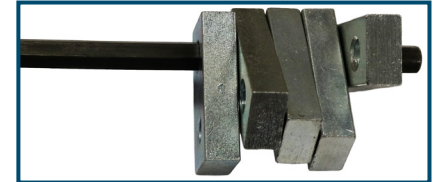
- A gravity lock automatically locks the table in the open position. The lock is disengaged manually, capable of operating from both sides of the table.

### Locking - Folding

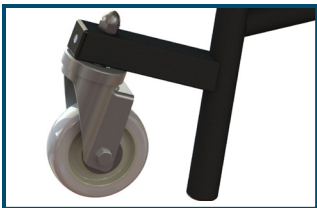
- The storage lock latch automatically locks the table in the folded storage position. The lock is disengaged manually, capable of operating from both sides of the table within easy reach.

### Custom Torsion Bar System

- Easy opening and closing via a perfectly balanced torsion bar system.
- Each unit includes 1 to 5 torsion bars determined by table size and core material.
- Each torsion bar is at a specific angle based on weight distribution.



## Safety



### Lift-Off Casters

- Mobile tables incorporate the beneficial caster lift-off design in which casters lift off the floor in the open position.
- Lift-off casters do not protrude past the seats so they are not a tripping hazard.

### Midway Position Lock

- Secures the unit in a partially folded position for ease of movement during floor cleaning and to prevent finger or hand pinching.



### Storage Lock Latch

- Vertical adjustment ensures that the table always locks safely into the folded position.

### UL Certified

- Tested for 7,000 open/close cycles exceeding the UL testing of 6,000 cycles.

### Safety Position

- Folds in teepee position to prevent tipping.



# DESIGN OPTIONS

## Table & Bench Core Options



MDF  
(MD)



Particleboard  
(PB)

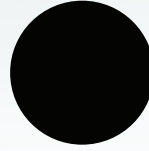


Plywood  
(PW)

## Frame Color Options



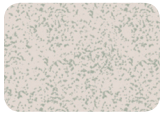
Chrome  
(CR)



Powder Coated  
(PC)



## Standard Laminate Options



Grey Nebula  
(GY)



Montana  
Walnut (WT)



Banister Oak  
(OK)



Wild Cherry  
(CH)



Fusion Maple  
(FM)



Marigold  
(YW)



Hollyberry  
(RE)



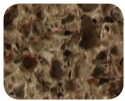
Persian Blue  
(BL)

## Custom Laminate Options

More Wilsonart laminate options available!



Asian Sand  
(7952K-18)



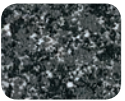
Antique Topaz  
(4863K-07)



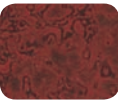
Rustic Slate  
(4888-38)



Bottle Glass  
(4901K-01)



Ebony Star  
(4552K-07)



Mission Glaze  
(4854-38)



Berry Fizz  
(4935-38)



Antique Brush  
(4823-60)



Mystique Marine  
(4759-60)



Skyline Walnut  
(7964K-12)



Blue Agave  
(4919-60)



Island  
(D498K-18)

## Table Edge & Bench Options



Vinyl T-Molding  
(TM)



Protect Edge | Black  
(PE)

## Non Standard Table/Seat Codes\*

25"/13"  
(25)

27"/15"  
(27)

32"/20"  
(32)

\*For non-standard heights add code to end of model number

## Custom Table Edge & Bench Options



Protect Edge | Navy  
(PE/N)



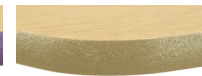
Protect Edge | Green  
(PE/G)



Protect Edge | Red  
(PE/R)



Protect Edge | Purple  
(PE/P)



Protect Edge | Beige  
(PE/B)



## Table Models

**MTR60B**  
Mobile Cafeteria Table w/  
Benches, Round 60"

**METB**  
Mobile Cafeteria Table w/  
Benches, Elliptical

**MTO60B**  
Mobile Cafeteria Table  
w/ Benches, Octagon 60"

**MTFB8**  
Mobile Cafeteria Table  
w/ Benches, 8'L

**MTFB10**  
Mobile Cafeteria Table  
w/ Benches, 10'L

**MTFB12**  
Mobile Cafeteria Table  
w/ Benches, 12'L

**MCTB8**  
Mobile Curve Table  
w/ Benches

**MCTB10**  
Mobile Curve Table  
w/ Benches

**MCTB12**  
Mobile Curve Table  
w/ Benches

## Model Number Configuration

Model Number      Core      Edge      Frame      Laminate Color Top

**MTFB12-PW PE CR CH GY**

Laminate Color Bench



**National  
Public  
Seating**



800.261.4112  
www.nationalpublicseating.com