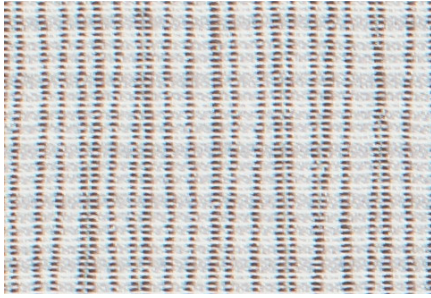


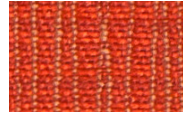
SIGNATURE

JULY 1, 2017

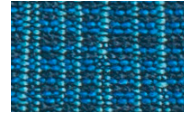
MOMENTUM
T E X T I L E S



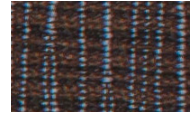
GRAPH ALPINE



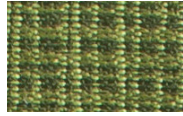
POPPY



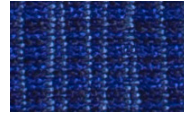
TIDAL



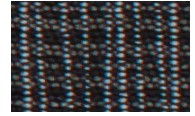
BARK



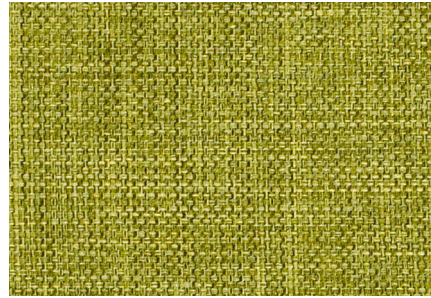
PARROT



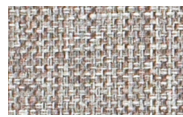
LAPIS



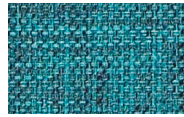
COAL



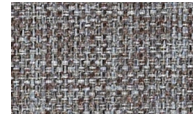
COVER CLOTH SORREL



PLATINUM



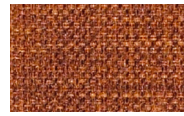
CYAN



VESPER



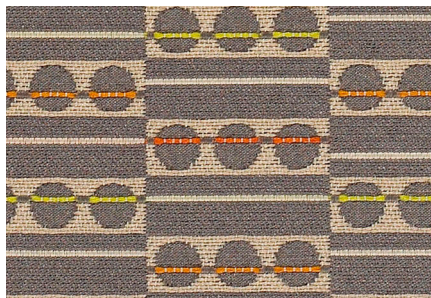
TAUPE



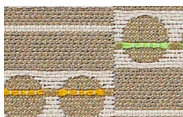
SAVOR



GRAPHITE



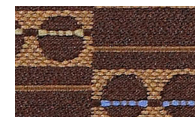
FOCAL TERRACE



LINEN



CITRON



CHOCOLATE



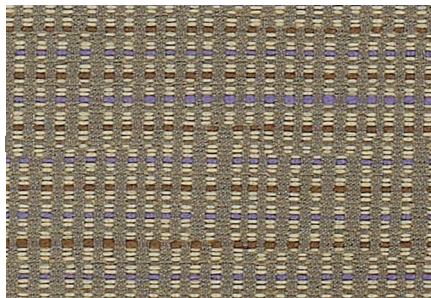
ALERT



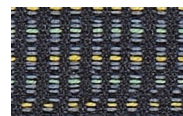
METRO



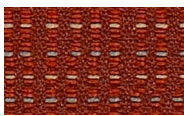
HUDSON



DART ASH



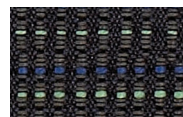
INK



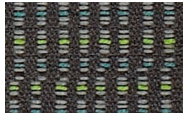
CARMINE



SLATE



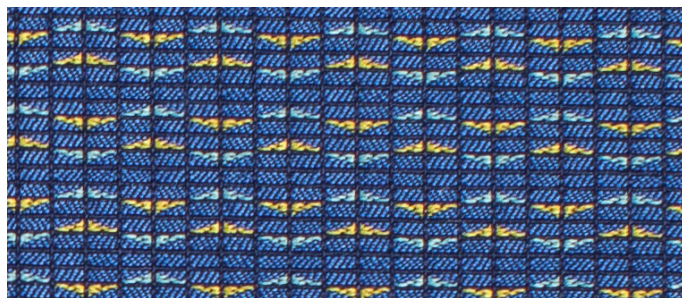
CADET



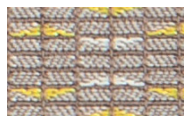
GEODE



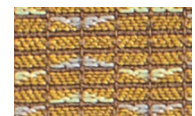
EBONY



SLICE ADMIRAL



MILLER



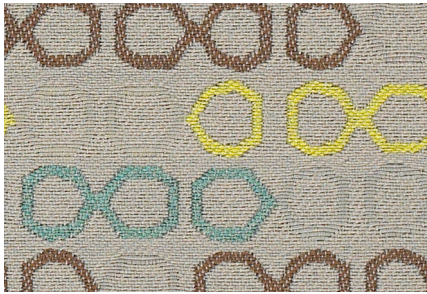
PUMICE



HENNA



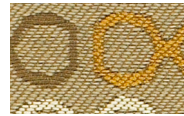
CHARCOAL



LENS SILVER



SAND



TERRA



CRIMSON



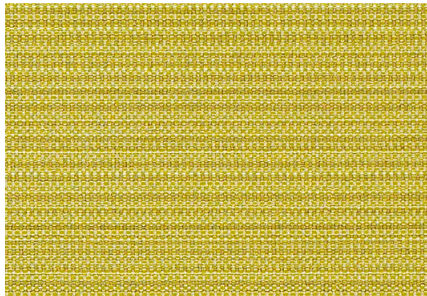
GRAPHITE



NAVY



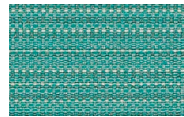
NIGHT



SKIP KEYLIME



CHALK



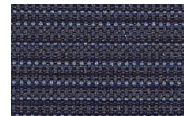
POOL



RUBY



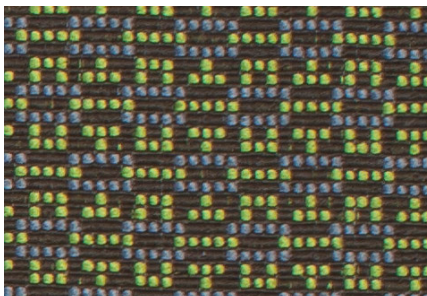
ALLOY



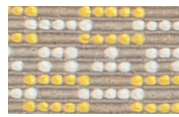
CAPTAIN



FLINT



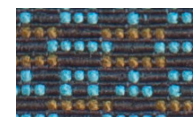
BOBBY MOSS



LEMON



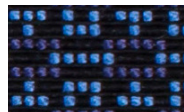
GLOW



AQUA



FUSCHSIA



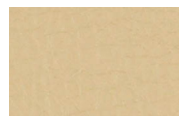
IRIS



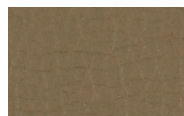
ANCHOR



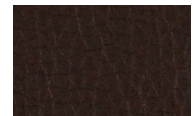
CANTER STORM



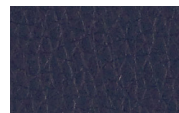
SAND



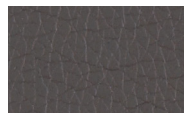
EARTH



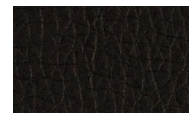
SABLE



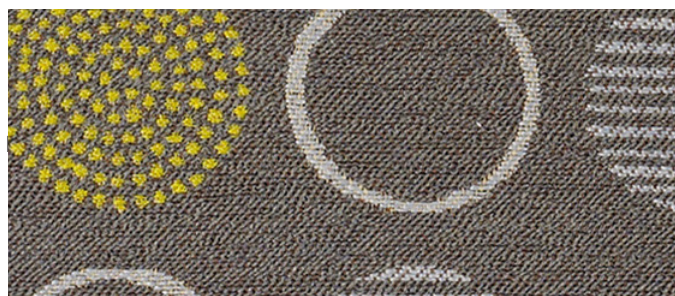
NIGHT



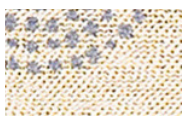
IRON



ONYX



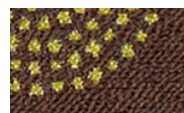
AMUSE ALLOY



QUARTZ



POPPY



MOCHA



ADMIRAL

TECHNICAL INFORMATION

Grade	Width - Pattern	Fiber Content & Backing	Finish	Abrasion (D.R.)	Light fastness	Approx. Repeats	Cl. Code
4	56" AMUSE ☼ ▲ ✱ ☉ ☆*	61% Post Consumer Recycled Polyester, 39% Polyester Acrylic Backing	Soil & Stain Resistant	50,000	40 Hrs Class 4	6 1/8" L, 7 1/2" W	WS
2	54" BOBBY ☼ ▲ ✱ ☉ ☆*	68% Repreve® Post Consumer Recycled Polyester, 32% Polyester Acrylic Backing		150,000	40 Hrs Class 3.5	7/8" L, 1/2" W	WS
4	54" CANTER ☼ ▲ ✱ ☉ ☆*	100% Polyurethane / PVC Free Polyester Backing		240,000	200 Hrs Class 4.5		W Bleach Cleanable (4:1)
4	59" COVER CLOTH ☼ ▲ ✱ ☉ ☆*	56% Repreve® Post Consumer Recycled Polyester, 44% Polyester	Crypton Green®	200,000	40 Hrs Class 4		W Bleach Cleanable (10:1)
2	56" DART ☼ ▲ ✱ ☉ ☆*	89% Repreve® Post Consumer Recycled Polyester, 11% Polyester Acrylic Backing		102,000	40 Hrs Class 5	9 5/8" L, 4 7/8" W	W
4	54" FOCAL ☼ ▲ ✱ ☉ ☆*	57% Post Consumer Recycled Polyester, 43% Polyester Acrylic Backing	Soil & Stain Resistant	60,000	40 Hrs Class 4.5	4 1/2" L, 2 3/8" W	WS
2	56" GRAPH ☼ ▲ ✱ ☉ ☆*	75% Repreve® Post Consumer Recycled Polyester, 25% Polyester Acrylic Backing		170,000	40 Hrs Class 5	3 3/8" L, 7 1/2" W	W
3	56" LENS ☼ ▲ ✱ ☉ ☆*	81% Repreve® Post Consumer Recycled Polyester, 19% Recycled Polyester Acrylic Backing		110,000	40 Hrs Class 4.5	10" L, 7 1/2" W	W
3	54" SKIP ☼ ▲ ✱ ☉ ☆*	55% Post Consumer Recycled Polyester, 45% Polyester Acrylic Backing	Soil & Stain Resistant	70,000	40 Hrs Class 4		WS
2	54" SLICE ☼ ▲ ✱ ☉ ☆*	84% Repreve® Post Consumer Recycled Polyester, 16% Polyester Acrylic Backing		80,000	40 Hrs Class 5	7/8" L, 3/4" W	WS

*ACT® Registered Certification Marks

All Patterns meet California Bulletin 117-2013
Primary Application: Upholstery Seating

EXPLANATION OF ACT ICONS FOR UPHOLSTERY

FIRE RETARDANCY

Flammability testing determined as fabric's resistance to burning.



PASSES
California 117-2013

COLORFASTNESS TO WET & DRY CROCKING

Colorfastness to wet & dry crocking refers to the rubbing off of color from the fabric onto clothing, hands or other materials and can occur under wet or dry conditions.



PASSES
AATCC 8-1974 Dry Crocking, Class 4 minimum; Wet Crocking, Class 3 minimum

COLORFASTNESS TO LIGHT

Colorfastness to light is the degree to which fabric will retain its color when exposed to light.



PASSES
AATCC 16A-1974 or AATCC 16E-1976; Class 4 minimum at 40 hours
NOTE: Class 4 minimum at 60 hours is recommended for direct sunlight exposure situations

PHYSICAL PROPERTIES

3 physical property tests include: brush pill test to determine a fabric's pilling. Breaking/tensile strength is the ability of a fabric to withstand breaking or tearing. Seam slippage is the pulling apart of fabrics at the seams.



PASSES
Brush Pill ASTM D3511, 3-4 minimum
Breaking Strength ASTM D3597-D1682-64 (1975) 50 lbs. minimum in warp & weft
Seam Slippage ASTM D3597-D434-75 25 lbs. minimum in warp & weft

ABRASION

Abrasion is the ability of a fabric to withstand damage from wear and rubbing. There is a general contract specification as well as a heavy duty specification.



PASSES
General Contract ASTM 3597 modified (#10 cotton duck); 15,000 double rubs Wyzenbeek Method



Heavy Duty ASTM 3597 modified (#10 cotton duck); 30,000 double rubs Wyzenbeek Method or ASTM D4966 (with 21 oz. weight); 40,000 rubs Martindale Method

CLEANING CODE DEFINITIONS

W: Water-based foam or cleaner.
WS: Water-based cleaning agents or foam.



GREENGUARD Gold Certified. CA Section 01350 compliant.
Eligible for CHPS Low-Emitting Material Credits.



14815 Radburn Ave.
Santa Fe Springs, CA 90670

Phone (562) 802-0464
Toll Free Fax (866) 624-9662
Toll Free Phone (866) 624-4968

Email: Sales@ocisitwell.com

Please visit our Website
www.ocisitwell.com

For memo samples contact:

MOMENTUM
T E X T I L E S

800-366-6839
memosamples.com