



BLEECKER/HUDSON

MAY 1, 2015



TECHNICAL INFORMATION

Grade	Width-Pattern	Fiber Content & Backing	Finish	Abrasion (D.R.)	Light fastness	Cleaning Code
1	54" BLEECKER ☹️🔥☀️👉🌟*	100% Polyester	Stain Repellent	100,000	40 Hrs. Class 5.0	S
1	54" HUDSON ☹️🔥☀️👉🌟*	100% Polyester	Stain Repellent	100,000	40 Hrs. Class 4.0	S

*ACT® Registered Certification Marks

All Patterns meet California Bulletin 117-E.
Primary Application: Upholstery Seating

EXPLANATION OF ACT ICONS FOR UPHOLSTERY

FIRE RETARDANCY

Flammability testing determined as fabric's resistance to burning.



PASSES
California 117

COLORFASTNESS TO WET & DRY CROCKING

Colorfastness to wet & dry crocking refers to the rubbing off of color from the fabric onto clothing, hands or other materials and can occur under wet or dry conditions.



PASSES
AATCC 8-1974 Dry Crocking, Class 4 minimum; Wet Crocking, Class 3 minimum

COLORFASTNESS TO LIGHT

Colorfastness to light is the degree to which fabric will retain its color when exposed to light.



PASSES
AATCC 16A-1974 or AATCC 16E-1976; Class 4 minimum at 40 hours
NOTE: Class 4 minimum at 60 hours is recommended for direct sunlight exposure situations.

PHYSICAL PROPERTIES

3 physical property tests include: brush pill test to determine a fabric's pilling. Breaking/tensile strength is the ability of a fabric to withstand tension without breaking or tearing. Seam slippage is the pulling apart of fabrics at the seams.



PASSES
Brush Pill ASTM D3511, 3-4 minimum
Breaking Strength ASTM D3597-D1682-64 (1975) 50 lbs. minimum in warp & weft
Seam Slippage ASTM D3597-D434-75 25 lbs. minimum in warp & weft

ABRASION

Abrasion is the ability of a fabric to withstand damage from wear and rubbing. There is a general contract specification as well as a heavy duty specification.

PASSES

☐ General Contract ASTM 3597 modified (#10 cotton duck); 15,000 double rubs Wyzenbeek Method
A Heavy Duty ASTM 3597 modified (#10 cotton duck); 30,000 double rubs Wyzenbeek Method or ASTM D4966 (with 21 oz. weight); 40,000 double rubs Martindale Method

CLEANING CODE DEFINITIONS

WS: Clean with water-based cleaning agents, foam or pure, water-free Solvents (Energine, Carbona, Renuzit or other similar products).
Vacuuming or light brushing is recommended to prevent dust and soil buildup.



14815 Radburn Ave.
Santa Fe Springs, CA 90670

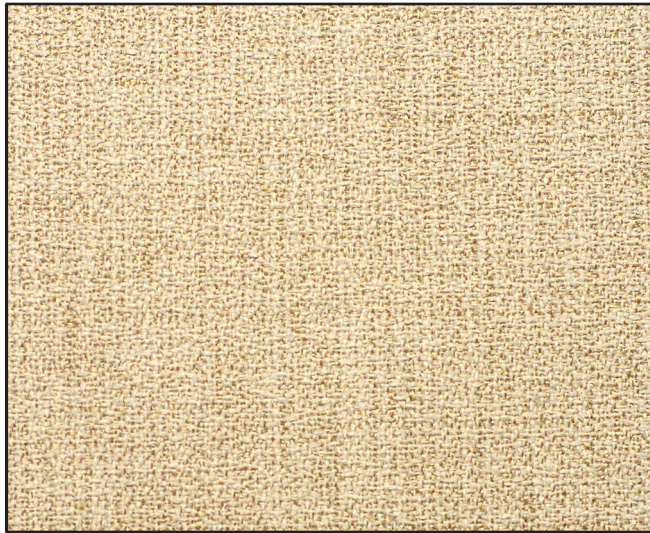
Phone (562) 802-0464
Toll Free Fax (866) 624-9662
Toll Free Phone (866) 624-4968

Email: sales@ocisitwell.com

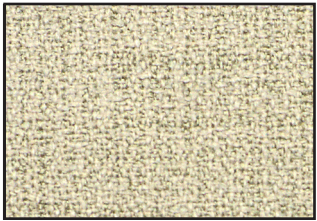
Please visit our Website
www.ocisitwell.com



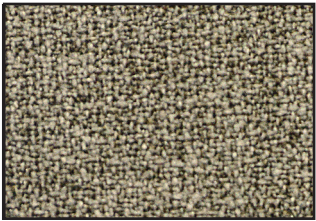
BLEECKER



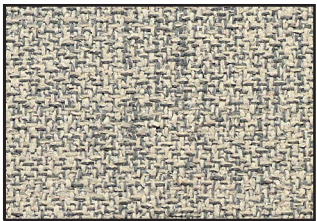
Canvas
MBLN-05



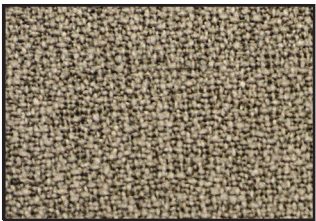
Corner Stone
MBLN-08



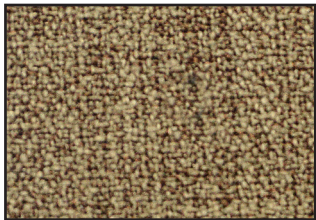
Trail
MBLN-21



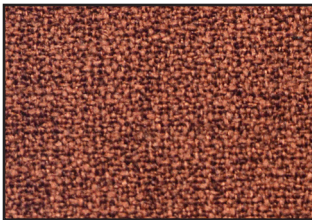
Skipping Stone
MBLN-19



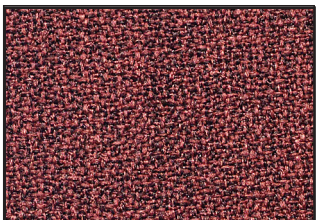
Nutmeg
MBLN-14



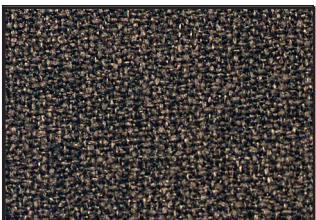
Tobacco
MBLN-20



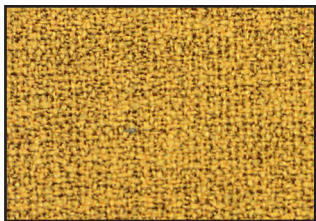
Autumn
MBLN-03



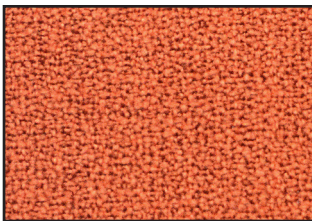
Garnet
MBLN-09



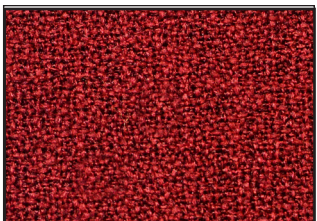
Kodiak
MBLN-11



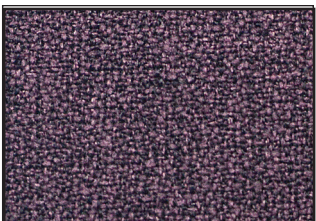
Mustard
MBLN-13



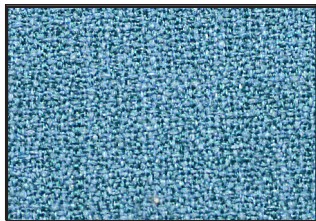
Papaya
MBLN-16



Scarlet
MBLN-18



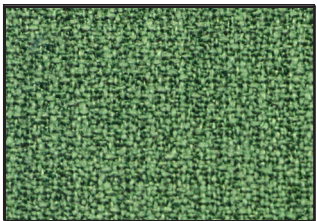
Concord
MBLN-07



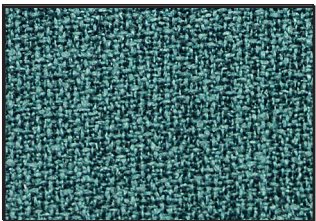
Glacier
MBLN-10



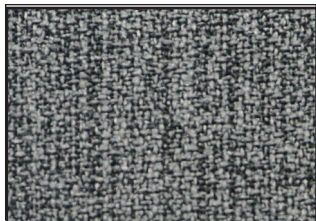
Celery
MBLN-06



Basil
MBLN-04



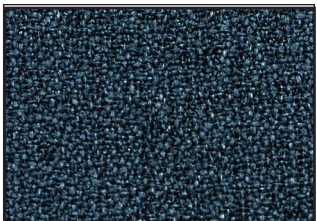
Lake
MBLN-12



Ash
MBLN-02



Quartz
MBLN-17

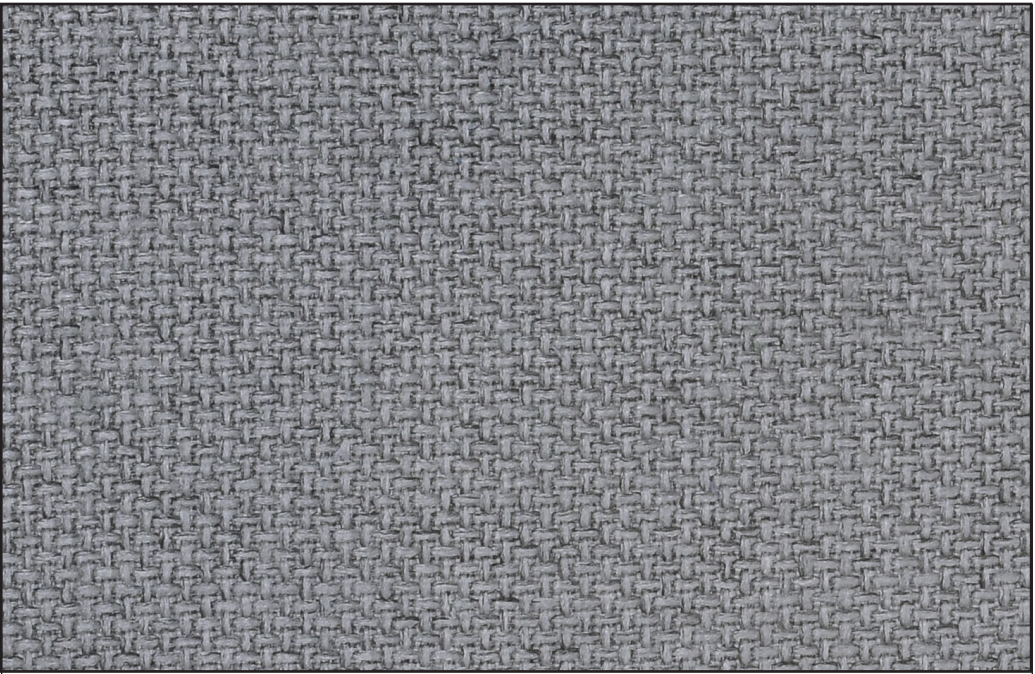


Pacific
MBLN-15



Anthracite
MBLN-01

HUDSON



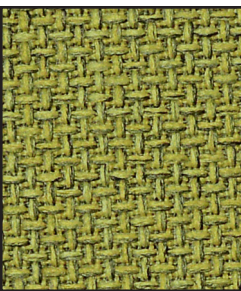
Flannel
MHUS-07



Parchment
MHUS-12



Husk
MHUS-10



Maize
MHUS-11



Cumin
MHUS-05



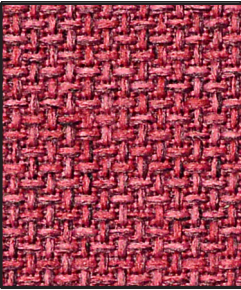
Scallion
MHUS-15



Henna
MHUS-09



Sunset
MHUS-16



Fuchsia
MHUS-08



Beet
MHUS-01



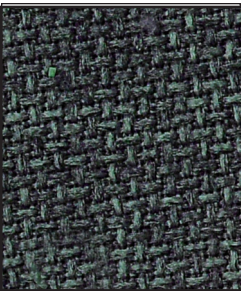
Regal
MHUS-14



Peacock
MHUS-13



Emerald
MHUS-06



Bluestone
MHUS-02



Cocoa
MHUS-04



Whistler
MHUS-17



Wolf
MHUS-18



Coal
MHUS-03