

June 1, 2017

SYNERGY COLLECTION



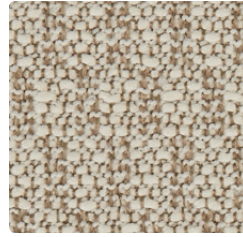
LESLIEJEE
TEXTILES



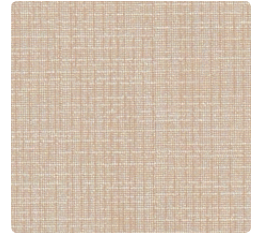
CATALYST
SPARKLE



EPIPHANY
LUMINESCENCE



INSTINCT
COMPOSURE



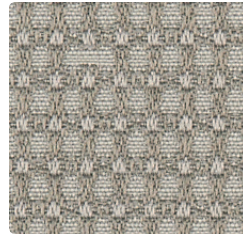
CATALYST
SHIMMER



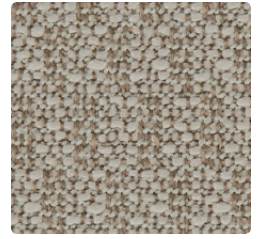
VENTURE
WHIRLWIND



PREMISE
CONCRETE



KINETIC
AERO



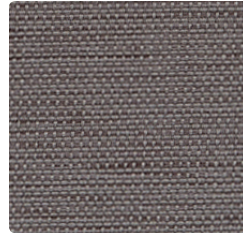
INSTINCT
ILLUSION



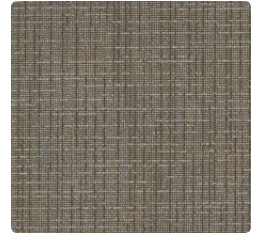
EPIPHANY
WISTFUL



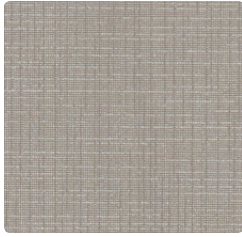
VENTURE
SILVERADO



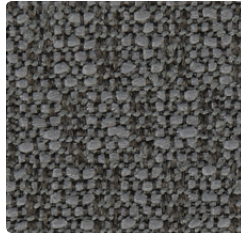
PREMISE
METAL



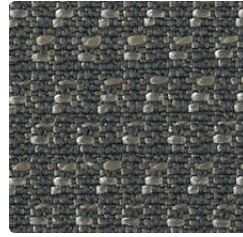
CATALYST
MICA



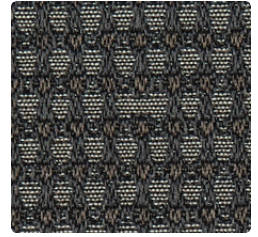
CATALYST
PEWTER



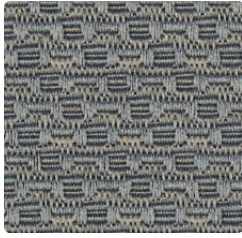
INSTINCT
GRAVITAS



IDENTITY
TECHNO



KINETIC
COSMOS



MOTTO
POLARIS



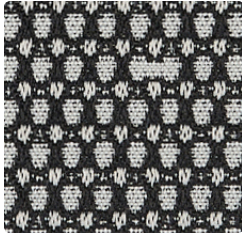
EPIPHANY
SENTIMENT



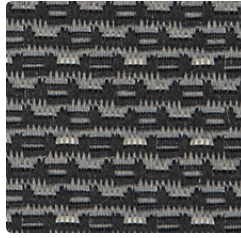
PREMISE
TUNGSTEN



VENTURE
NIGHTTIDE



KINETIC
ORION



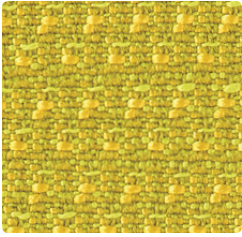
MOTTO
PHANTOM



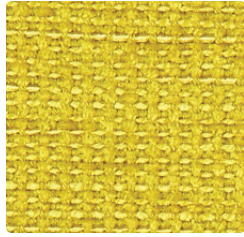
PERSONA
INCOGNITO



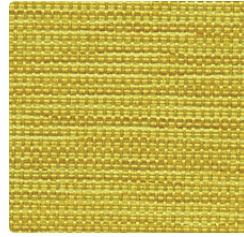
CATALYST
OBSIDIAN



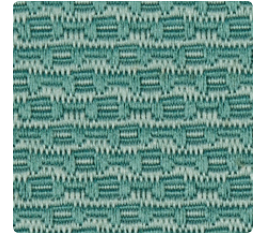
IDENTITY
CACHE



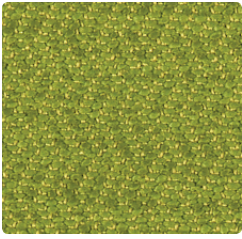
PERSONA
KISMET



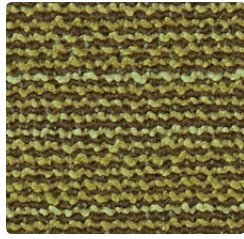
PREMISE
CHIVE



MOTTO
BREEZY



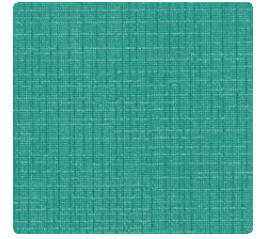
EIPHANY
LAUREL



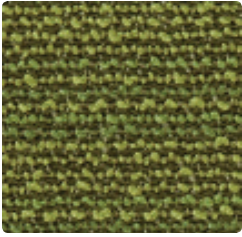
VENTURE
GROTTA



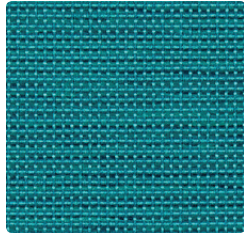
KINETIC
THERMAL



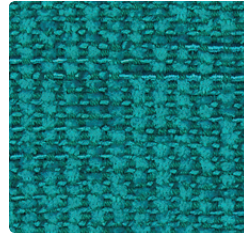
CATALYST
BERYL



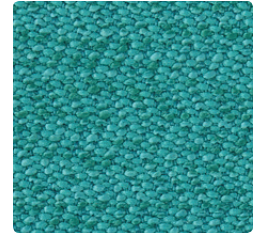
VENTURE
LUSH



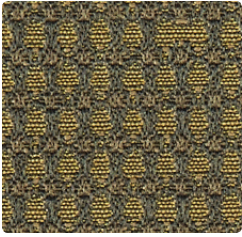
PREMISE
CAPRI



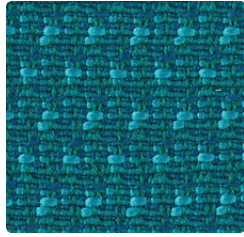
PERSONA
WONDER



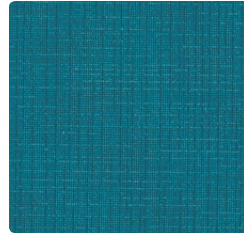
EIPHANY
HARMONY



KINETIC
ECO



IDENTITY
TRANCE



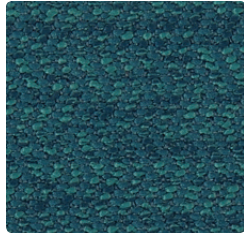
CATALYST
TOPAZ



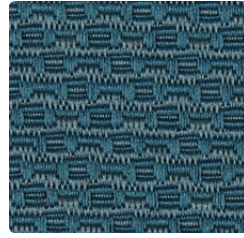
PREMISE
MONTEREY



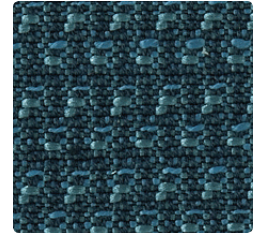
CATALYST
LAPIS



EIPHANY
RENEWAL



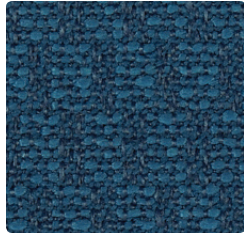
MOTTO
CHAMBRAY



IDENTITY
CYBER



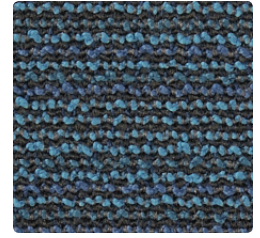
PERSONA
DREAM



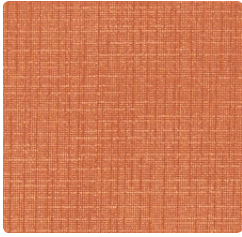
INSTINCT
BRAVADO



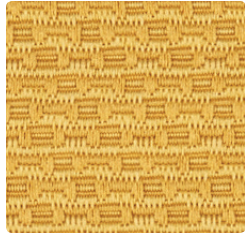
KINETIC
HYDRO



VENTURE
ESCAPEDE



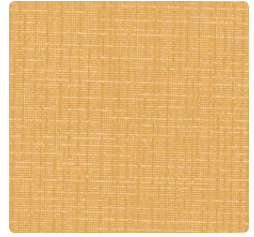
CATALYST
CITRINE



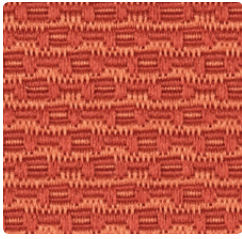
MOTTO
SOLAR



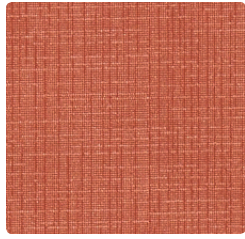
PERSONA
CHARM



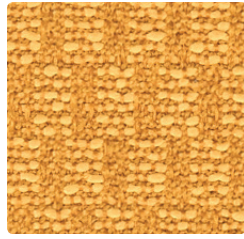
CATALYST
GLITZ



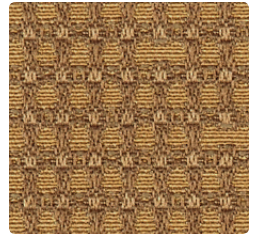
MOTTO
FLAIR



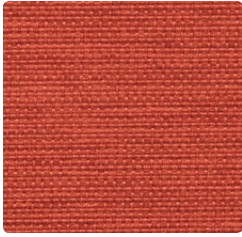
CATALYST
CARNELIAN



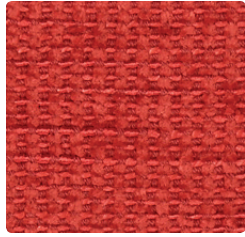
INSTINCT
DELIGHT



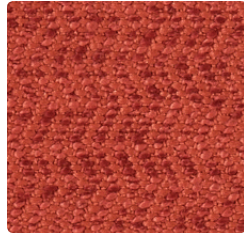
KINETIC
HALO



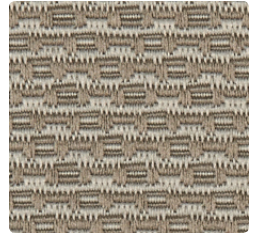
PREMISE
CADMIUM



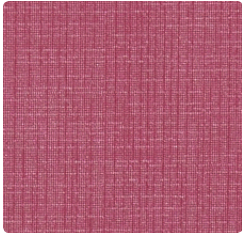
PERSONA
PANACHE



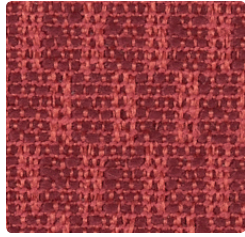
EPIPHANY
IMPULSE



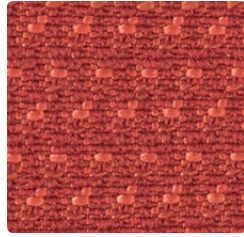
MOTTO
GREIGE



CATALYST
TOURMALINE



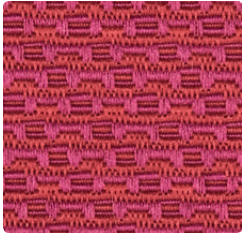
INSTINCT
PASSION



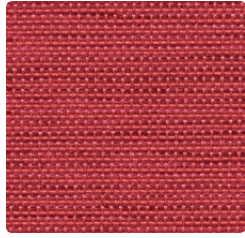
IDENTITY
HOTSPOT



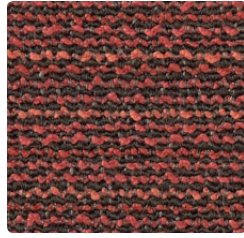
VENTURE
TRAILBLAZER



MOTTO
VIVACIOUS



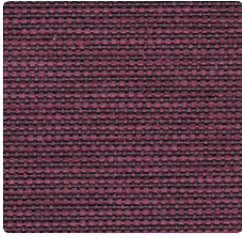
PREMISE
MAGENTA



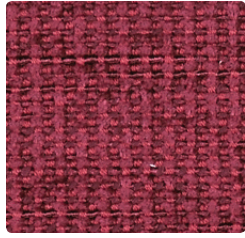
VENTURE
SUNSET



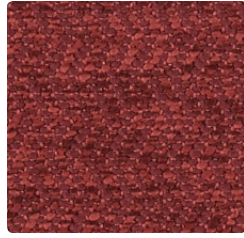
PERSONA
BRAWNY



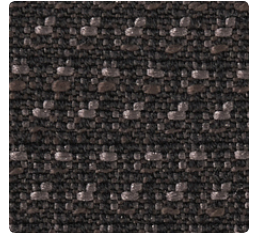
PREMISE
BERRY



PERSONA
SOUL



EPIPHANY
ROMANCE



IDENTITY
JAVA

TECHNICAL INFORMATION

Synergy Collection

Pattern	Width	Content	Finish	Backing	Repeat	Abrasion	Flammability	Cleaning Code	Grade
Catalyst	54"	100% Polyurethane PVC Free	None	Woven	None	240,000 Double Rubs	Cal TB 117-2013 NFPA260/ UFAC Class 1	L B/C	2
Epiphany	54"	53% Polyester; 47% Post Industrial Recycled Polyester	SR	Acrylic	None	100,000 Double Rubs	Cal TB 117-2013 NFPA260/ UFAC Class 1	WS	2
Identity	55"	100% Polyester	SR	Acrylic	.50"L x .25" W	100,000 Double Rubs	Cal TB 117-2013 NFPA260/ UFAC Class 1	WS	1
Instinct	56"	59% Polyester; 41% Post Industrial Recycled Polyester	SR	Acrylic	None	100,000 Double Rubs	Cal TB 117-2013 NFPA260/ UFAC Class 1	WS	2
Kinetic	58"	54% Post Consumer Recycled Polyester; 46% Polyester	SR	Latex	6.5"L x .75" W	100,000 Double Rubs	Cal TB 117-2013 NFPA260/ UFAC Class 1	WS	3
Motto	56"	50.2% Polyester; 49.8% Post Industrial Recycled Polyester	SR	Acrylic	.50"L x .125" W	100,000 Double Rubs	Cal TB 117-2013 NFPA260/ UFAC Class 1	WS	2
Persona	54"	97.8% Polyester; 2.2% Rayon	SR	Acrylic	None	100,000 Double Rubs	Cal TB 117-2013 NFPA260/ UFAC Class 1	WS	2
Premise	57"	100% Polyester	SR	Acrylic	None	100,000 Double Rubs	Cal TB 117-2013 NFPA260/ UFAC Class 1	WS	1
Venture	55"	100% Polyester	SR	Acrylic	.75"L x .0" W	100,000 Double Rubs	Cal TB 117-2013 NFPA260/ UFAC Class 1	WS	2

All patterns meet or exceed ACT performance guidelines.

Cleaning Information

B/C: Bleach Cleanable. 1 part bleach to 4 parts water (1:4). Always rinse promptly with clean water after applying the bleach solution. Do not clean/disinfect the fabric longer than 10 minutes using the bleach solution. Failure to do so will void all warranties.

L: Clean with mild soap and water. Rinse any cleaning agent thoroughly with water and wipe with a clean cloth.

WS: Clean with water-based cleaning agents, foam or pure water-free solvent. Vacuuming or light brushing is recommended to prevent dust and soil buildup.

Performance : Catalyst

Hydrolysis ISO 1419 - Passed 6 weeks with no cracking, peeling or delamination. Woven backing for ease of upholstery. Anti-bacterial & anti-microbial.



14815 Radburn Ave.
Santa Fe Springs, CA 90670



LESLIEJEE
TEXTILES

Phone (562) 802-0464 Email sales@ocisitwell.com
Toll Free Fax (866) 624-9662
Toll Free Phone (866) 624-4968

Please visit our Website
www.ocisitwell.com

For memos samples, please visit www.lesliejeetextiles.com/samples
www.lesliejeetextiles.com O 714.848.7200 F 714.845.7572