

**BERTOLINI®**

**IMPRESSIONS SERIES**



The **Impressions Series** features a unique design that makes it the best, maintenance-free pew stacking church chair on the market. The chair is completely manufactured in the USA and available in two widths, 20 inch and 22 inch. This flagship product from Bertolini is customizable and unmatched for quality and comfort. Highlights include the proprietary, “aerospace grade” molded foam for improved durability and comfort, patented FormFlex seat, and award-winning Ergo-V backrest with sound dampening silhouette styling. These chairs make it easy to provide the best experience for your members.

## PRODUCT FEATURES

- 1** Built and sourced locally for a high quality chair that lasts longer and maintains its professional appearance
- 2** Features a zero-maintenance design including screwless attachment points and replaceable backs/seats
- 3** Provides unbeatable ergonomic support with the proprietary Ergo-V back design
- 4** Choose from a lumbar cutout back or a full-length back
- 5** Zero-maintenance bootied glides (available in black or clear) protect your floors
- 6** Backed by a rock-solid warranty for the non-wearing, commercial-grade upholstery
- 7** Choose from over 50 standard fabrics and hundreds of designer fabrics
- 8** Select standard pew ganging or radius ganging free of charge
- 9** FormFlex™ seat base for enhanced comfort and durability

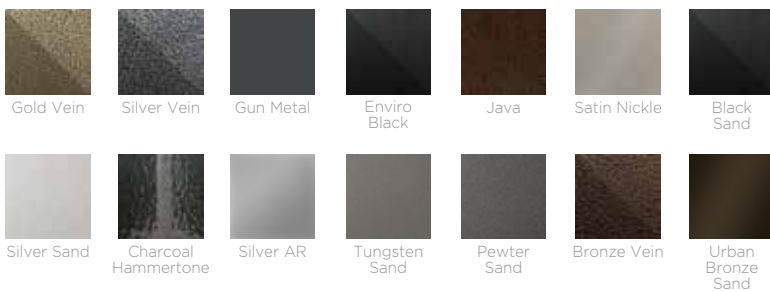


## STANDARD FABRIC OPTIONS

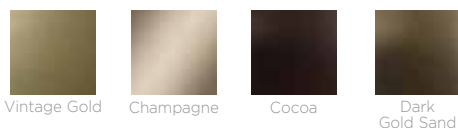
(See [bertolinidirect.com](http://bertolinidirect.com) for a wide variety of fabric options)



## GRADE I FRAME FINISHES



## GRADE II FRAME FINISHES



### BERTOLINI MODULAR SYSTEM

All Bertolini models, including arm chairs, interlock with each other to provide mix and match modular flexibility.



## FULLY UPHOLSTERED OUTER BACK

The fully upholstered back provides superior comfort, durability, sound absorption, and a refined look. The new clamshell back also provides the ability to replace backs in the field if needed.

## FABRIC

Choose from more than 50 standard fabrics and hundreds of designer fabrics with C.O.M. (Customer's Own Material) option available upon approval (allow 0.8 to 1.3 yards of standard width fabric depending on the model).

## STRONGEST FRAME

The 16-gauge bar system features 1010 cold-rolled carbon steel with integrated torsion that provides extra strength—all made in the USA!

## FINISH

The ultra-durable powder coat is electrostatically applied and baked at over 400°, and then saltwater tested for more than 800 hours.



## ERGO-V ERGONOMIC BACK FOUNDATION

The multi-contoured V-shape design supports the lower back and cradles the upper shoulders. This proprietary support system provides ergonomic comfort and more durability than a plywood foundation.

## ZERO-MAINTENANCE DESIGN

No longer needs fasteners and allows for easy replacement of seats in the field if needed.

## AEROSPACE GRADE MOLDED FOAM

Molded "aerospace grade" foam provides added comfort and durability.

## STACK BUTTONS

Protect your investment with extra-wide buttons for efficient stacking.



## RETRACTABLE INTERLOCK GANGING

The retractable standard ganging interlocks easily mount under your chair to link into rows.



## FormFlex™ SEAT

The patented FormFlex seat insert is standard on all chairs and features concentric oval patterns designed to flex with the weight of the user.



## RADIUS GANGING

The radius interlocks allow enough space to form a gentle curve. Available at no additional charge.



## BOOTED GLIDES

The noncorrosive, zero-maintenance, booted glides protect your chairs and your floors, and prevent swivel-glide failure.



## STANDARD GANGING

The straight interlocks hold chairs tightly together. Available at no extra charge.



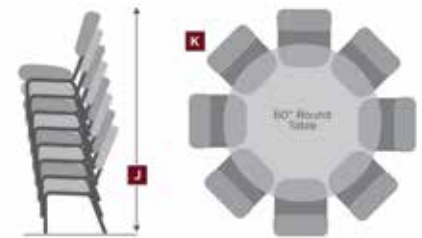
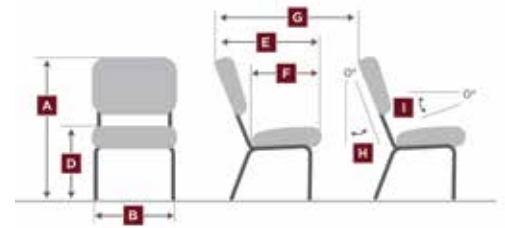
## ARMS

Optional chair arms are available with a height of 26.7 inches (67.9 cm) from the floor to the top of the arms.

## SPECIFICATIONS

	20-IN WIDE (STANDARD)	ARM CHAIR	22-IN WIDE
OVERALL HEIGHT (A)	35 in (89 cm)	35 in (89 cm)	35 in (89 cm)
OVERALL WIDTH (B)	20.25 in (51.4 cm)	23 in (58.4 cm)	22 in (55.9 cm)
SEAT WIDTH (C)	20 in (50.8 cm)	20 in (50.8 cm)	22 in (55.9 cm)
SEAT HEIGHT (D)	18.75 in (47.6 cm)	18.75 in (47.6 cm)	18.75 in (47.6 cm)
ARM HEIGHT	n/a	26.75 in (68 cm)	n/a
DEPTH (E)	26.3 in (66.8 cm)	26.3 in (66.8 cm)	26.3 in (66.8 cm)
SEAT DEPTH (F)	18.25 in (46.4 cm)	18.25 in (46.4 cm)	18.25 in (46.4 cm)
WEIGHT	16.3 lbs (7.4 kg)	19.5 lbs (8.8 kg)	17.4 lbs (7.9 kg)
RECOMMENDED EGRESS (G)	36 in (91.4 cm)	36 in (91.4 cm)	36 in (91.4 cm)
BACK PITCH (H)	17.5°	17.5°	17.5°
SEAT PITCH (I)	7°	7°	7°
STACKS (J)	8 high	6 high	6 high
AROUND 60-IN ROUND (K)	6 - 8	5 - 7	5 - 7
GLIDES	Black (Standard) or Clear (w/ upcharge)	Black (Standard) or Clear (w/ upcharge)	Black (Standard) or Clear (w/ upcharge)
FABRIC YARDAGE	0.80 - 1.3 yards	0.80 - 1.3 yards	0.80 - 1.3 yards

## MEASUREMENT GUIDE



## BACK STYLES



PASSIVE LUMBAR  
(Standard)



FULL LENGTH

## OPTIONAL ACCESSORIES

(See [bertolinidirect.com](http://bertolinidirect.com) for our large collection of customizable options)



BOOK RACK



COMMUNION CUP HOLDER



CARD AND PENCIL HOLDER



CARD AND CUP HOLDER



COFFEE CUP HOLDER

## CARTS



STANDARD CHAIR DOLLY: 24 INCH



HEAVY-DUTY 5-WHEEL DOLLY

### NO HASSLE WARRANTY

Bertolini is part of the MITY Incorporated family of product brands. MITY warrants all Bertolini chairs. Read complete details about the warranty at [bertolinidirect.com/warranty](http://bertolinidirect.com/warranty).

### STANDARDS

Impressions Series chairs meet or exceed all applicable tests from ANSI / BIFMA X 5.1-2002. All upholstery and foam meet or exceed California Bulletin 117-2013.

### SUSTAINABILITY

Impressions Series chairs are GREENGUARD Certified® and qualify for credits through LEED® and other sustainable building programs.

