



Finishes

Casegoods, Tables and Seating



Finishes

Finish representations are professionally developed for accuracy and shown at a reduced scale. Natural variations in the wood and the printing process may affect color appearance. If exact color matching is necessary, it is recommended that actual samples be reviewed before placing the product order.



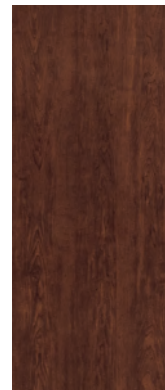
**Fusion Maple
(FM)**



**Pencil Wood
(PW)**



**Rogue Valley Pear
(RP)**



**Cocoa Maple
(CM)**



**Colombian Walnut
(CW)**



**Sarek Ash
(SK)**



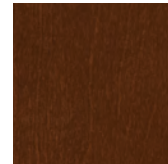
**Sterling Ash
(ST)**



**Graphite
(GP)**



**Black Riftwood
(BR)**



**Black
(BLK)**



**Sarek Ash
(SK)**



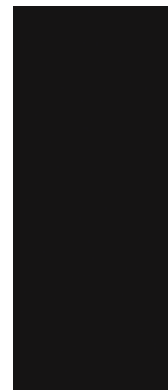
**Sterling Ash
(ST)**



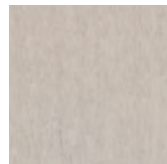
**Graphite
(GP)**



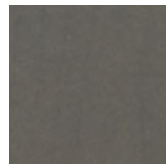
**Black Riftwood
(BR)**



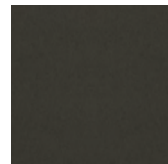
**Black
(BLK)**



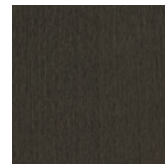
**Sarek Ash
(SK)**



**Sterling Ash
(ST)**



**Graphite
(GP)**



**Black Riftwood
(BR)**



**Black
(BLK)**

Laminate

Thermally fused laminates provide uniform coloration and pattern as well as high-performance durability for lasting value.

Seating

Low-gloss lacquer top coat seating finishes are available as standard on our wood seating products applied to exposed wood components and color-matched to coordinate with laminate finishes.