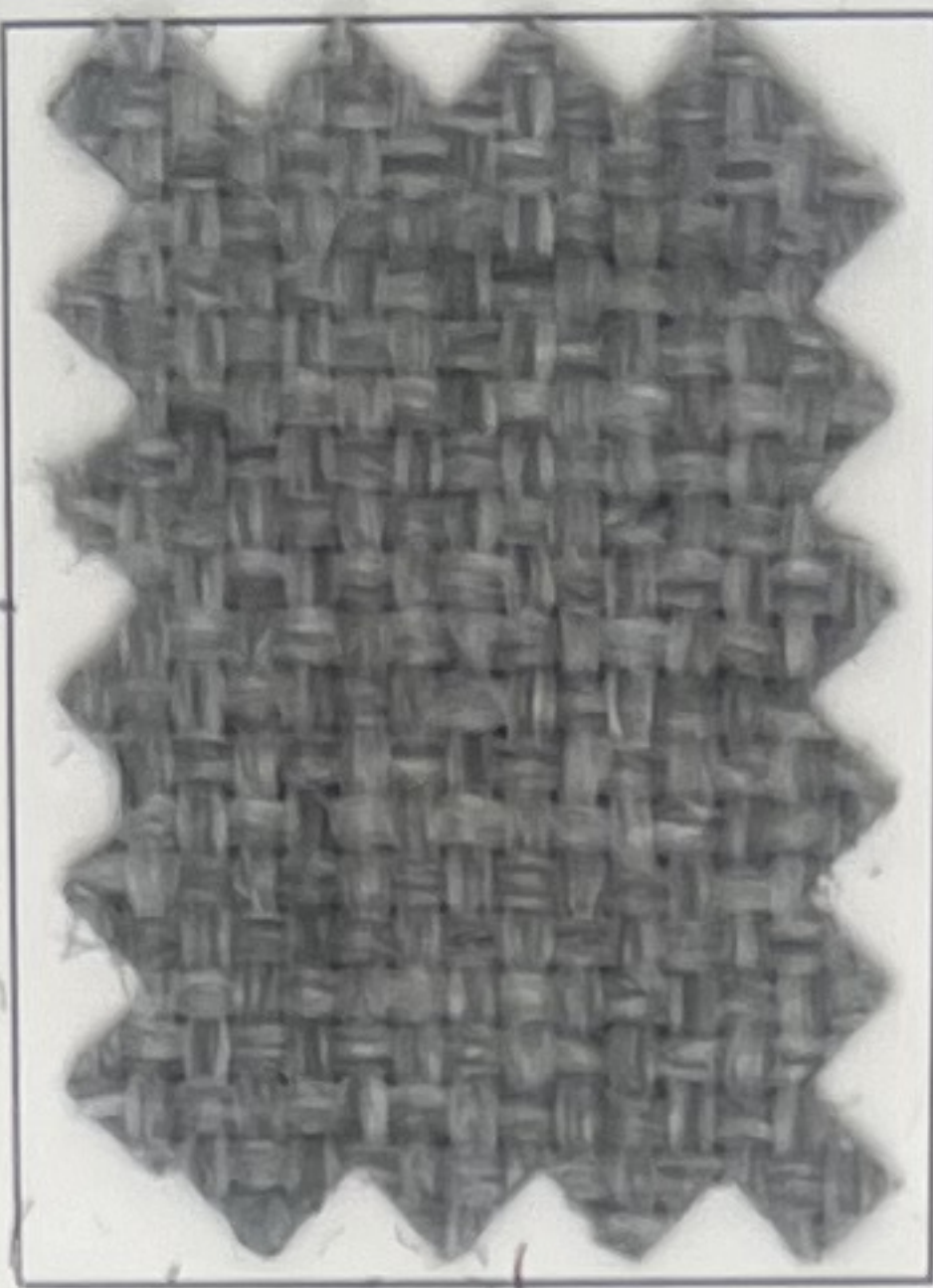
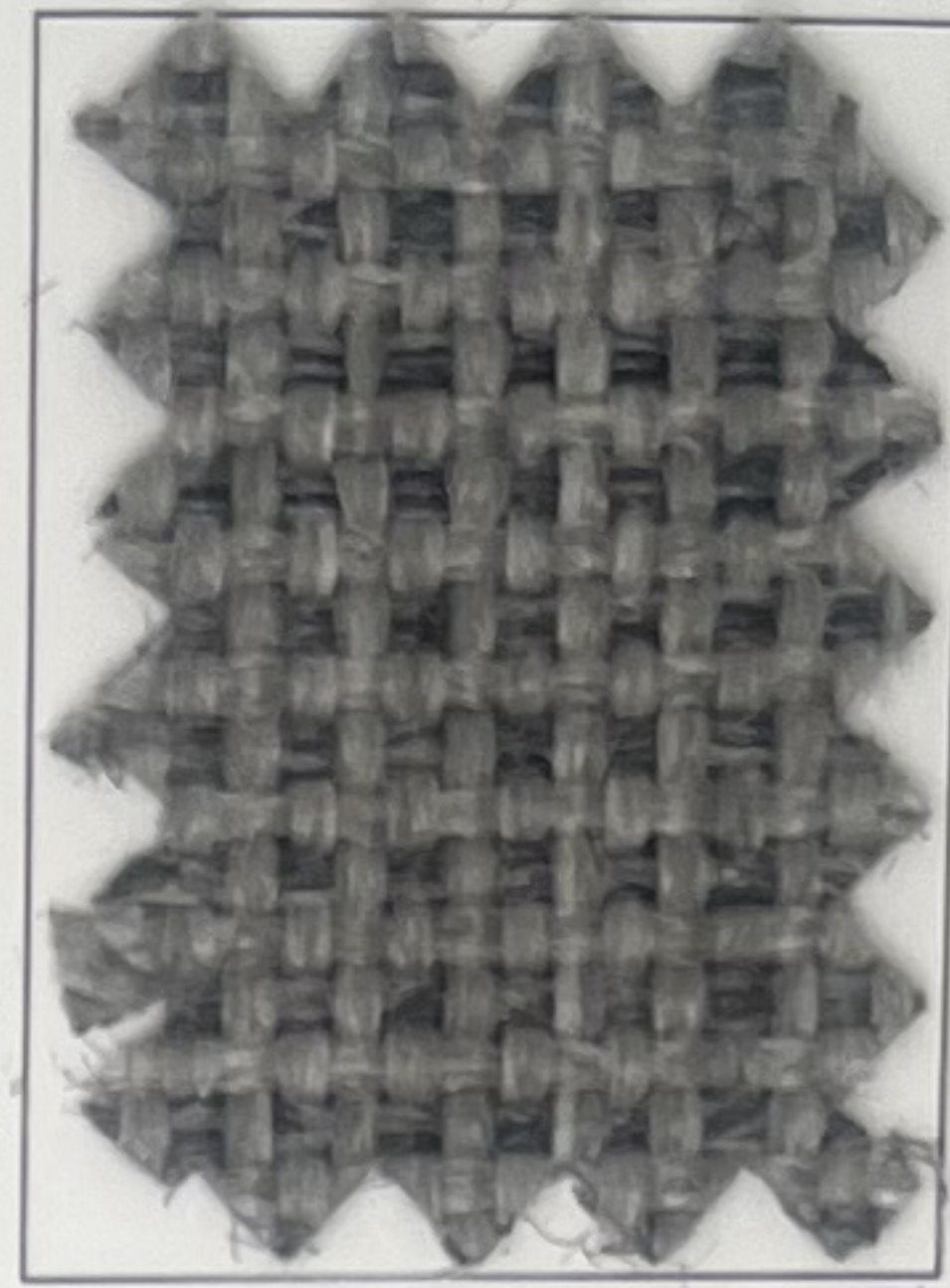


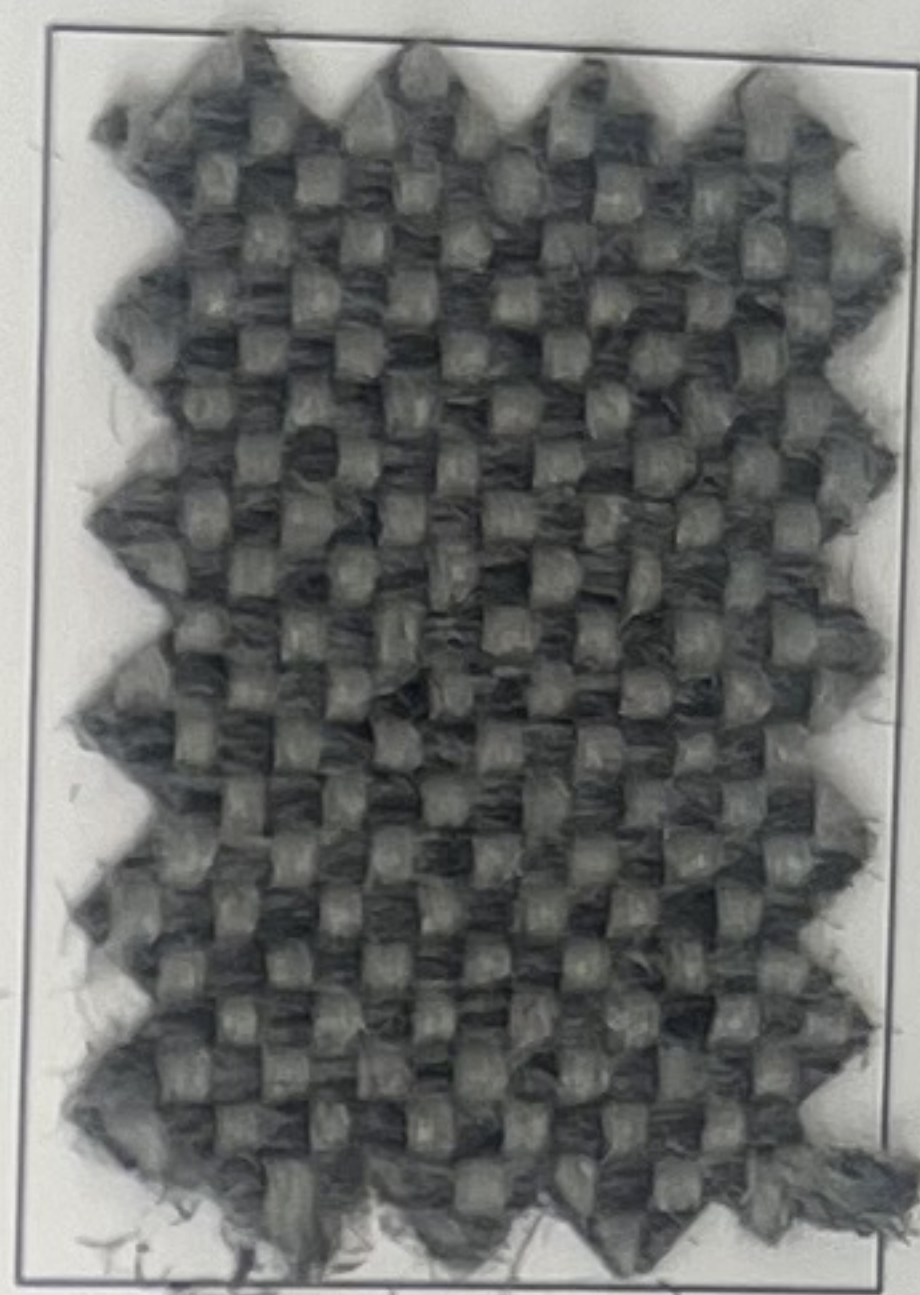
Flint



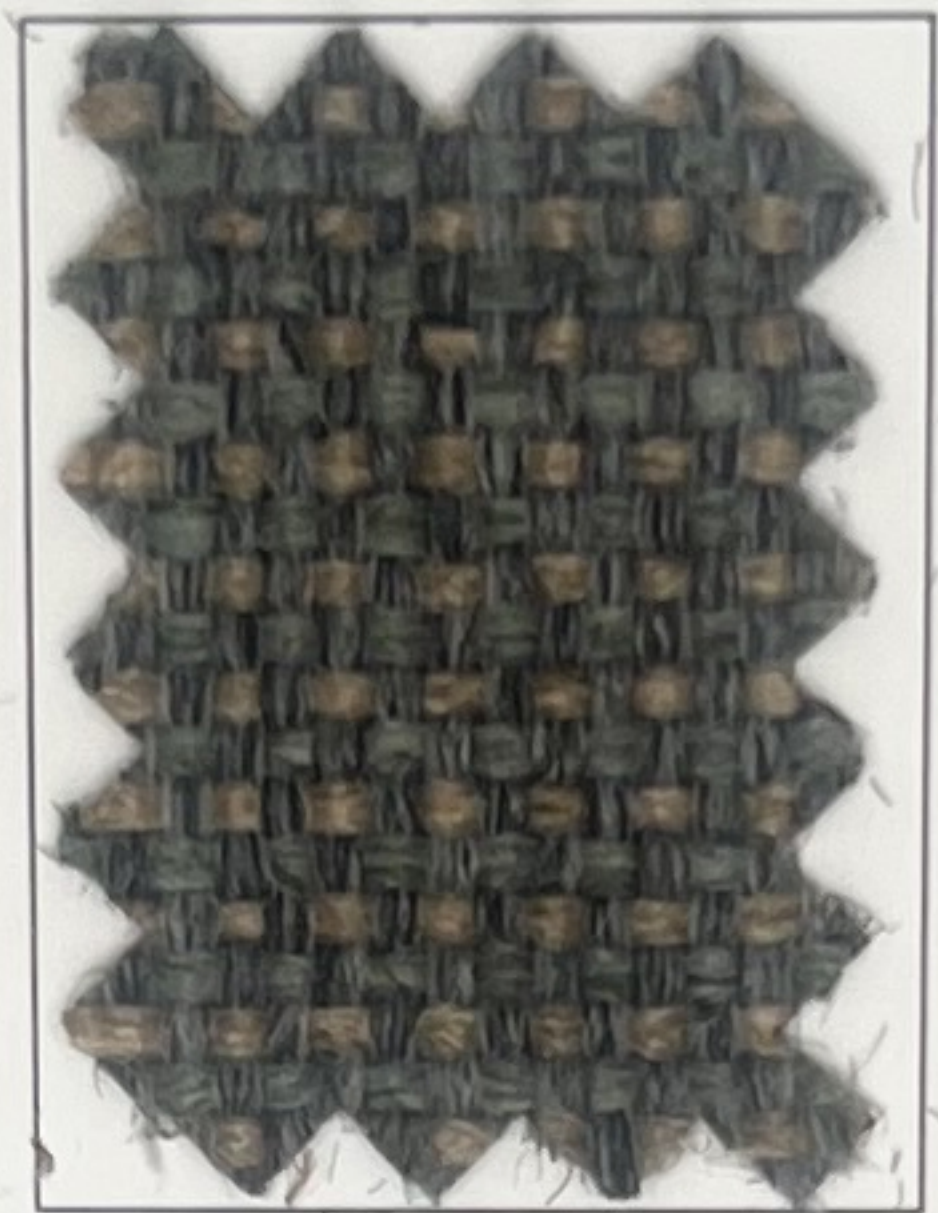
Oyster



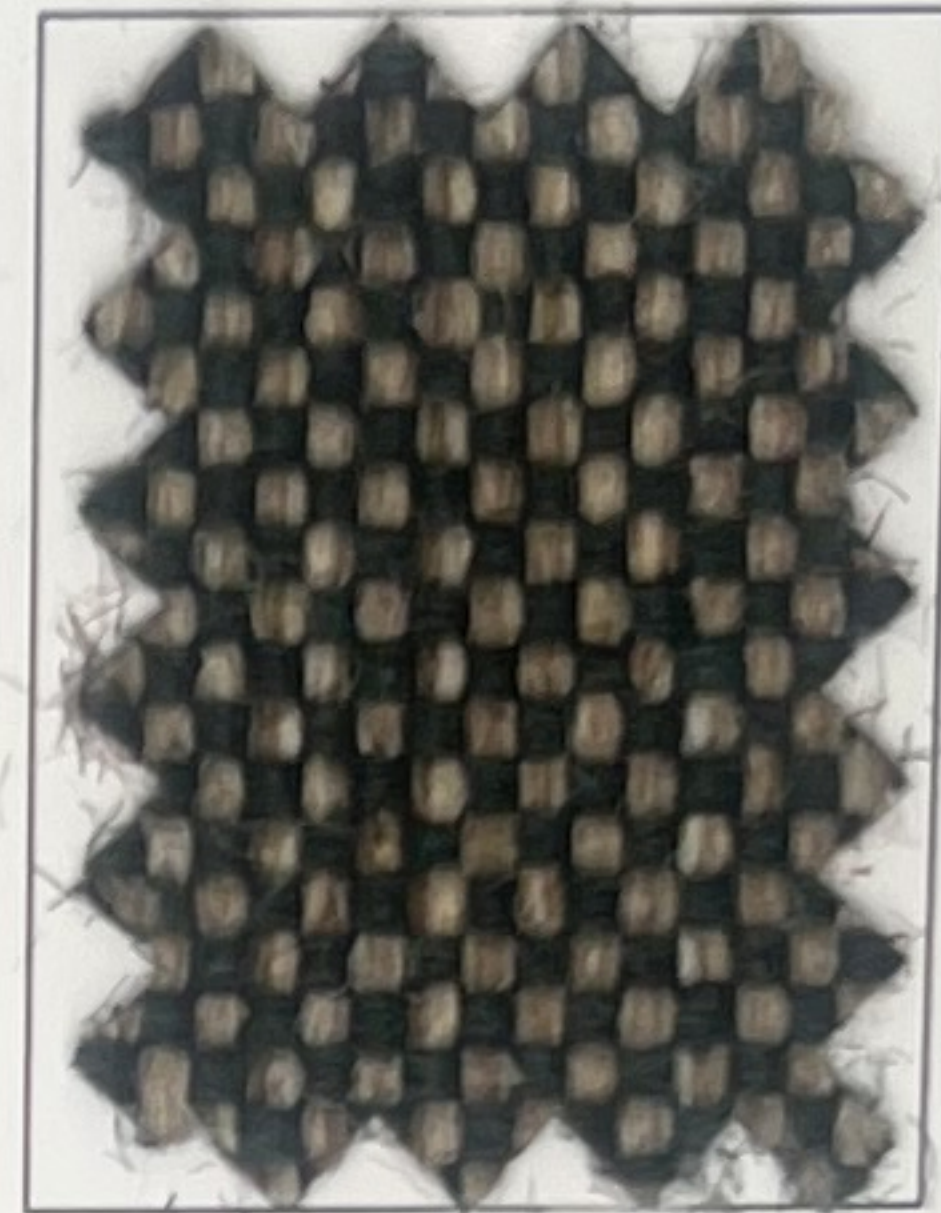
Platinum



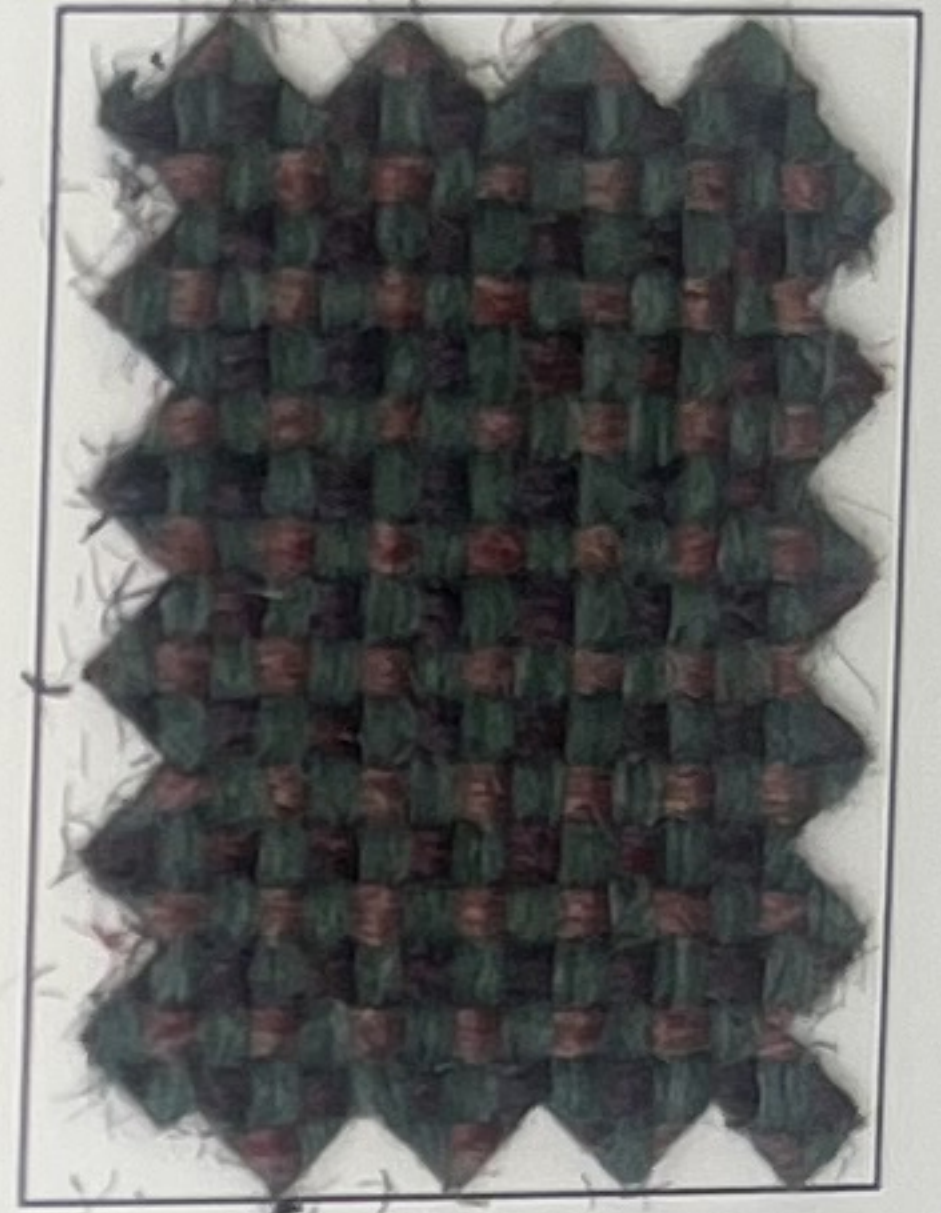
Charcoal



Serene



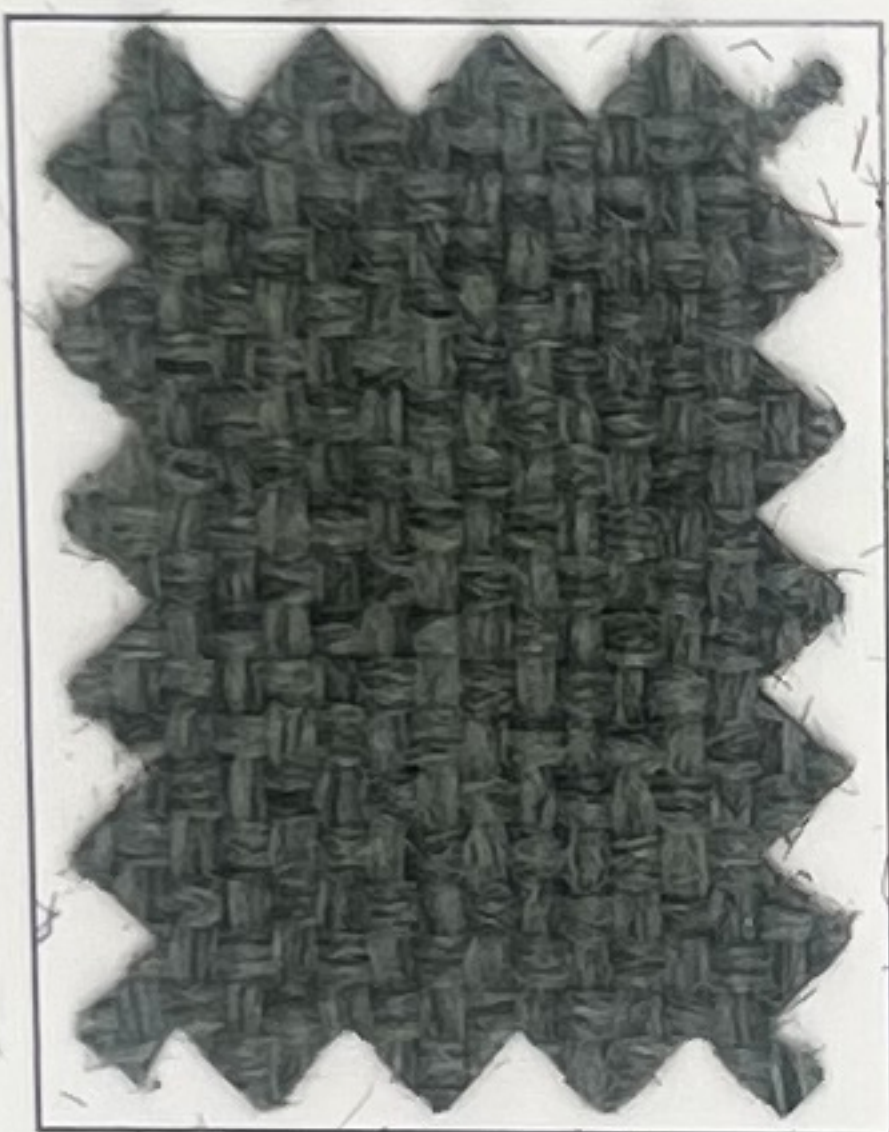
Thorton



Basil



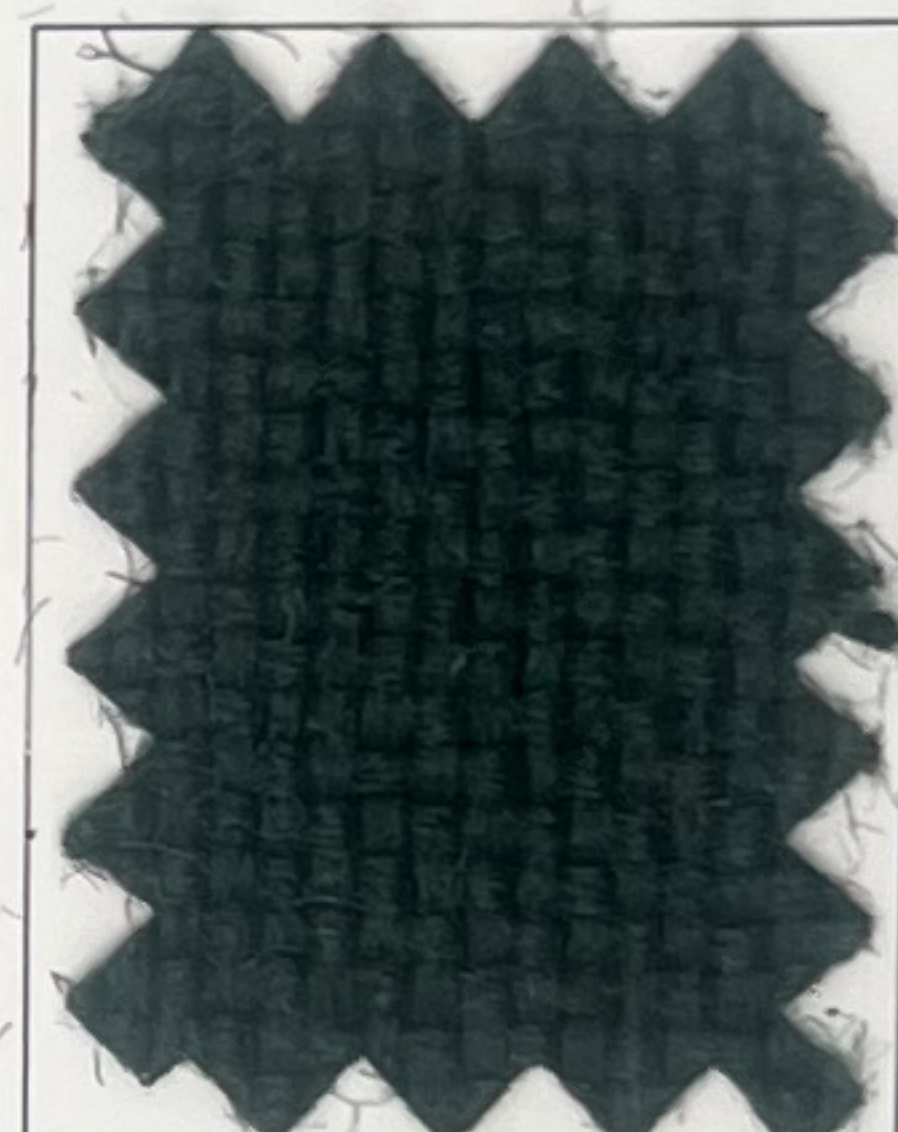
Salem



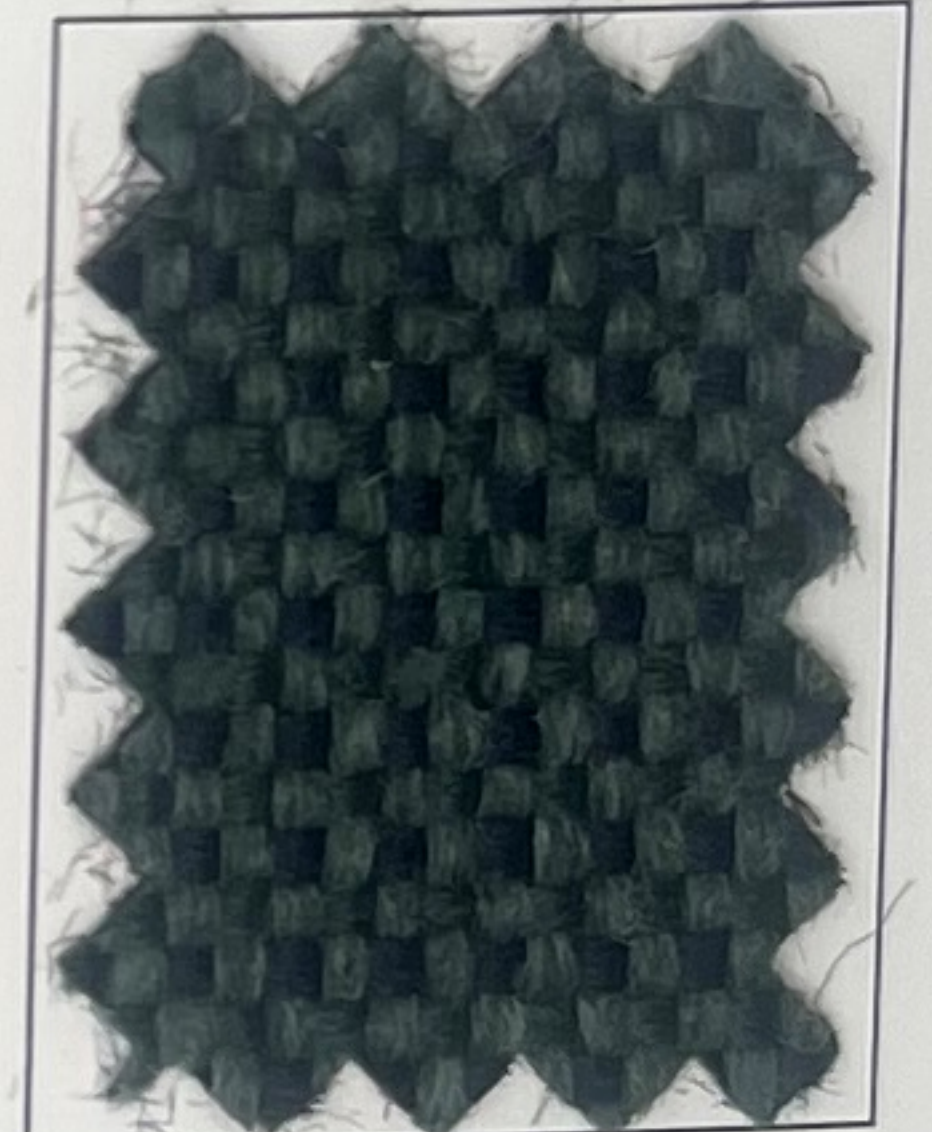
Sage



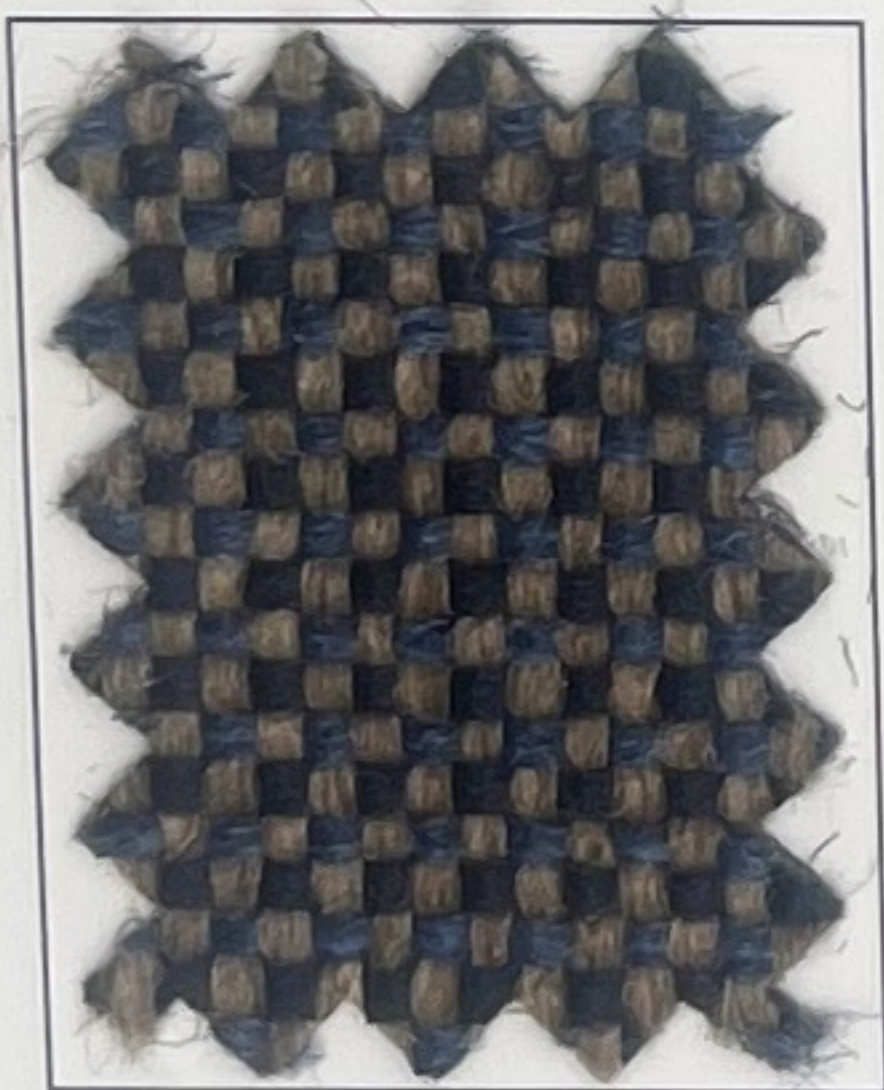
Aspen



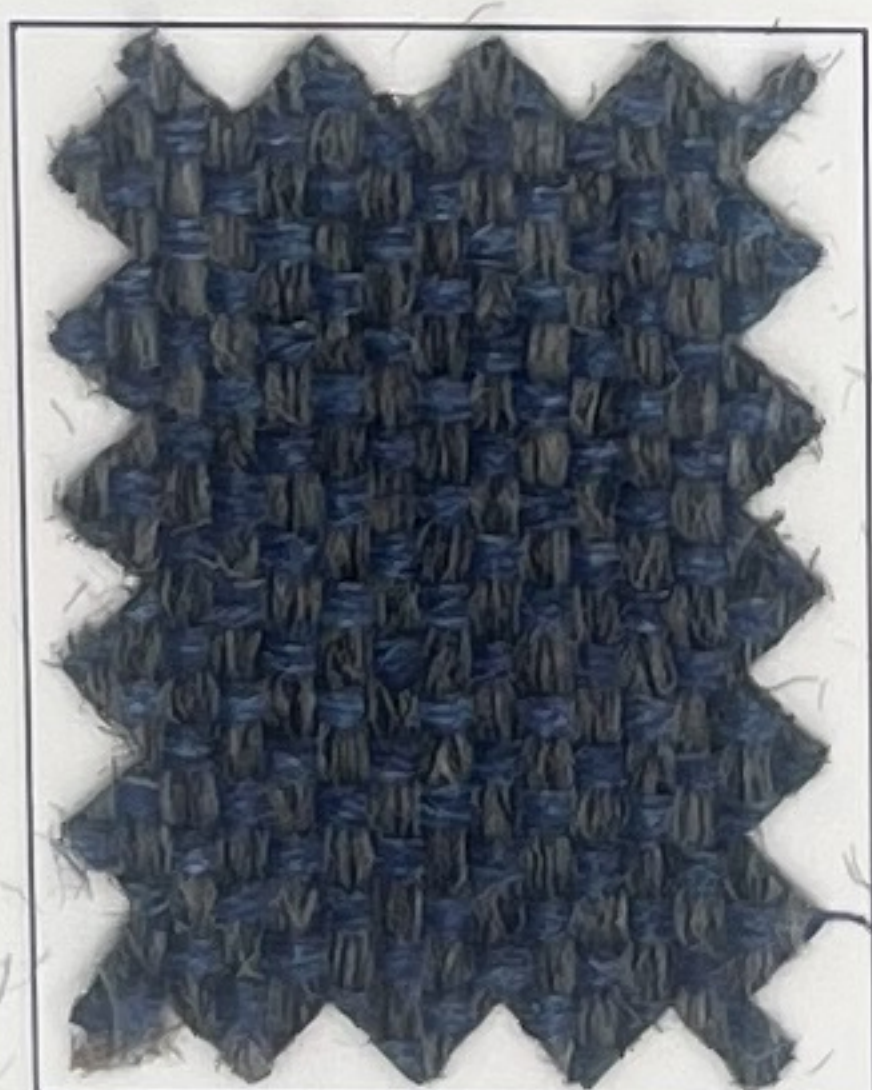
Emerald



Tarragon



Earth



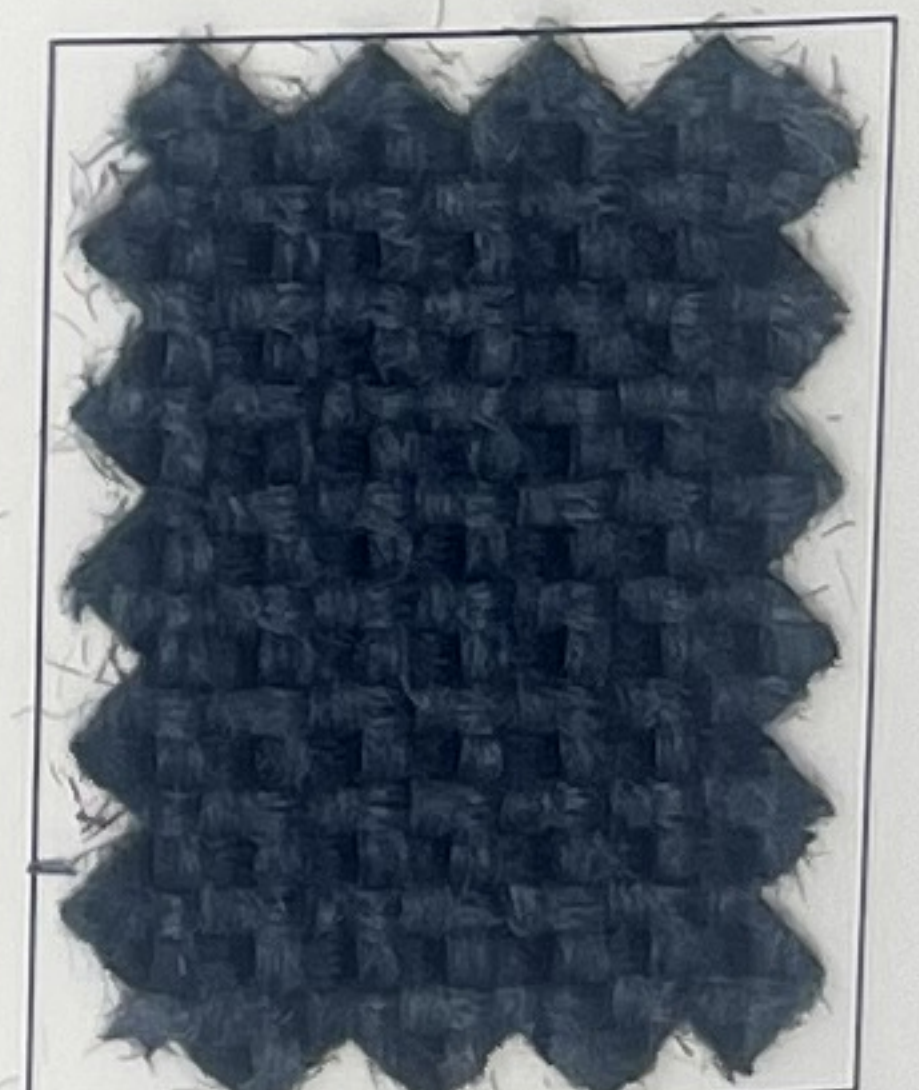
Highlands



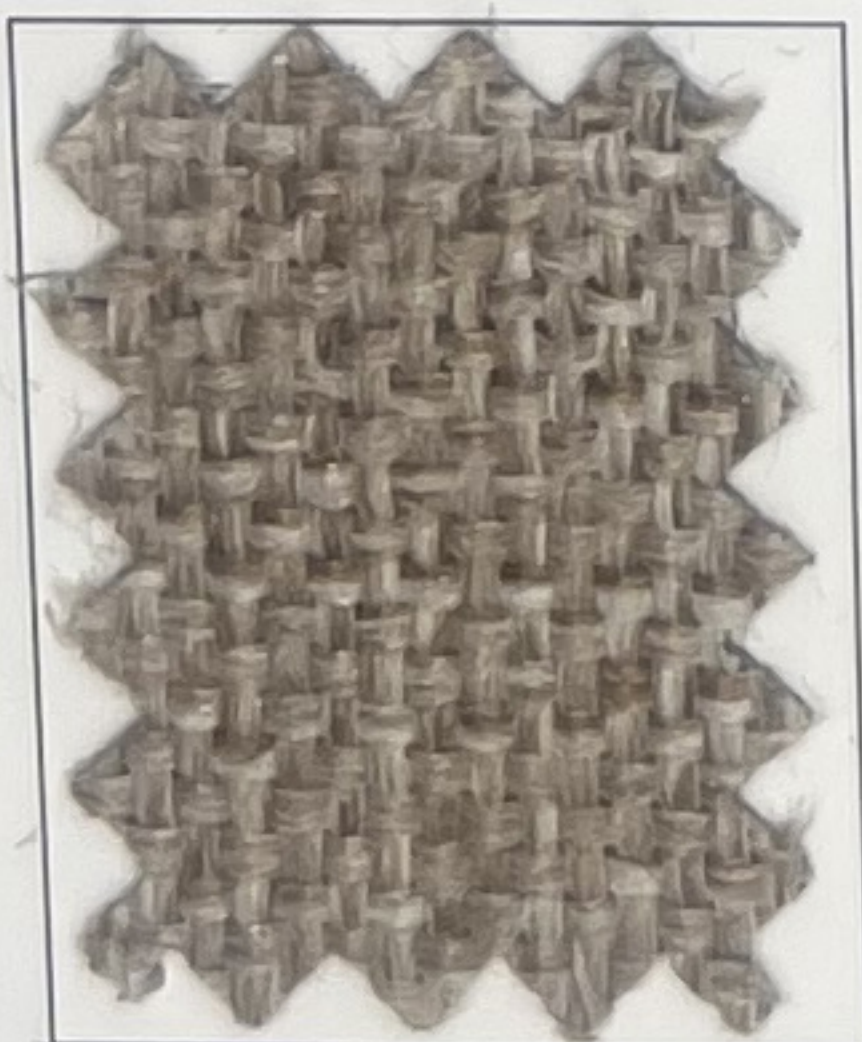
Denim



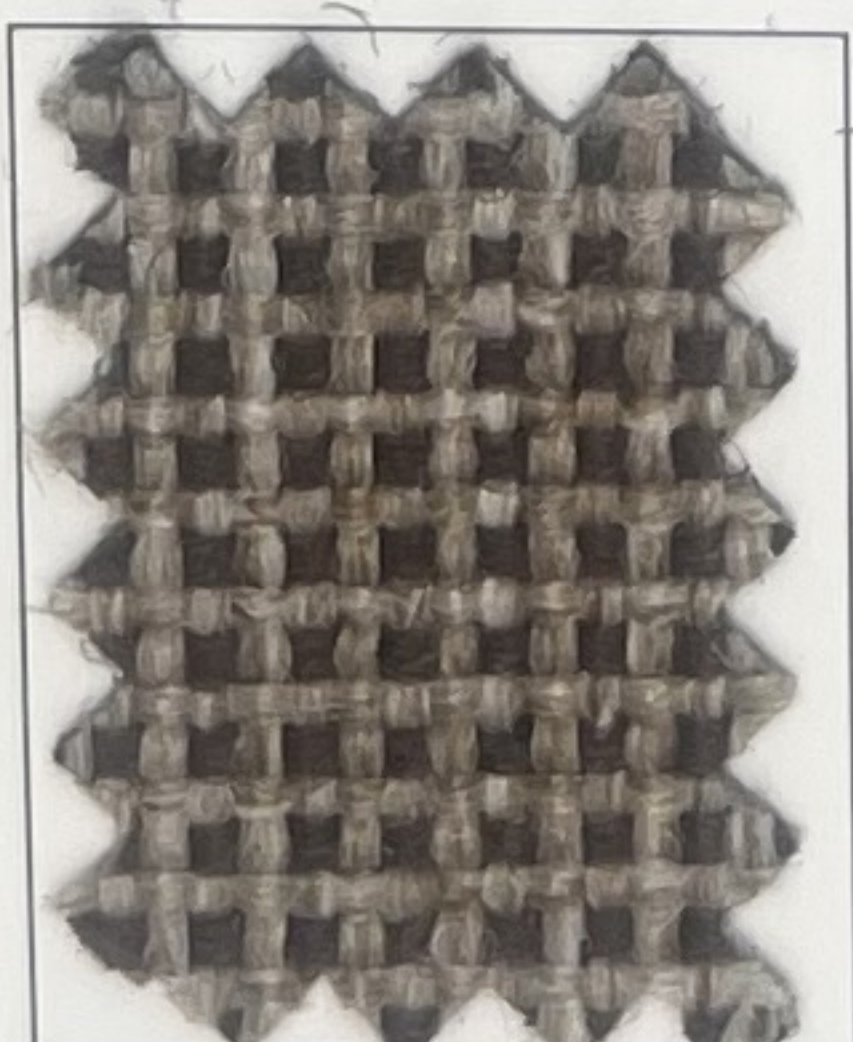
Sapphire



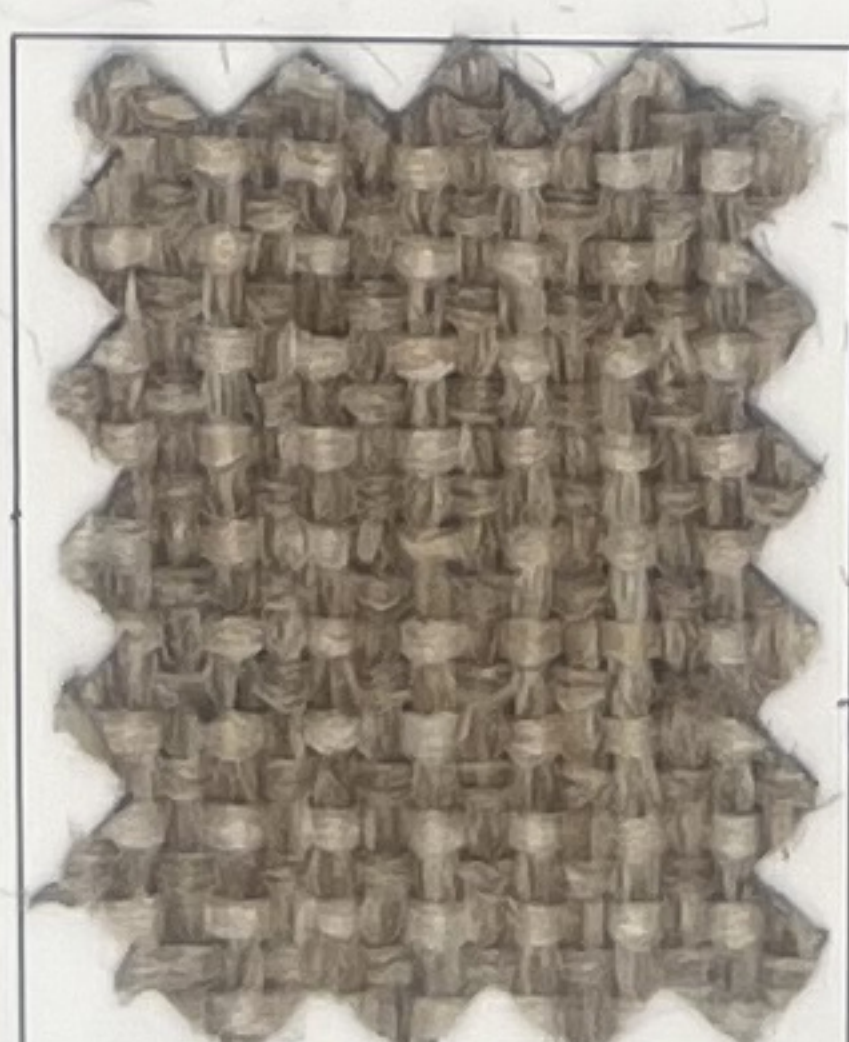
Federal



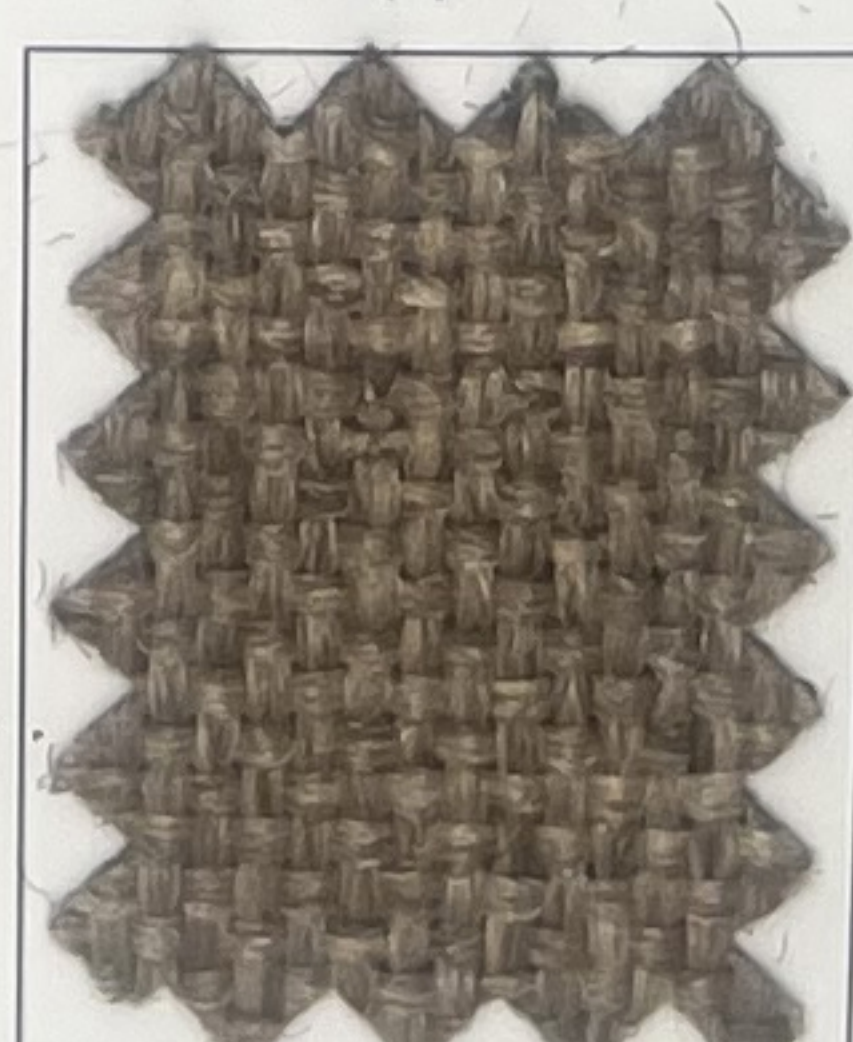
Walnut



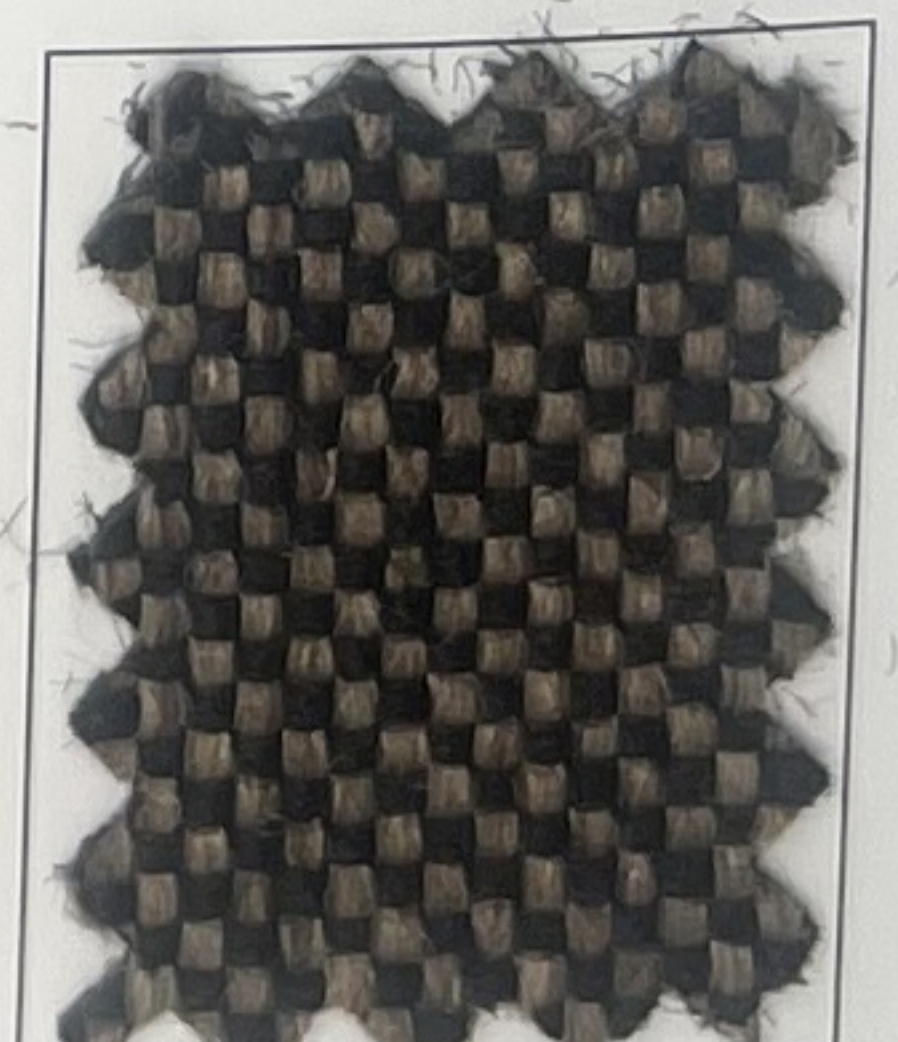
Tumbleweed



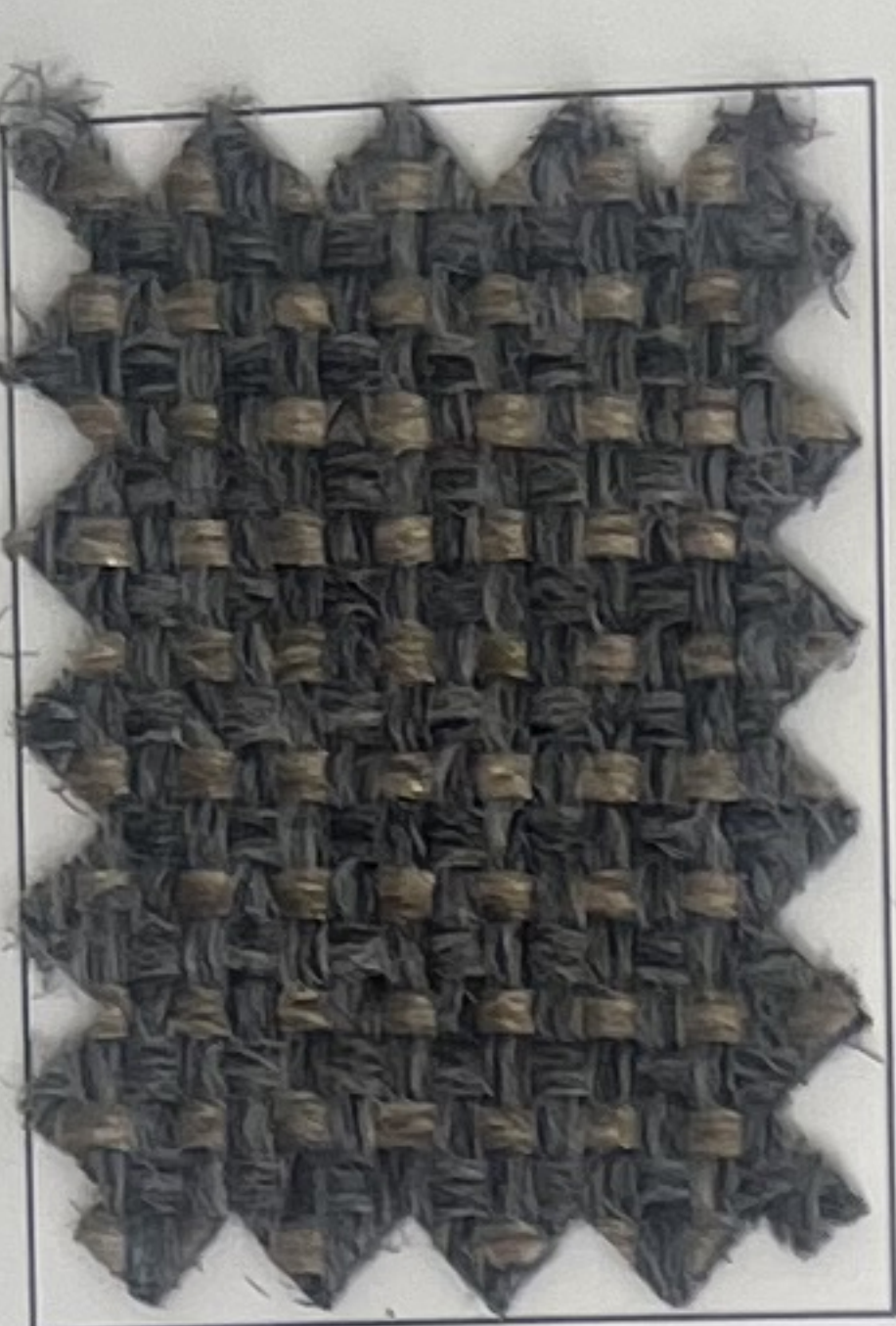
Arrowood



Khaki



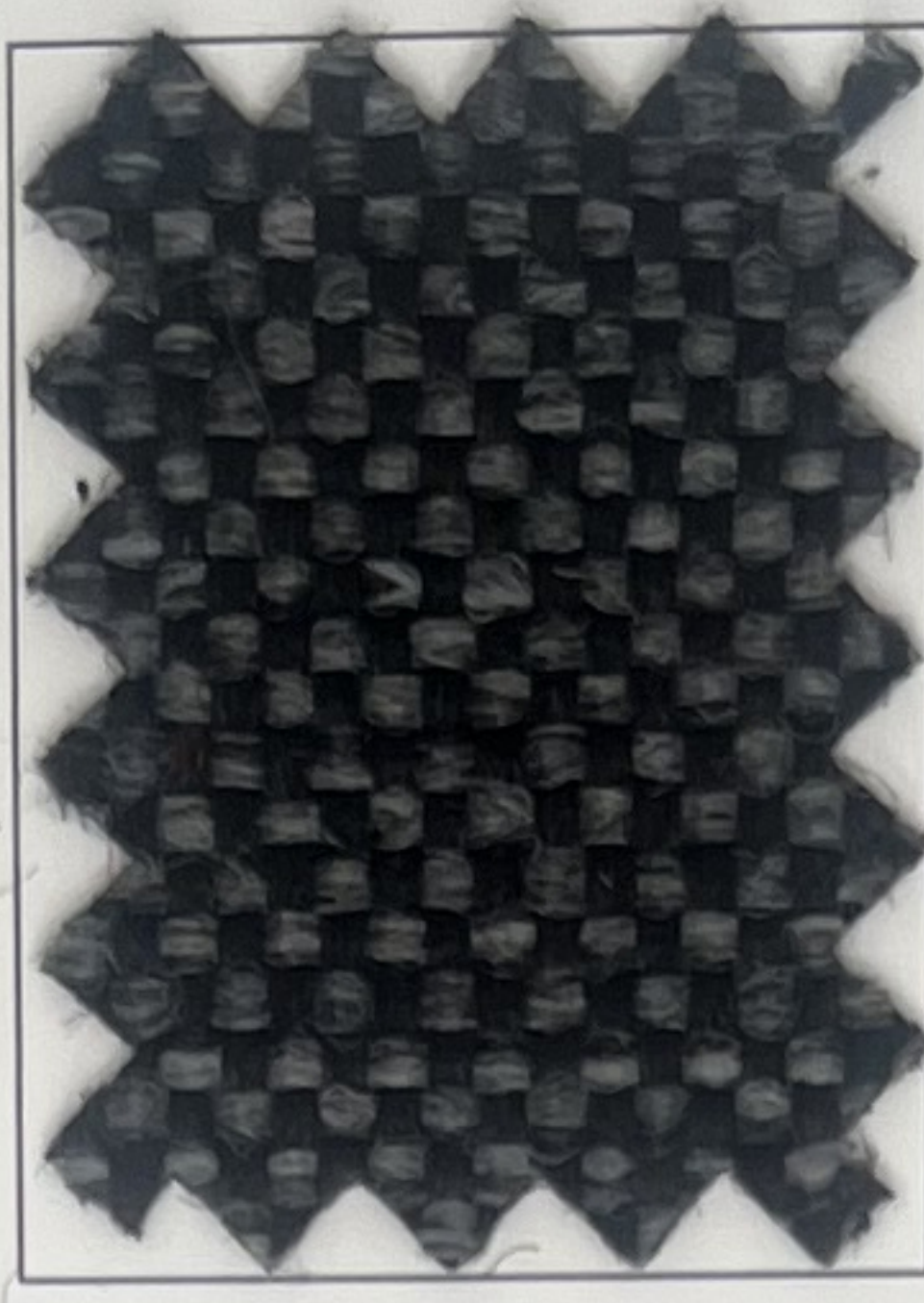
Gold Dust



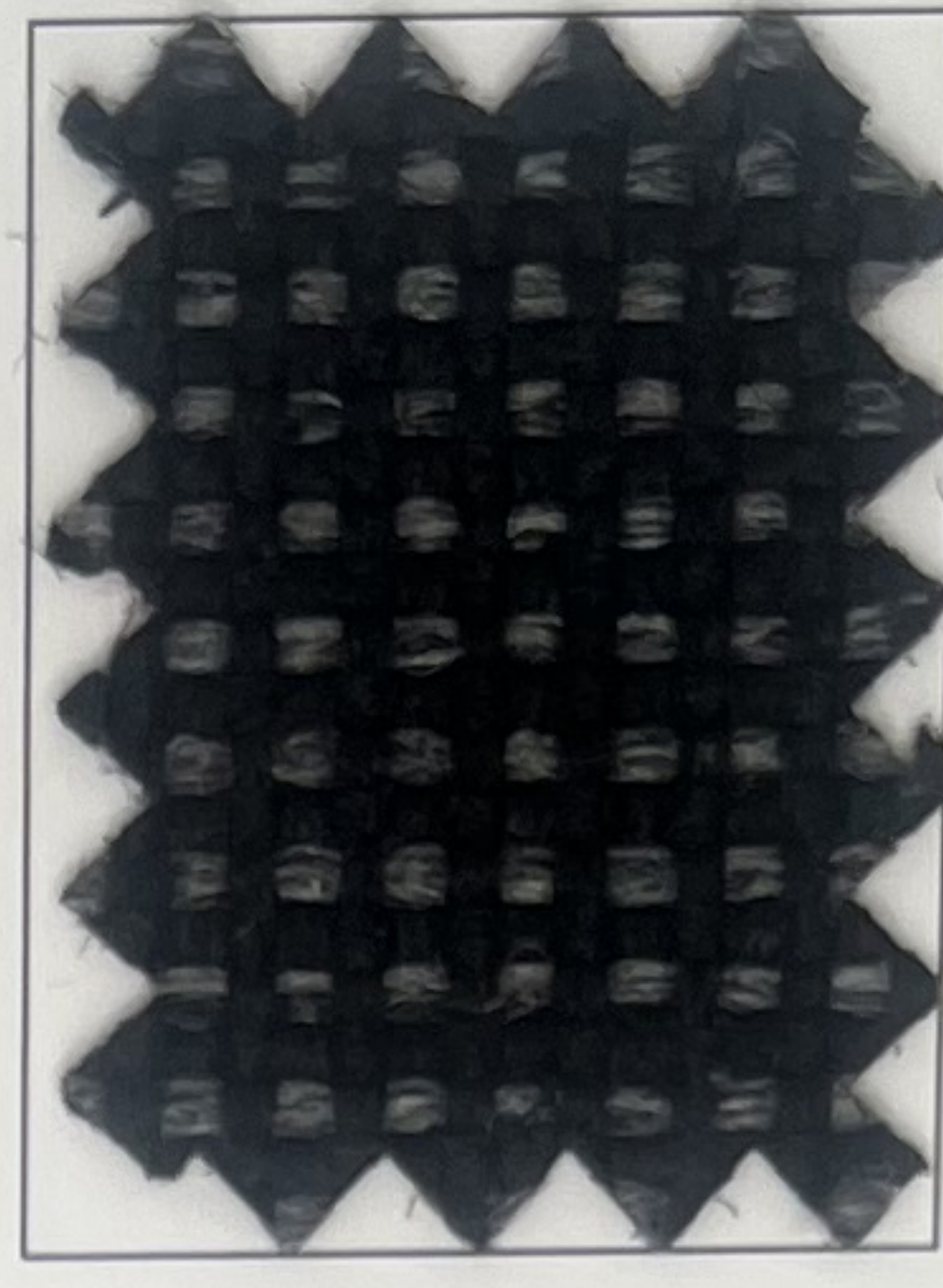
Ashley



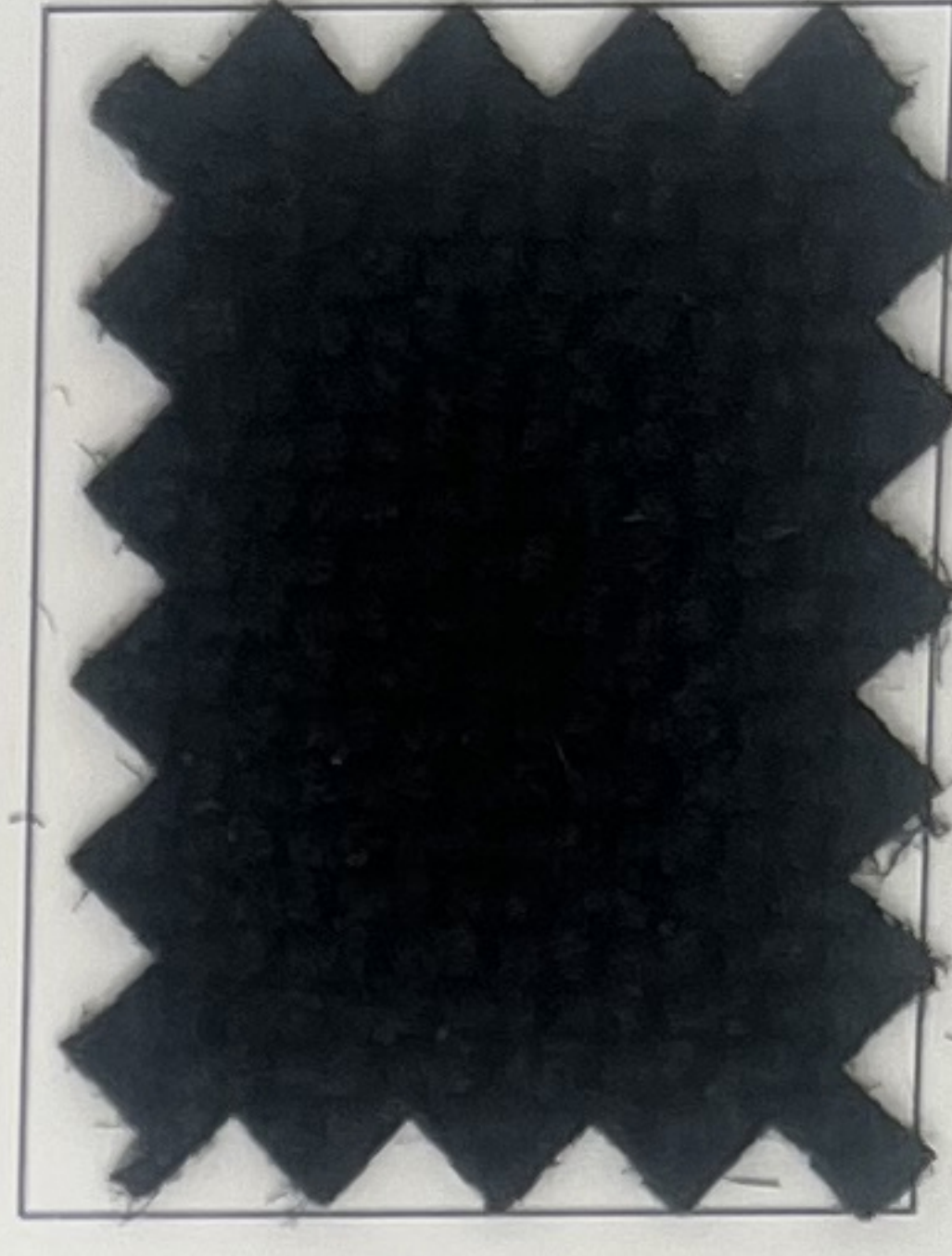
Slate



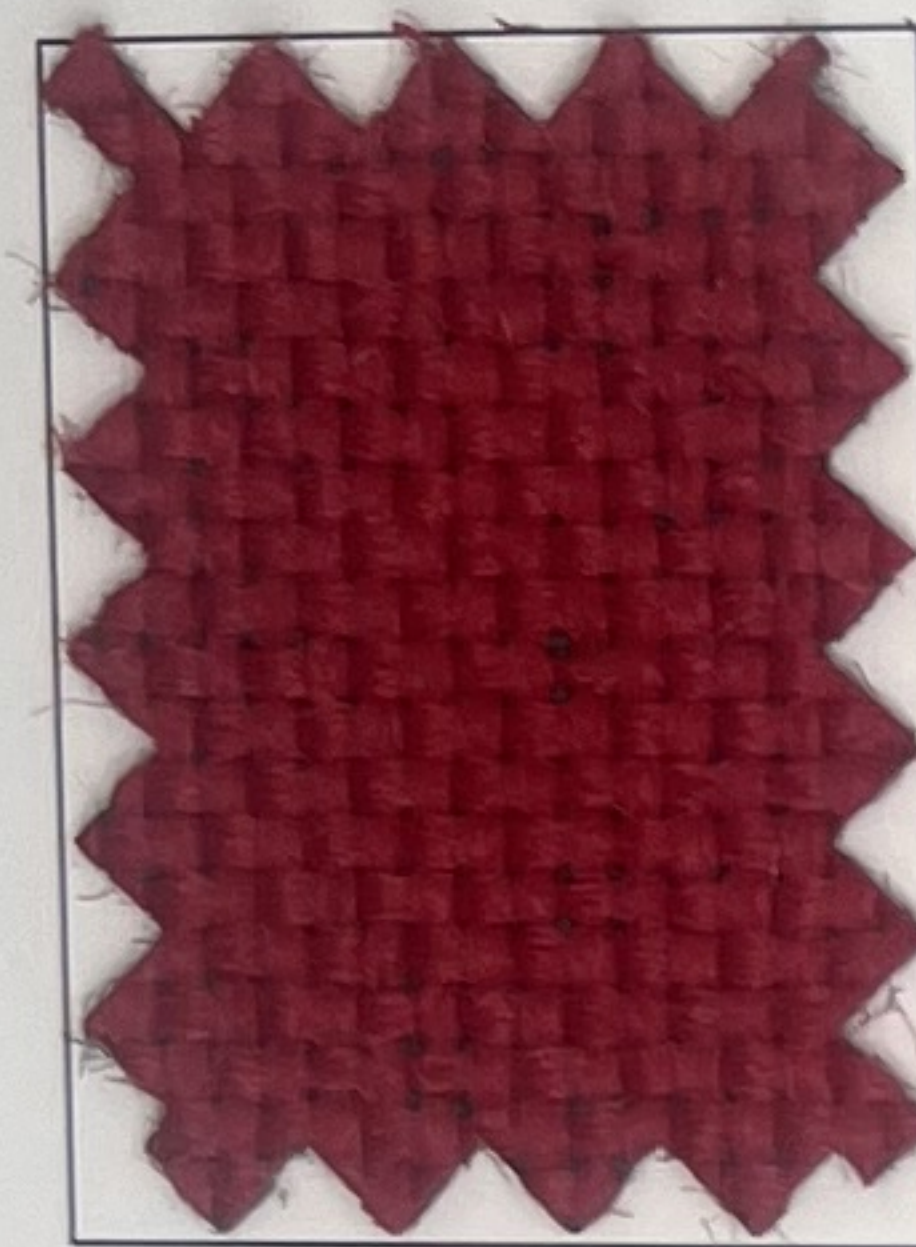
Granite



Coal



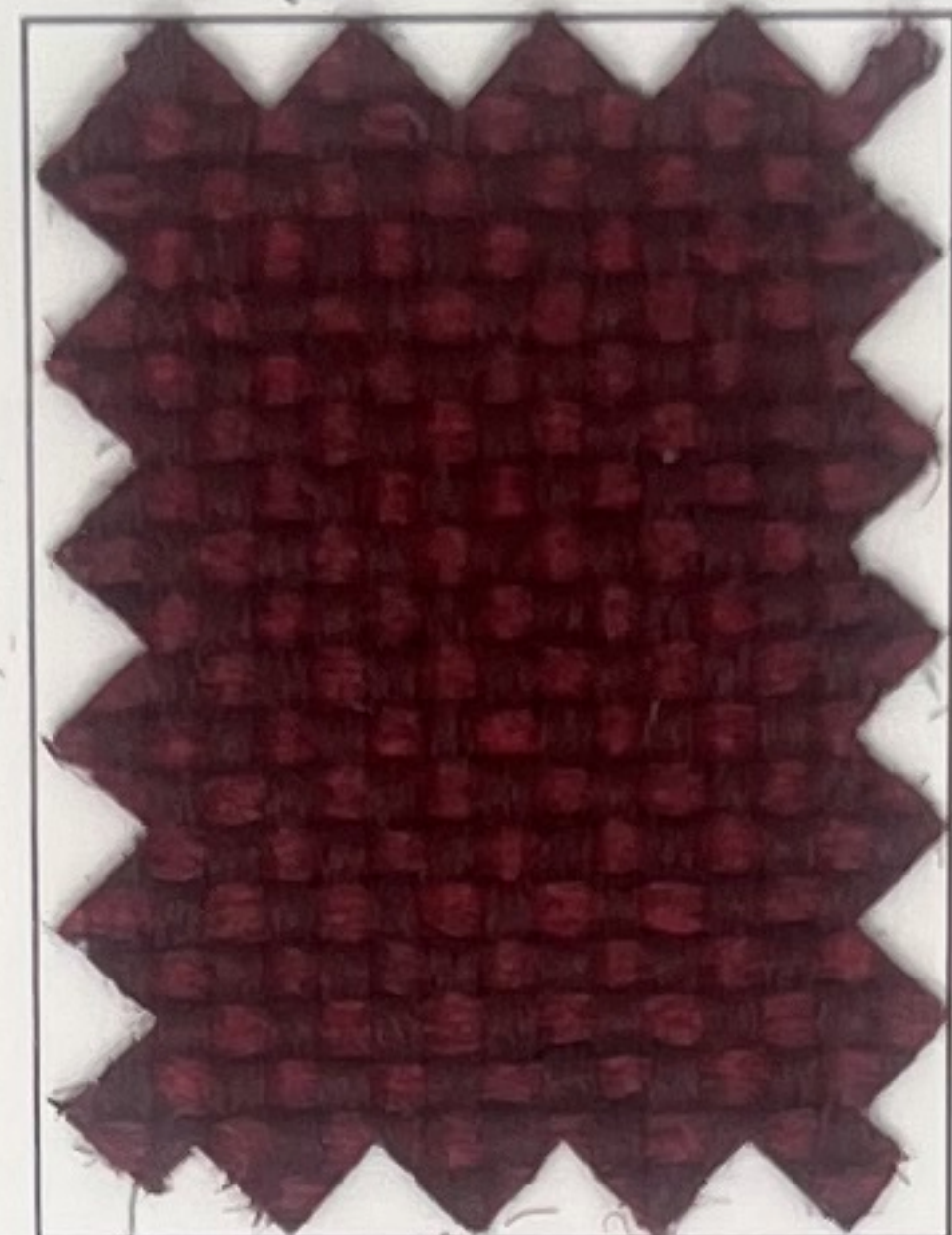
Black



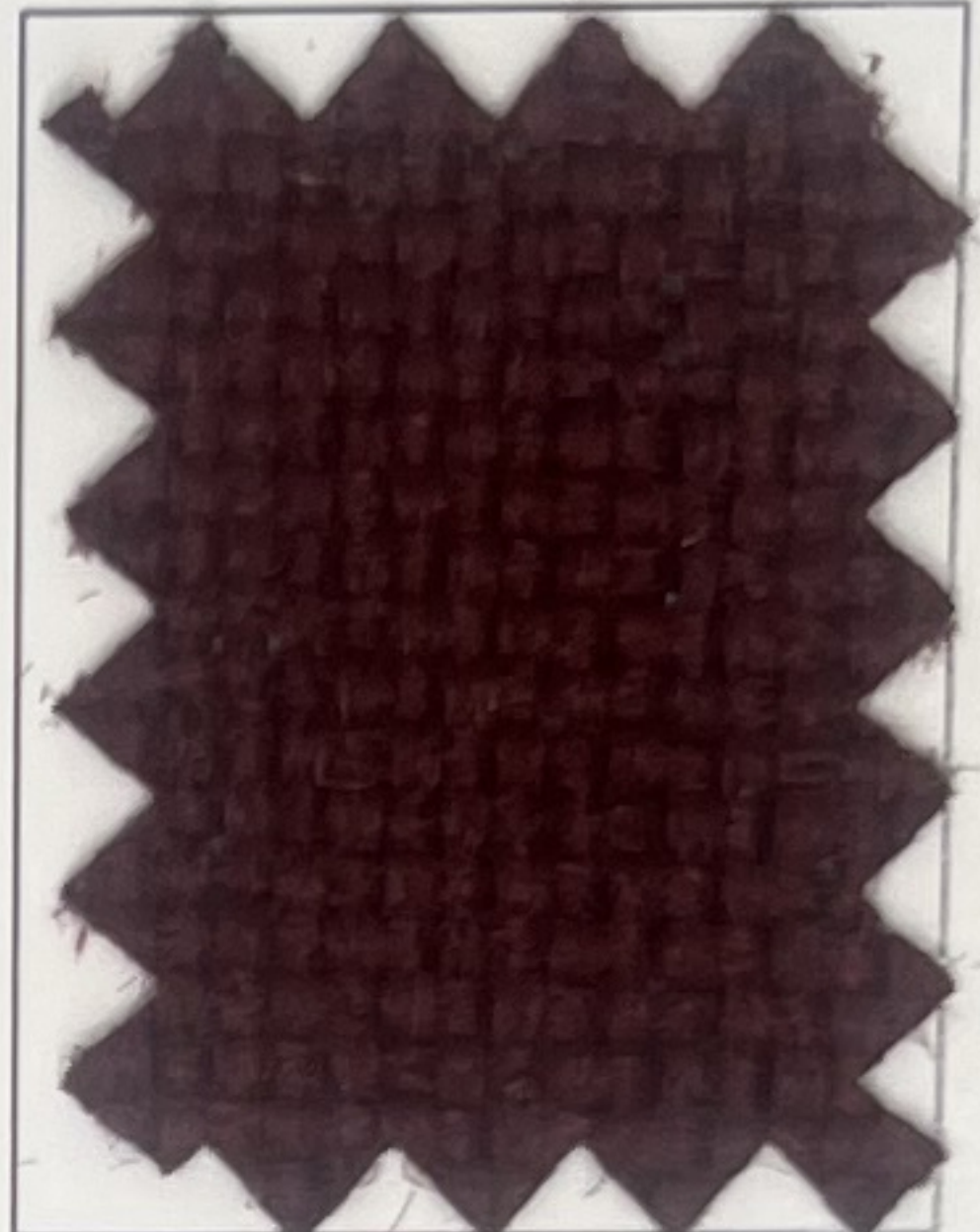
Scarlet



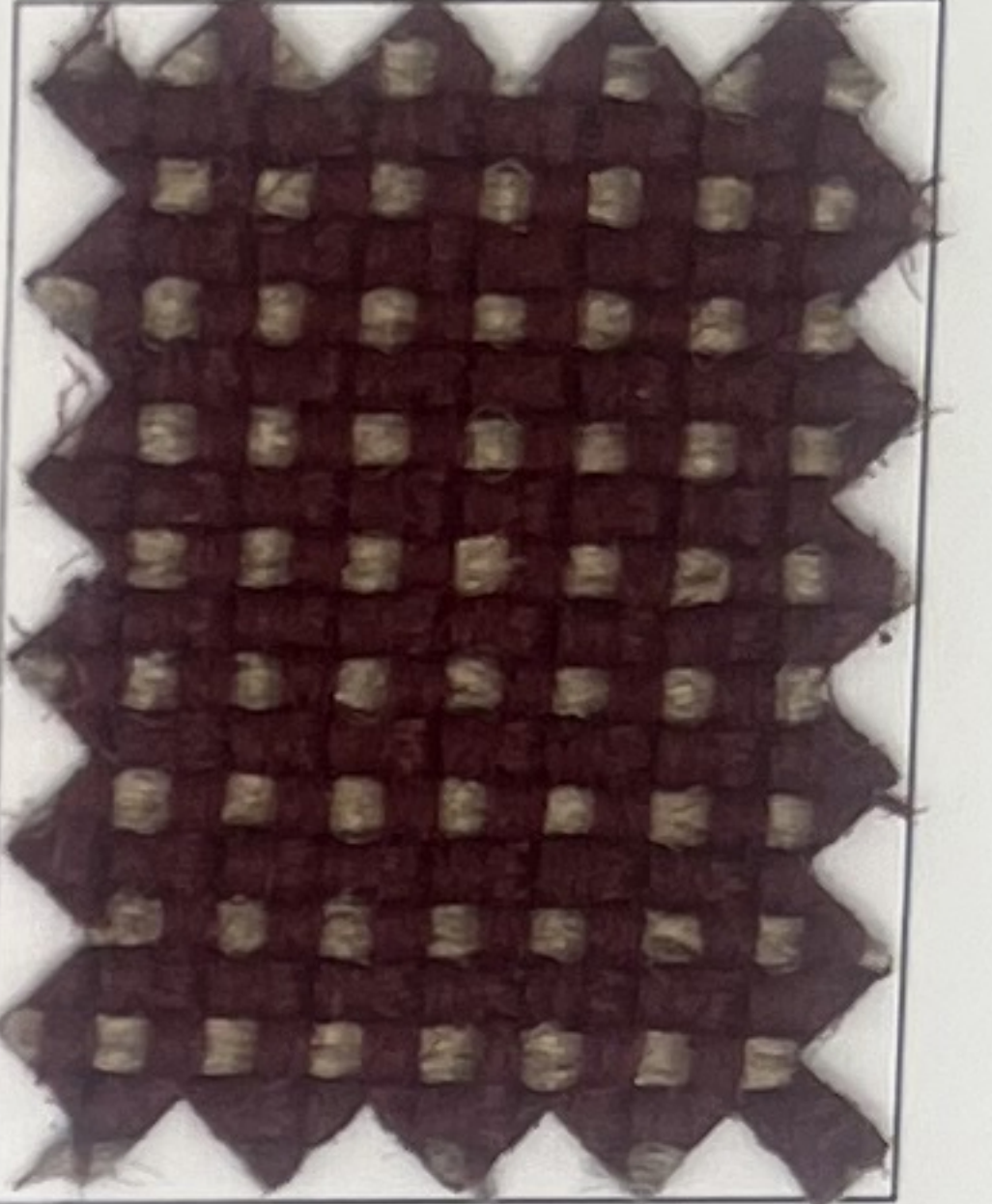
Brick



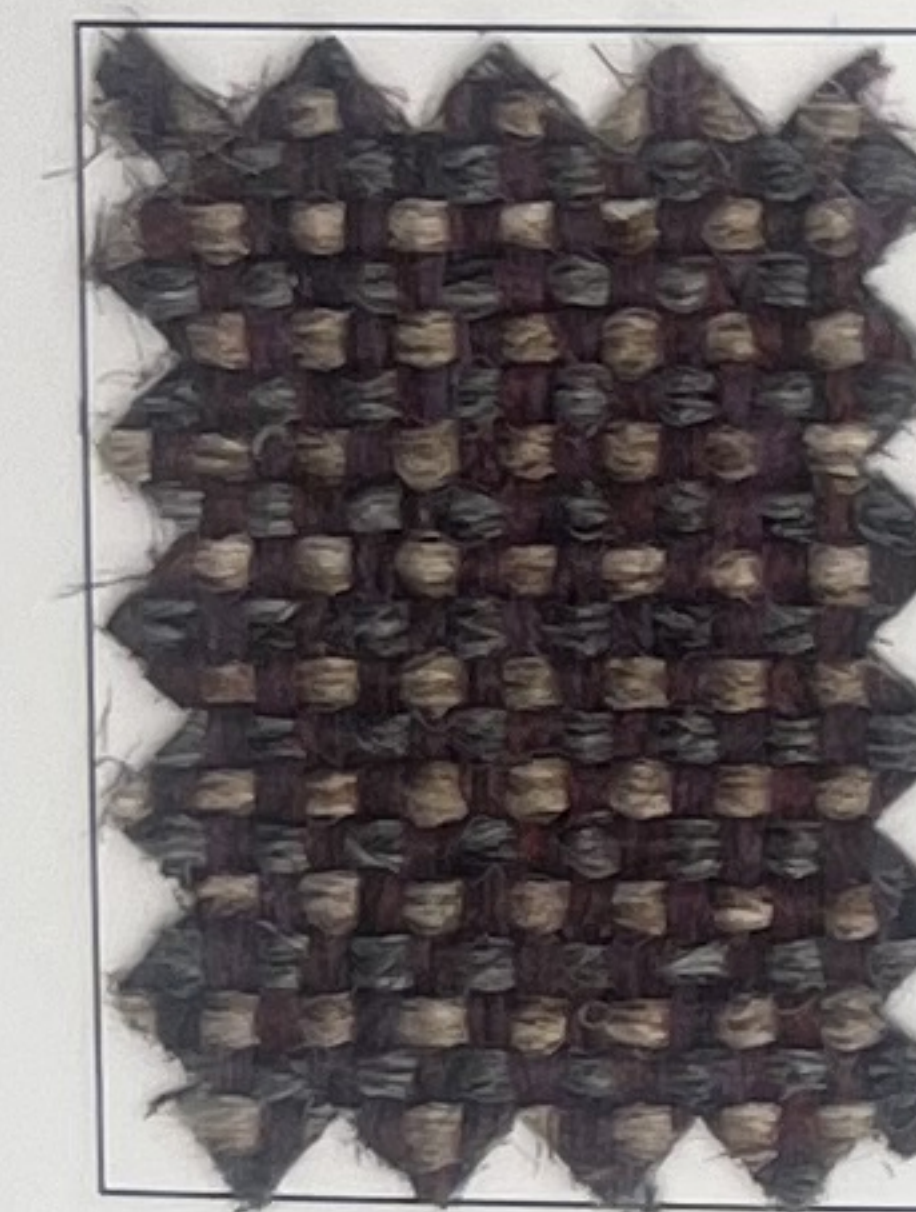
Claret



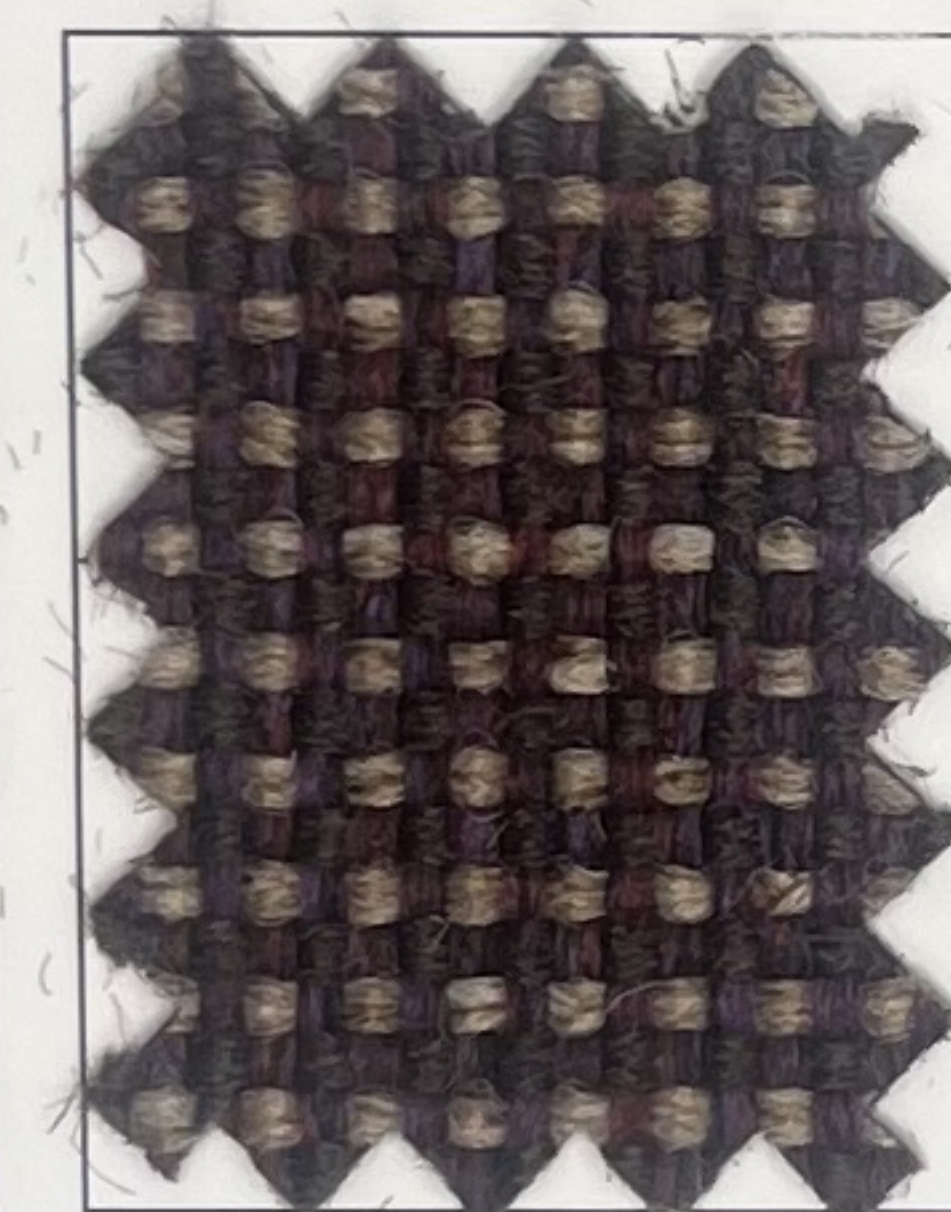
Maroon



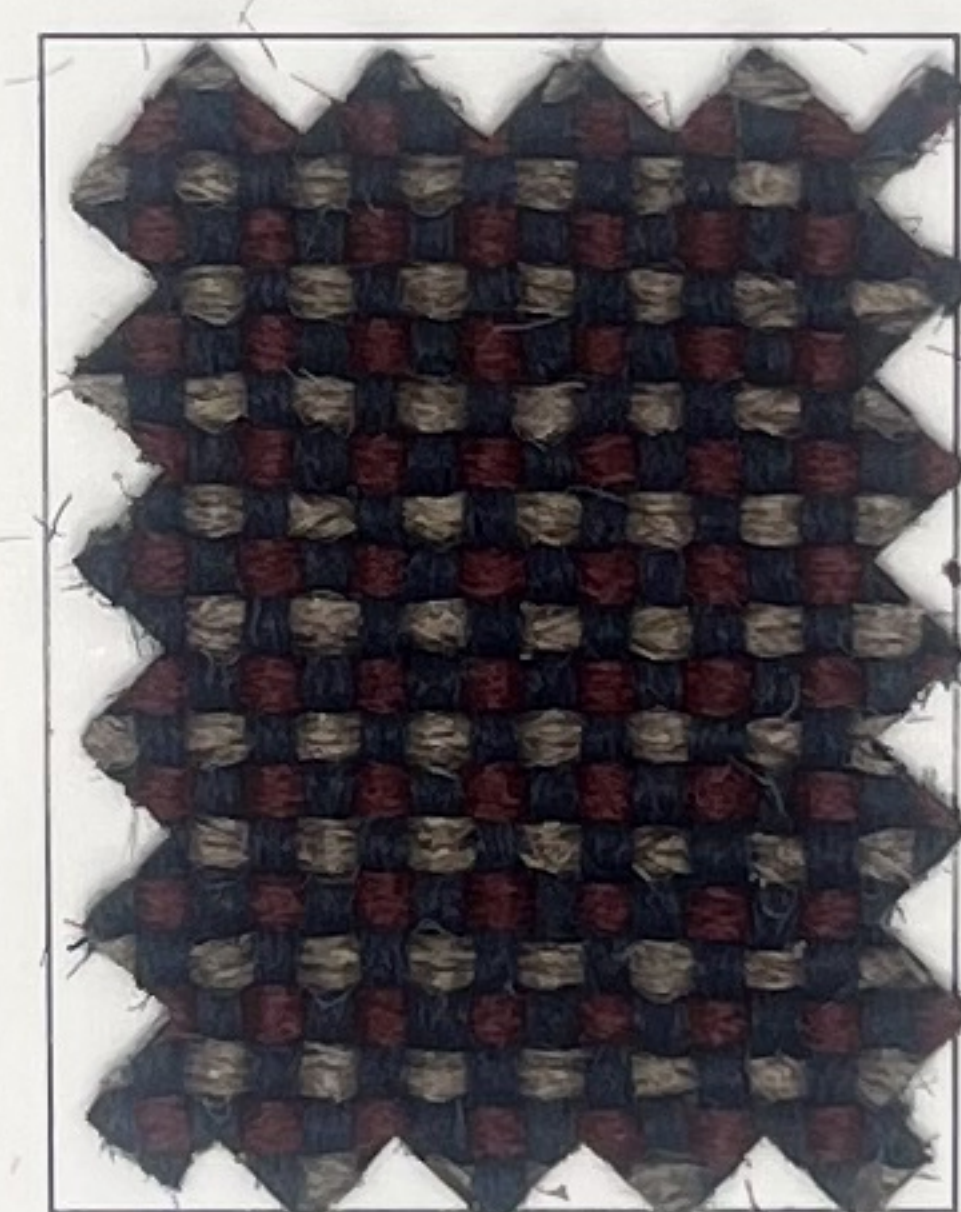
Holly



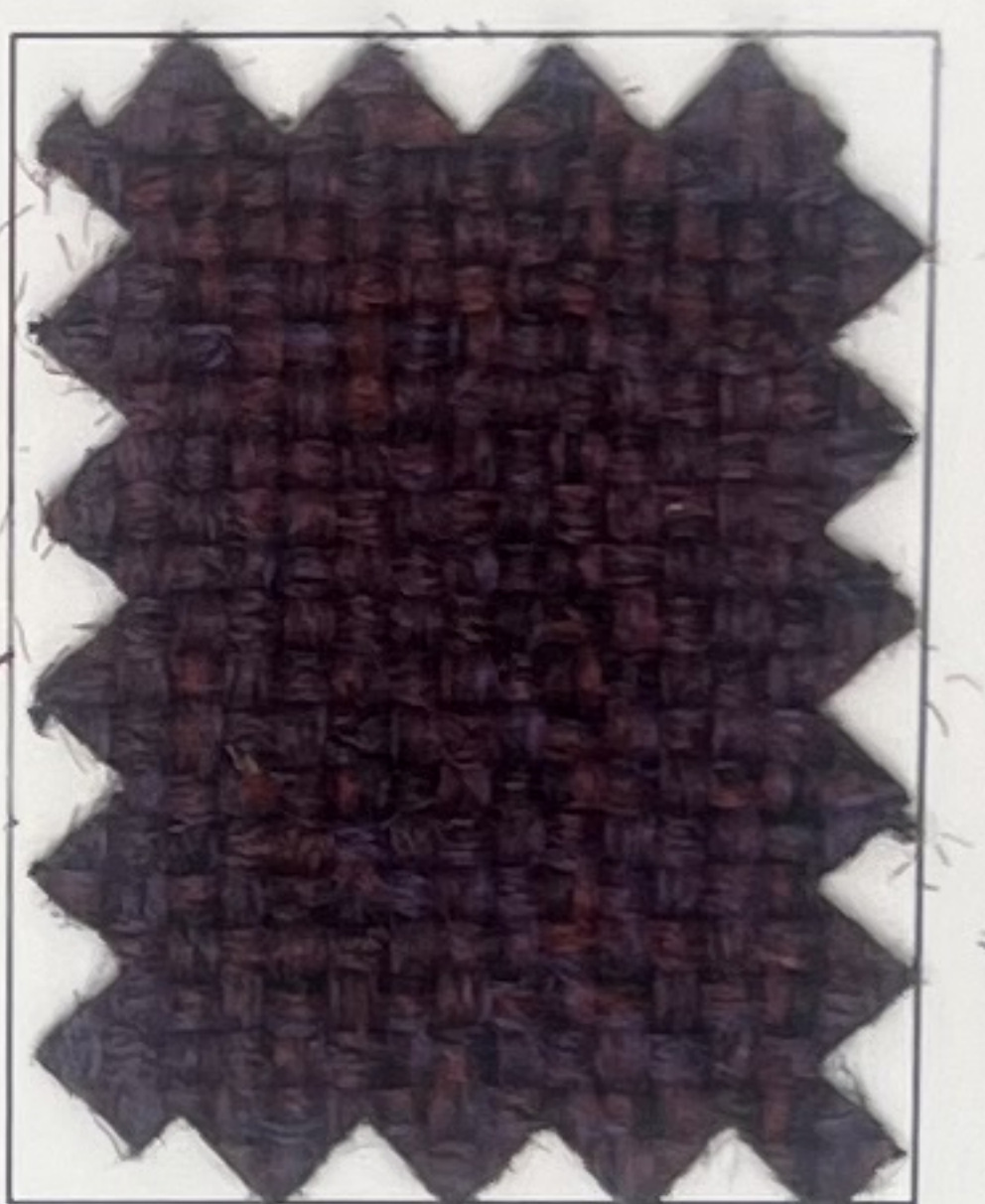
Angelina



Meritage



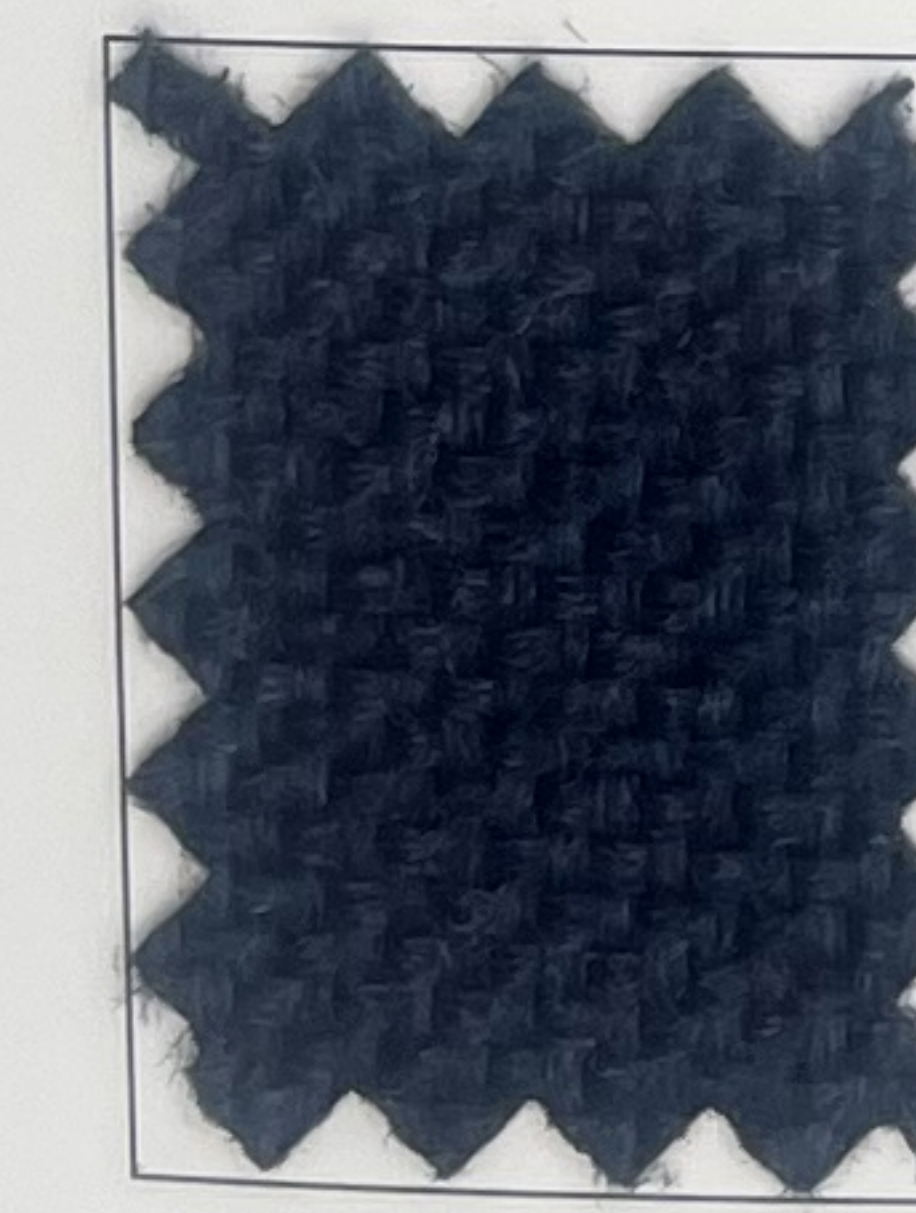
Cadet



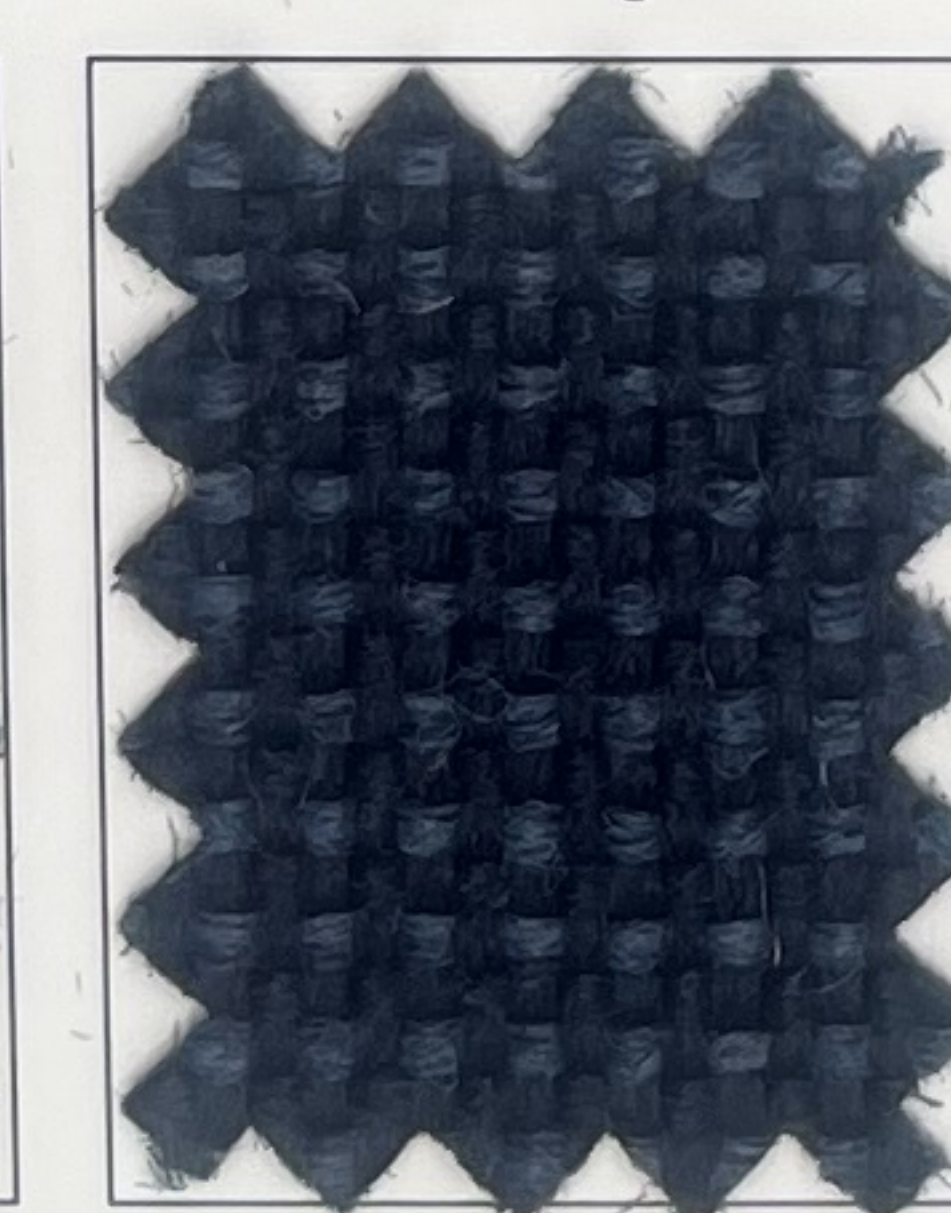
Amethyst



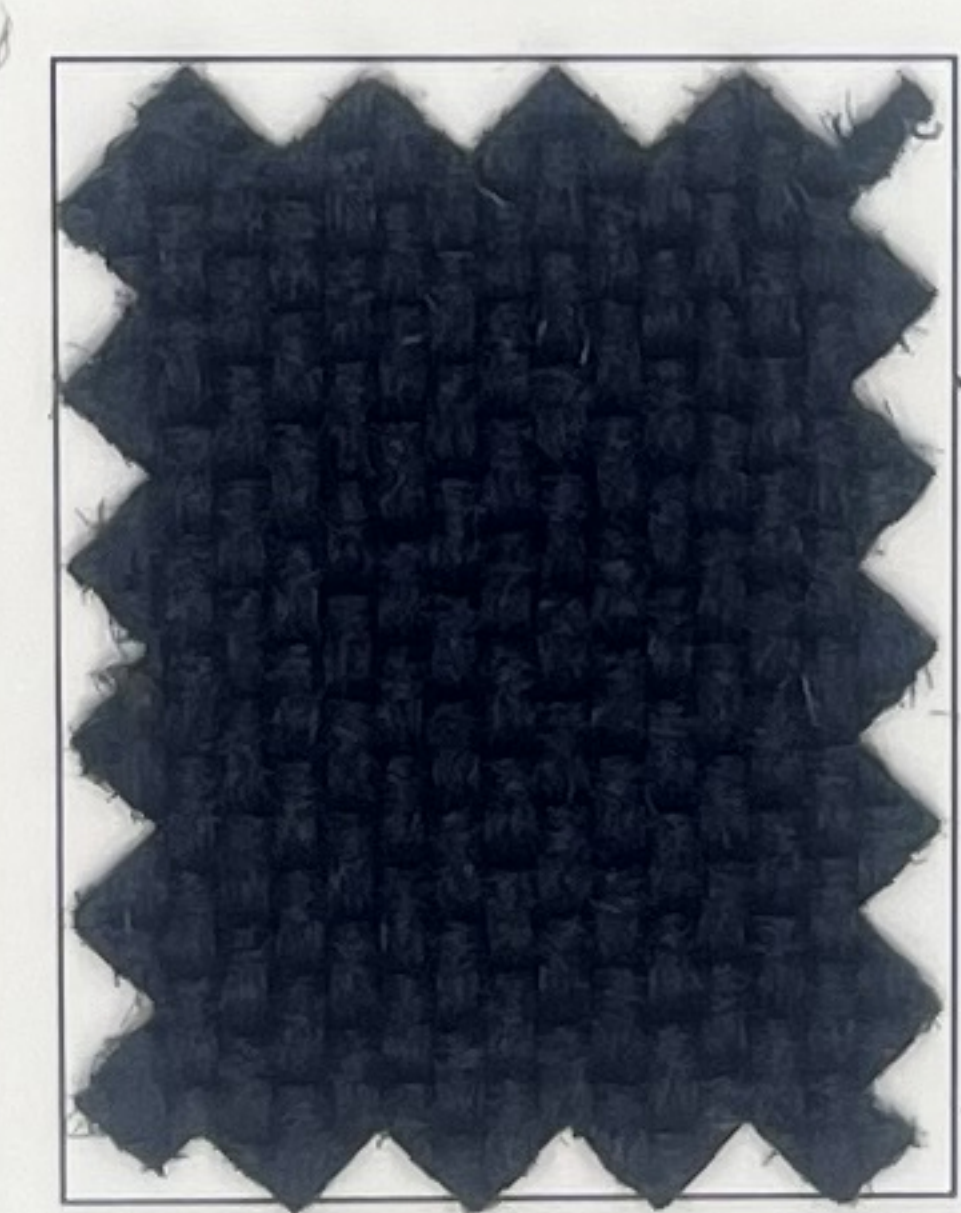
Lilac



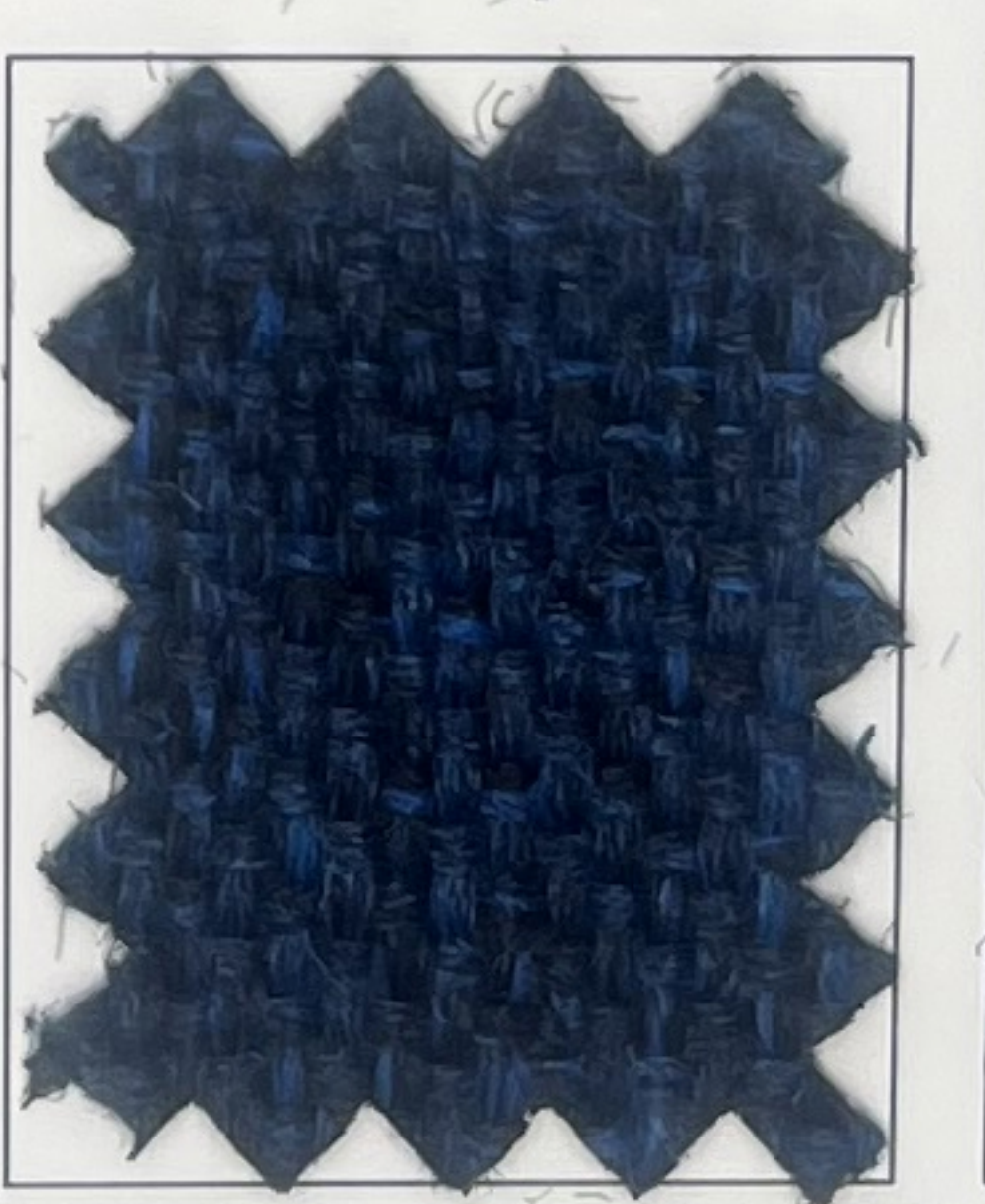
Lapis



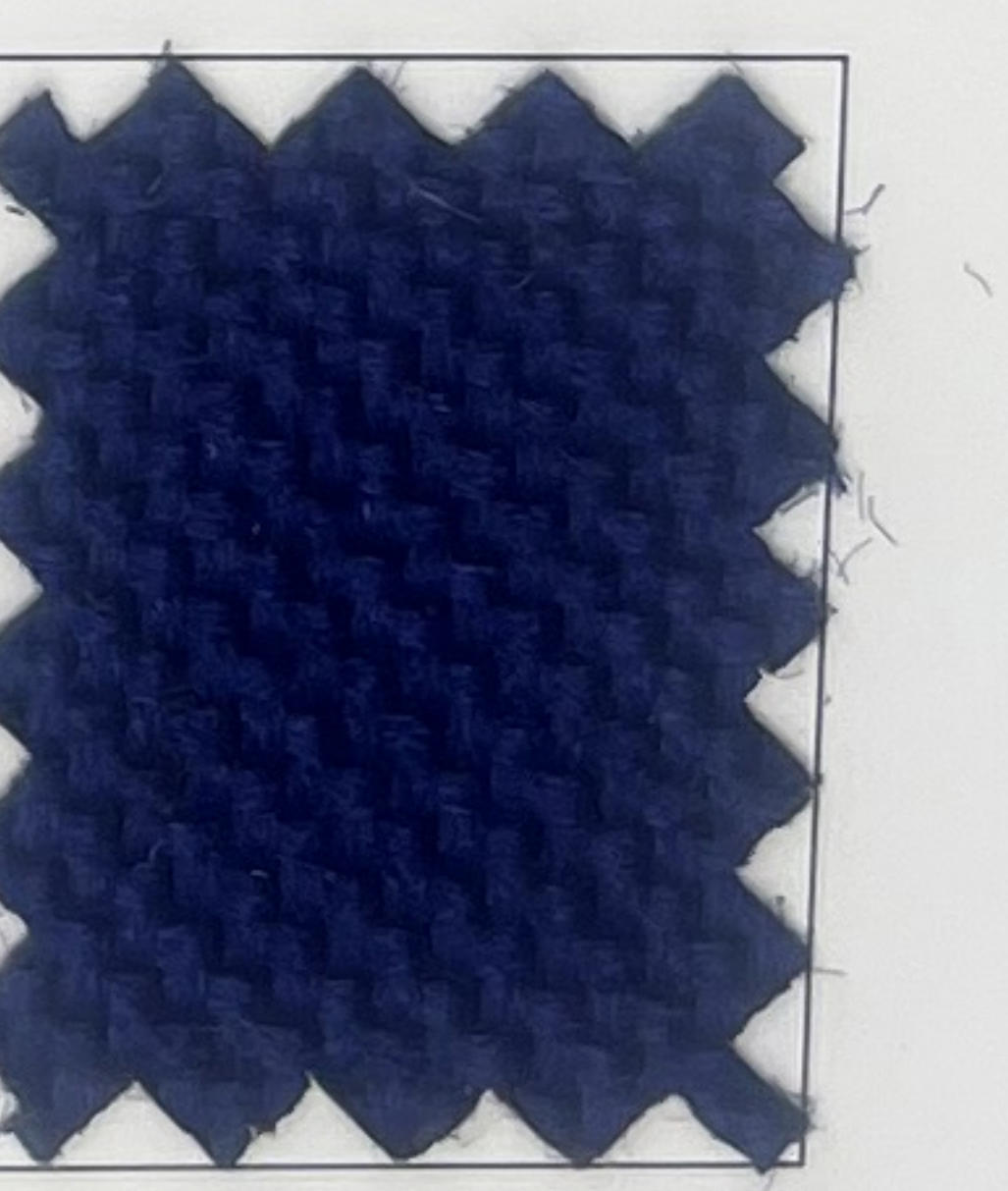
Liberty



Indigo



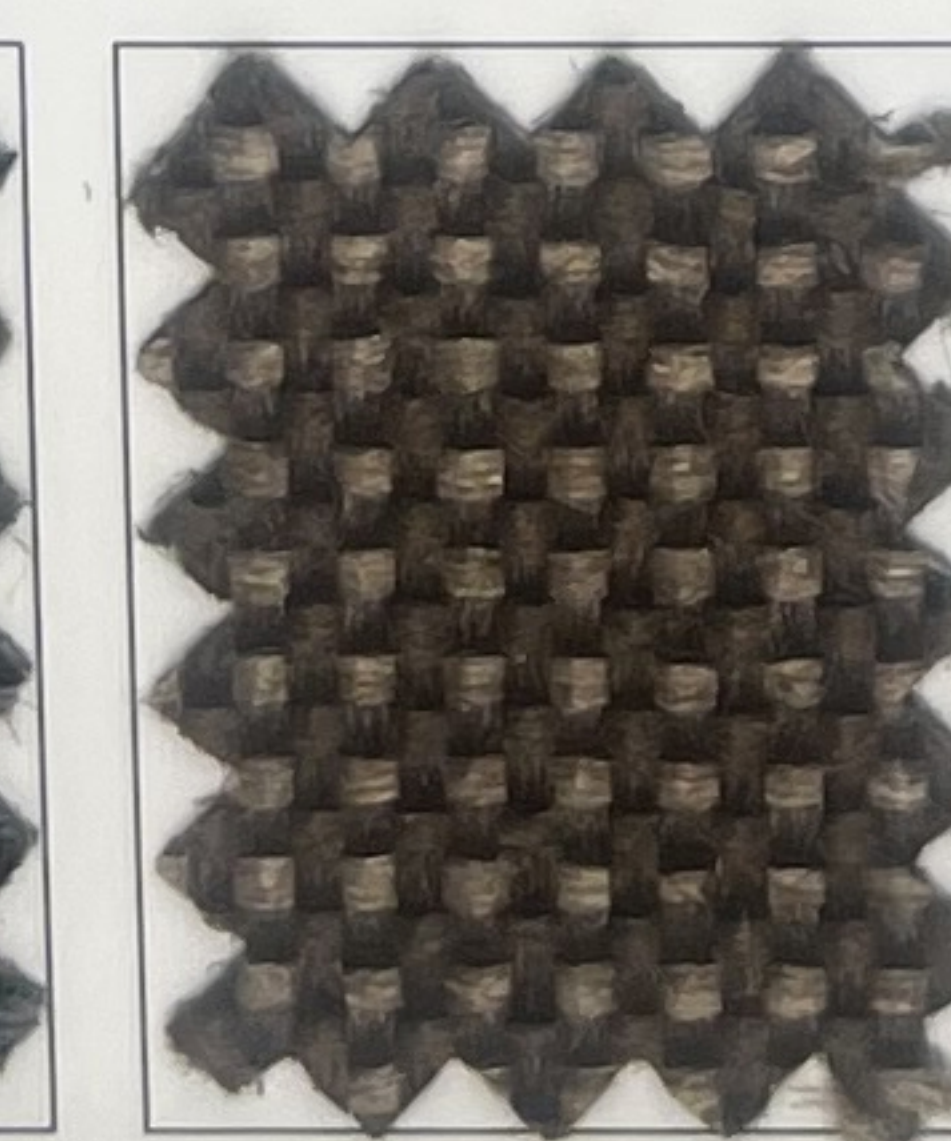
Dark Blue



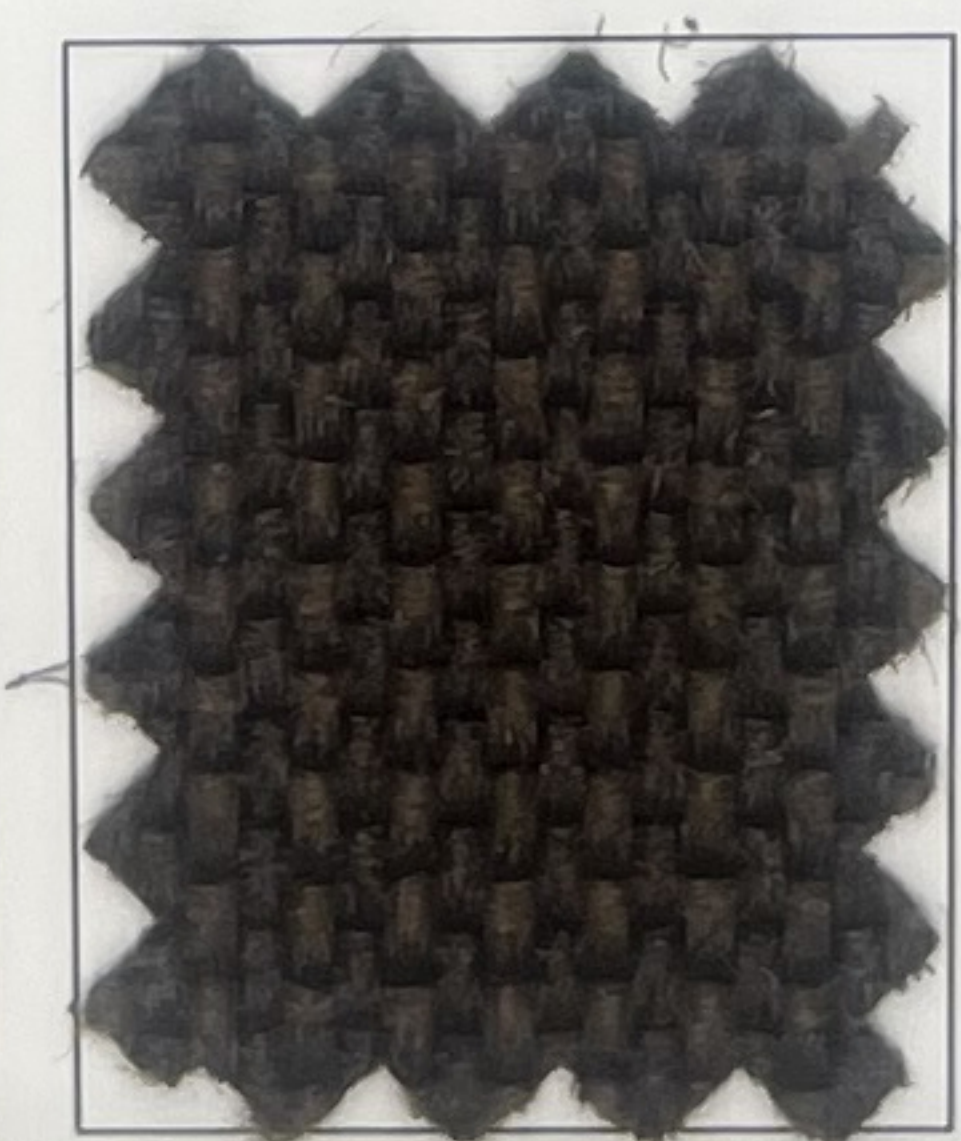
Capri



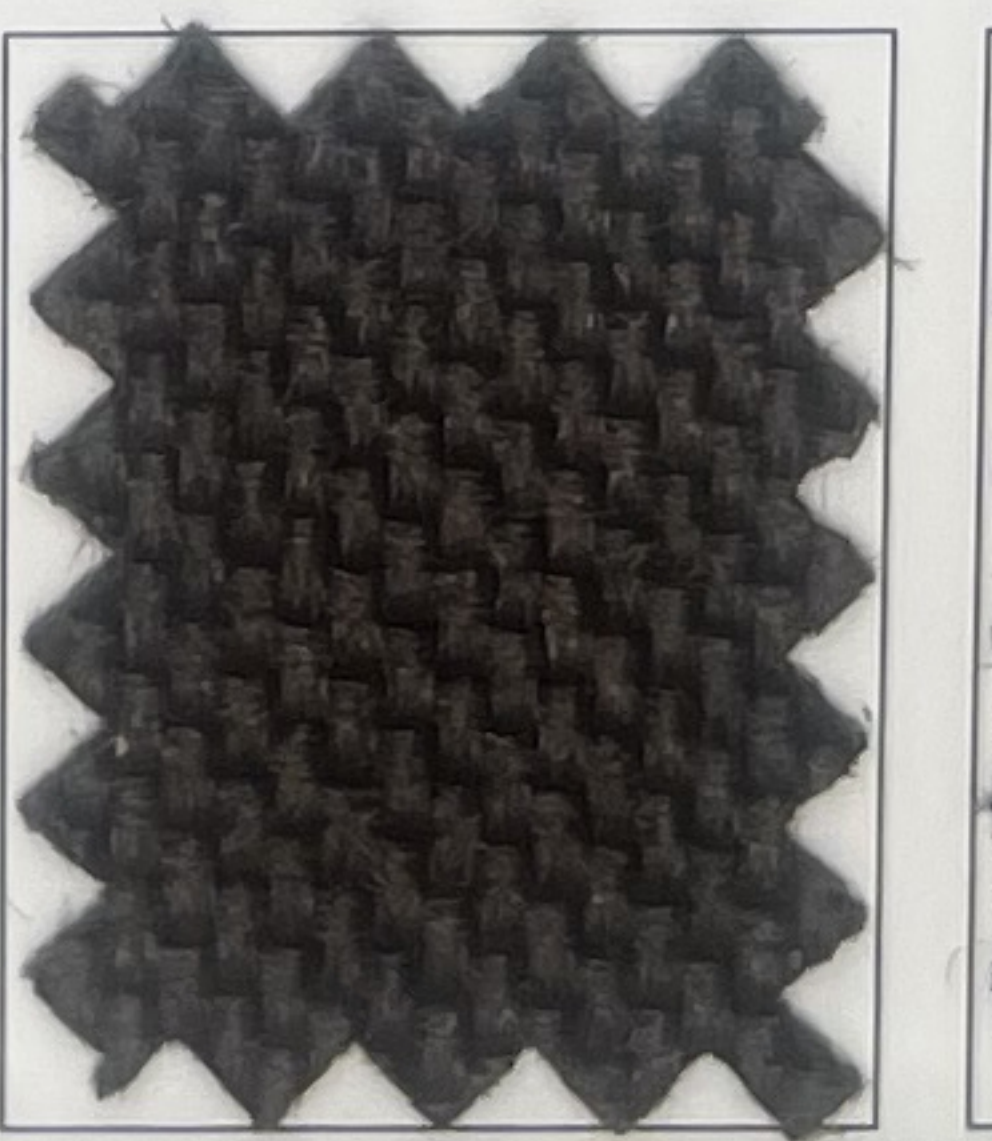
Pebble



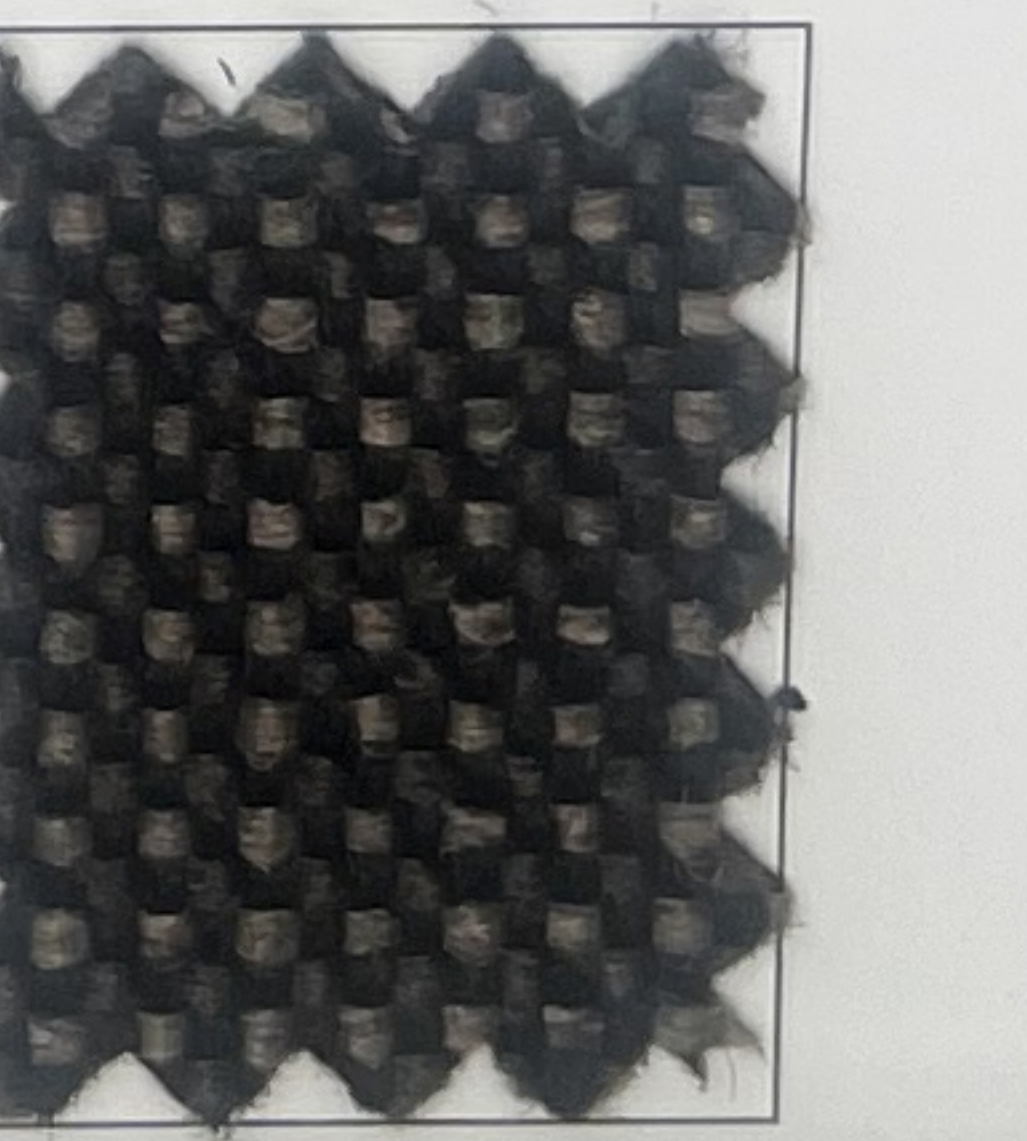
Mocha



Chocolate



Brown



Sable

INTERWEAVE®

Specifications

CONTENT	100% Polyolefin	COLORFASTNESS	AATCC-8 Wet – Class 4.5 Dry – Class 5
WEIGHT	18.0 ± 0.5 oz per Linear Yard	FLAMMABILITY	Cal 117-2013
WIDTH	54 inches	CLEANING CODE	WS – water based cleaning agents
ABRASION	ASTM-D-4157 250,000 + DR	PATTERN DIRECTION	Non-Directional
LIGHTFASTNESS	AATCC-16E 400 Hours, Class	FINISH	Imperviseal
STRENGTH RETENTION	ASTM D 5034 400 Hours, Xenon Arc. Exceeds 50% strength retention	BACKING	Acrylic

Interweave® is covered by a 10-year limited performance warranty for contract applications and a 2-year limited warranty for transportation

SUGGESTED APPLICATIONS

- OFFICE
- HEALTHCARE
- HOSPITALITY
- SCHOOL
- WORSHIP
- THEATRE

Tahoe's commitment to environmental responsibility is reflected by our beautiful, sustainable fabrics and efficient technical processes. The relationship between our manufacturing facility, the community and nature insure that we leave as little waste as possible for present and future generations. We strive to protect our environment and wildlife for future generations to enjoy. One hundred percent of our raw materials and loom waste are recyclable, which leaves very little waste in our manufacturing process. Tahoe uses only U.S. manufactured polyester, olefin and cotton yarns which result in our "no waste" products. Along with our yarns, our chemicals and latex are all environmentally safe. Our goal is to concentrate more on weave structures which can lessen the need for chemical treatments.



404 Elm Road
Blacksburg, SC 29702
704-476-0120 P
864-936-3228 F
customerservice@tahoellc.com